

Air Operations Map

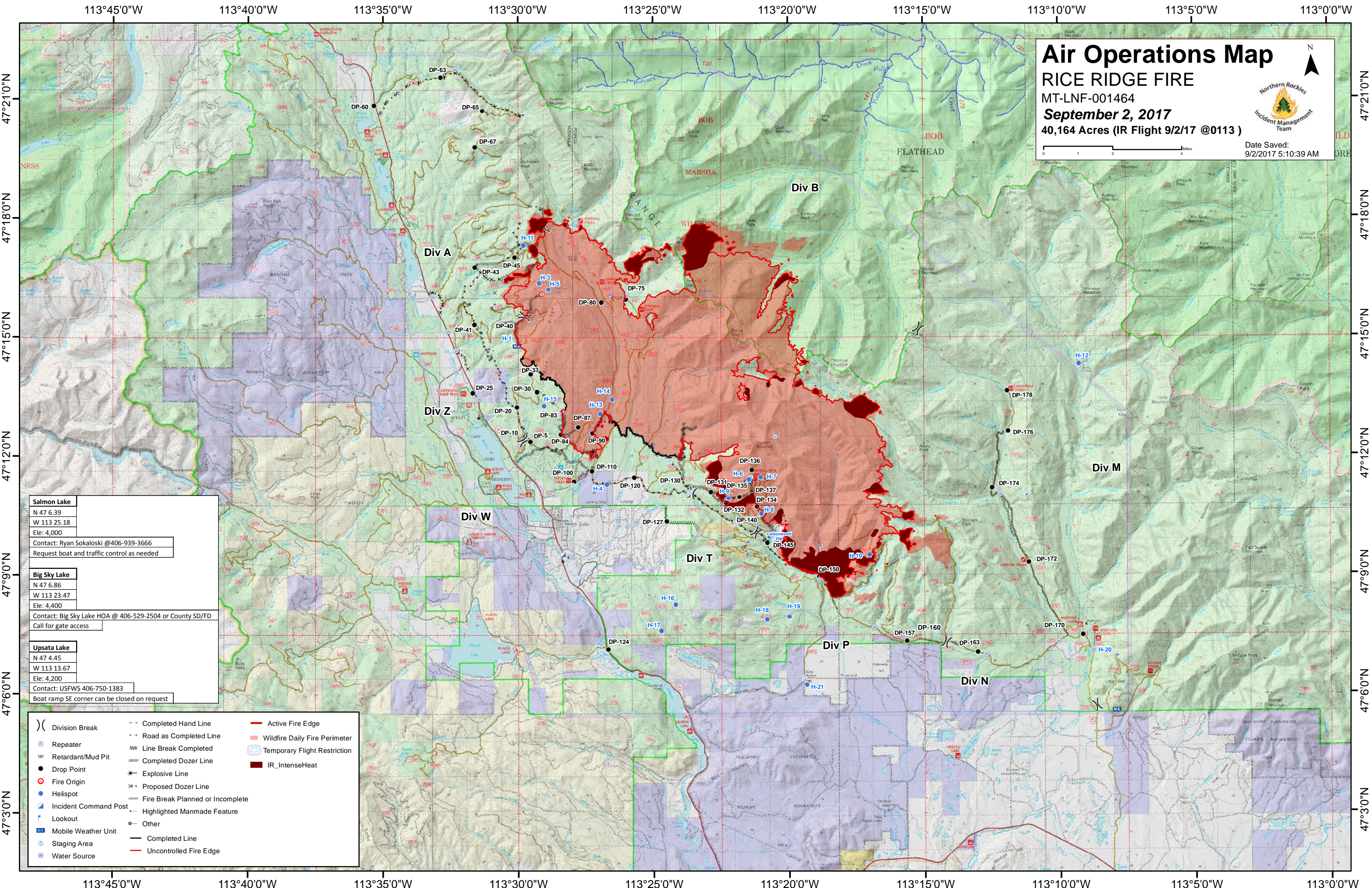
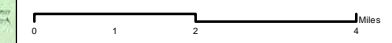
RICE RIDGE FIRE

MT-LNF-001464

September 2, 2017

40,164 Acres (IR Flight 9/2/17 @0113)

Date Saved:
9/2/2017 5:10:39 AM



Salmon Lake
N 47 6.39
W 113 25.18
Ele: 4,000
Contact: Ryan Sokaloski @406-939-3666
Request boat and traffic control as needed

Big Sky Lake
N 47 6.86
W 113 23.47
Ele: 4,400
Contact: Big Sky Lake HOA @ 406-529-2504 or County SD/FD
Call for gate access

Upsata Lake
N 47 4.45
W 113 13.67
Ele: 4,200
Contact: USFWS 406-750-1383
Boat ramp SE corner can be closed on request

- | | | |
|-------------------------|--------------------------------------|-----------------------------------|
| () Division Break | --- Completed Hand Line | — Active Fire Edge |
| Ⓡ Repeater | --- Road as Completed Line | --- Wildfire Daily Fire Perimeter |
| Ⓡ Retardant/Mud Pit | --- Line Break Completed | Ⓡ Temporary Flight Restriction |
| ● Drop Point | --- Completed Dozer Line | ■ IR_IntenseHeat |
| Ⓡ Fire Origin | --- Explosive Line | |
| Ⓡ Helispot | --- Proposed Dozer Line | |
| Ⓡ Incident Command Post | --- Fire Break Planned or Incomplete | |
| Ⓡ Lookout | --- Highlighted Manmade Feature | |
| Ⓡ Mobile Weather Unit | ○ Other | |
| Ⓡ Staging Area | — Completed Line | |
| Ⓡ Water Source | — Uncontrolled Fire Edge | |