

Air Operations Map

RICE RIDGE FIRE

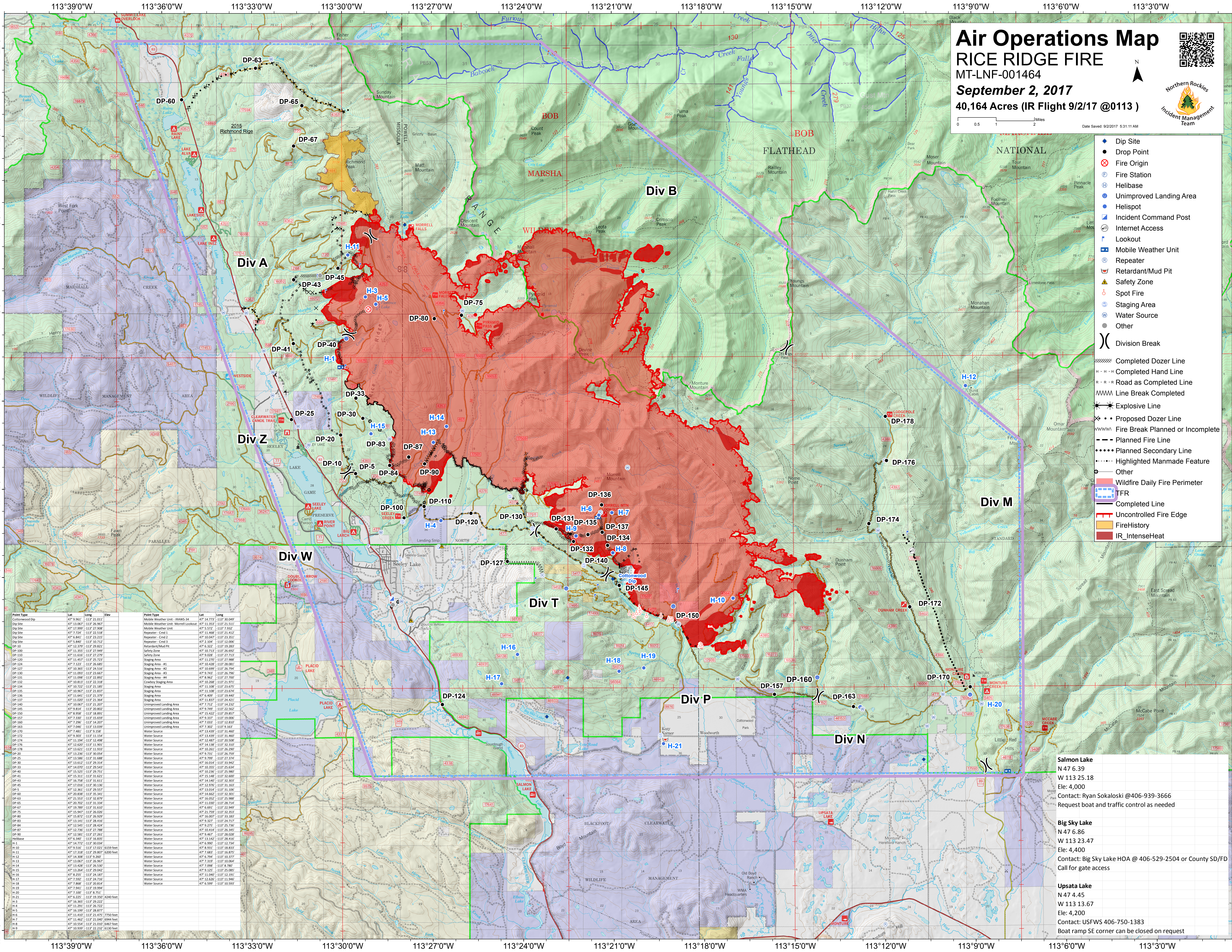
MT-LNF-001464

September 2, 2017

40,164 Acres (IR Flight 9/2/17 @0113)



0 0.5 1 2 Miles
Date Saved: 9/2/17 5:31:11 AM



- Dip Site
- Drop Point
- ⊗ Fire Origin
- Ⓜ Fire Station
- Ⓜ Helibase
- Ⓜ Unimproved Landing Area
- Ⓜ Helispot
- Ⓜ Incident Command Post
- Ⓜ Internet Access
- Ⓜ Lookout
- Ⓜ Mobile Weather Unit
- Ⓜ Repeater
- Ⓜ Retardant/Mud Pit
- Ⓜ Safety Zone
- Ⓜ Spot Fire
- Ⓜ Staging Area
- Ⓜ Water Source
- Other
- Ⓜ Division Break
- Ⓜ Completed Dozer Line
- Ⓜ Completed Hand Line
- Ⓜ Road as Completed Line
- Ⓜ Line Break Completed
- Ⓜ Explosive Line
- Ⓜ Proposed Dozer Line
- Ⓜ Fire Break Planned or Incomplete
- Ⓜ Planned Fire Line
- Ⓜ Planned Secondary Line
- Ⓜ Highlighted Manmade Feature
- Ⓜ Other
- Ⓜ Wildfire Daily Fire Perimeter
- Ⓜ TFR
- Ⓜ Completed Line
- Ⓜ Uncontrolled Fire Edge
- Ⓜ Fire-History
- Ⓜ IR_IntenseHeat

Point Type	Lat	Long	Elev	Point Type	Lat	Long	Elev
Continuum Dip	47° 56.961	-113° 21.011		Mobile Weather Unit - IRAWS-14	47° 14.772	-113° 30.069	
Dip Site	47° 13.067	-113° 26.967		Mobile Weather Unit - Monrell Lookout	47° 11.353	-113° 21.511	
Dip Site	47° 12.999	-113° 27.968		Mobile Weather Unit	47° 5.727	-113° 27.968	
Dip Site	47° 7.724	-113° 23.535		Repeater - Cmd 1	47° 15.560	-113° 21.812	
Dip Site	47° 6.841	-113° 23.215		Repeater - Cmd 2	47° 10.047	-113° 23.215	
Dip Site	47° 6.840	-113° 23.712		Repeater - Cmd 3	47° 2.304	-113° 23.096	
DP-10	47° 12.379	-113° 29.283		Retardant/Mud Pit	47° 6.322	-113° 19.283	
DP-100	47° 11.350	-113° 27.949		Safety Zone	47° 10.713	-113° 26.962	
DP-110	47° 11.640	-113° 27.279		Staging Area	47° 9.608	-113° 27.717	
DP-120	47° 11.457	-113° 25.723		Staging Area #1	47° 11.770	-113° 27.968	
DP-124	47° 12.23	-113° 26.465		Staging Area #2	47° 10.420	-113° 26.841	
DP-127	47° 10.365	-113° 24.510		Staging Area #3	47° 10.699	-113° 26.794	
DP-130	47° 11.097	-113° 24.667		Staging Area #4	47° 9.743	-113° 26.796	
DP-131	47° 11.098	-113° 24.892		Cowboy Staging Area	47° 9.867	-113° 27.707	
DP-132	47° 10.813	-113° 23.318		Staging Area	47° 10.368	-113° 27.971	
DP-134	47° 10.727	-113° 21.185		Staging Area	47° 11.108	-113° 23.675	
DP-135	47° 10.967	-113° 21.837		Staging Area	47° 11.108	-113° 23.675	
DP-136	47° 11.641	-113° 21.879		Staging Area	47° 6.409	-113° 19.467	
DP-137	47° 11.097	-113° 21.364		Staging Area	47° 11.897	-113° 24.411	
DP-140	47° 10.067	-113° 21.807		Unimproved Landing Area	47° 7.712	-113° 14.212	
DP-145	47° 9.814	-113° 20.802		Unimproved Landing Area	47° 9.769	-113° 22.542	
DP-150	47° 11.658	-113° 18.892		Unimproved Landing Area	47° 14.422	-113° 24.817	
DP-157	47° 7.330	-113° 15.659		Unimproved Landing Area	47° 9.317	-113° 10.006	
DP-160	47° 7.296	-113° 14.207		Unimproved Landing Area	47° 7.583	-113° 12.810	
DP-163	47° 7.046	-113° 14.039		Unimproved Landing Area	47° 7.302	-113° 9.567	
DP-170	47° 7.481	-113° 9.138		Water Source	47° 13.439	-113° 31.467	
DP-172	47° 9.309	-113° 11.154		Water Source	47° 13.499	-113° 31.467	
DP-174	47° 11.194	-113° 12.498		Water Source	47° 12.487	-113° 20.508	
DP-176	47° 11.629	-113° 11.905		Water Source	47° 14.138	-113° 32.307	
DP-178	47° 11.624	-113° 11.913		Water Source	47° 10.911	-113° 24.913	
DP-20	47° 11.236	-113° 10.054		Water Source	47° 9.711	-113° 26.799	
DP-25	47° 11.298	-113° 11.688		Water Source	47° 9.769	-113° 12.810	
DP-30	47° 11.612	-113° 25.144		Water Source	47° 16.014	-113° 31.842	
DP-33	47° 14.070	-113° 29.543		Water Source	47° 10.353	-113° 25.844	
DP-40	47° 10.202	-113° 27.753		Water Source	47° 10.390	-113° 25.897	
DP-41	47° 15.311	-113° 31.621		Water Source	47° 15.148	-113° 32.600	
DP-43	47° 16.794	-113° 31.613		Water Source	47° 14.447	-113° 32.307	
DP-45	47° 13.361	-113° 31.386		Water Source	47° 12.976	-113° 31.847	
DP-5	47° 13.361	-113° 25.527		Water Source	47° 13.014	-113° 31.596	
DP-60	47° 10.388	-113° 12.442		Water Source	47° 14.467	-113° 32.307	
DP-63	47° 11.553	-113° 12.879		Water Source	47° 16.012	-113° 25.988	
DP-65	47° 10.707	-113° 11.334		Water Source	47° 11.007	-113° 28.714	
DP-67	47° 9.790	-113° 11.010		Water Source	47° 4.493	-113° 23.897	
DP-75	47° 15.947	-113° 26.026		Water Source	47° 21.797	-113° 32.313	
DP-80	47° 15.877	-113° 26.929		Water Source	47° 16.007	-113° 31.847	
DP-83	47° 11.641	-113° 24.416		Water Source	47° 9.767	-113° 24.117	
DP-84	47° 11.540	-113° 28.424		Water Source	47° 9.775	-113° 25.790	
DP-87	47° 11.780	-113° 27.788		Water Source	47° 10.144	-113° 26.145	
DP-90	47° 11.581	-113° 27.261		Water Source	47° 9.467	-113° 28.028	
Helibase	47° 6.340	-113° 16.835		Water Source	47° 11.142	-113° 28.416	
H-1	47° 6.772	-113° 30.034		Water Source	47° 6.497	-113° 11.144	
H-3	47° 9.516	-113° 17.021	6159 feet	Water Source	47° 8.911	-113° 18.813	
H-5	47° 17.318	-113° 20.807	6200 feet	Water Source	47° 7.683	-113° 16.875	
H-11	47° 6.340	-113° 16.262		Water Source	47° 6.764	-113° 10.372	
H-13	47° 13.067	-113° 26.967		Water Source	47° 7.319	-113° 10.064	
H-14	47° 12.428	-113° 21.590		Water Source	47° 7.288	-113° 9.787	
H-15	47° 11.254	-113° 20.042		Water Source	47° 9.125	-113° 25.085	
H-16	47° 6.255	-113° 24.877		Water Source	47° 11.047	-113° 12.591	
H-17	47° 1.982	-113° 24.716		Water Source	47° 12.430	-113° 18.986	
H-18	47° 7.868	-113° 20.814		Water Source	47° 6.599	-113° 10.593	
H-19	47° 7.941	-113° 19.994					
H-20	47° 6.392	-113° 19.350	4240 feet				
H-21	47° 16.362	-113° 22.222					
H-2	47° 16.399	-113° 28.877					
H-4	47° 11.412	-113° 21.475	7750 feet				
H-6	47° 11.462	-113° 21.040	6984 feet				
H-7	47° 10.554	-113° 21.010	6461 feet				
H-8	47° 10.939	-113° 22.212	6130 feet				

Salmon Lake
N 47 6.39
W 113 25.18
Elev: 4,000
Contact: Ryan Sokaloski @406-939-3666
Request boat and traffic control as needed

Big Sky Lake
N 47 6.86
W 113 23.47
Elev: 4,400
Contact: Big Sky Lake HOA @ 406-529-2504 or County SD/FD
Call for gate access

Upsata Lake
N 47 4.45
W 113 13.67
Elev: 4,200
Contact: USFWS 406-750-1383
Boat ramp SE corner can be closed on request