

Briefing Map

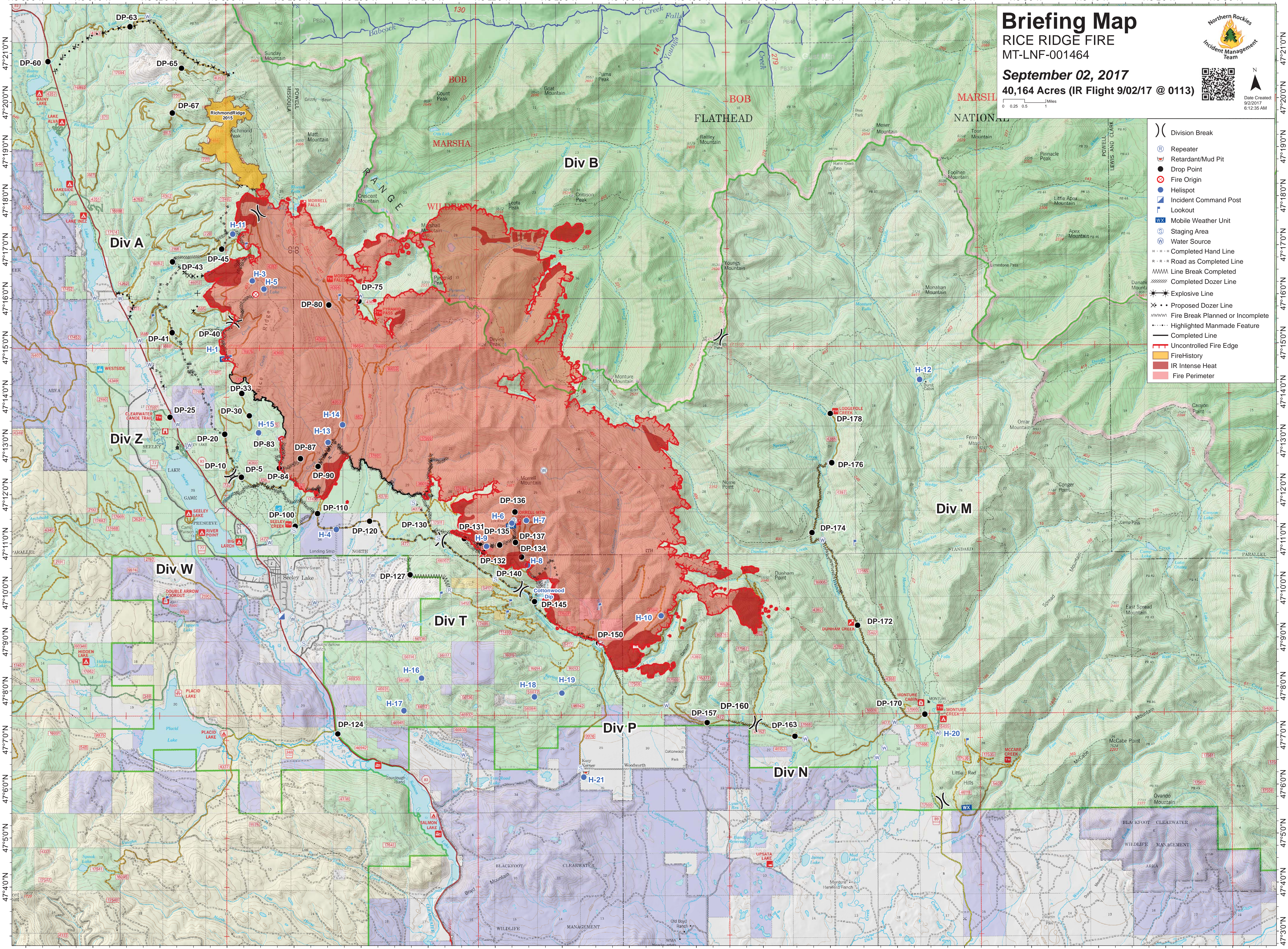
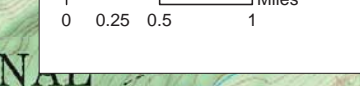
RICE RIDGE FIRE
MT-LNF-001464

September 02, 2017

40,164 Acres (IR Flight 9/02/17 @ 0113)



Date Created:
9/2/2017
6:12:35 AM



- () Division Break
- Ⓡ Repeater
- Ⓡ Retardant/Mud Pit
- Drop Point
- ⦿ Fire Origin
- ⊙ Helispot
- Ⓜ Incident Command Post
- Ⓜ Lookout
- Ⓜ Mobile Weather Unit
- Ⓜ Staging Area
- Ⓜ Water Source
- Ⓜ Completed Hand Line
- Ⓜ Road as Completed Line
- Ⓜ Line Break Completed
- Ⓜ Completed Dozer Line
- Ⓜ Explosive Line
- Ⓜ Proposed Dozer Line
- Ⓜ Fire Break Planned or Incomplete
- Ⓜ Highlighted Manmade Feature
- Ⓜ Completed Line
- Ⓜ Uncontrolled Fire Edge
- Ⓜ Fire History
- Ⓜ IR Intense Heat
- Ⓜ Fire Perimeter