

# Operations Map

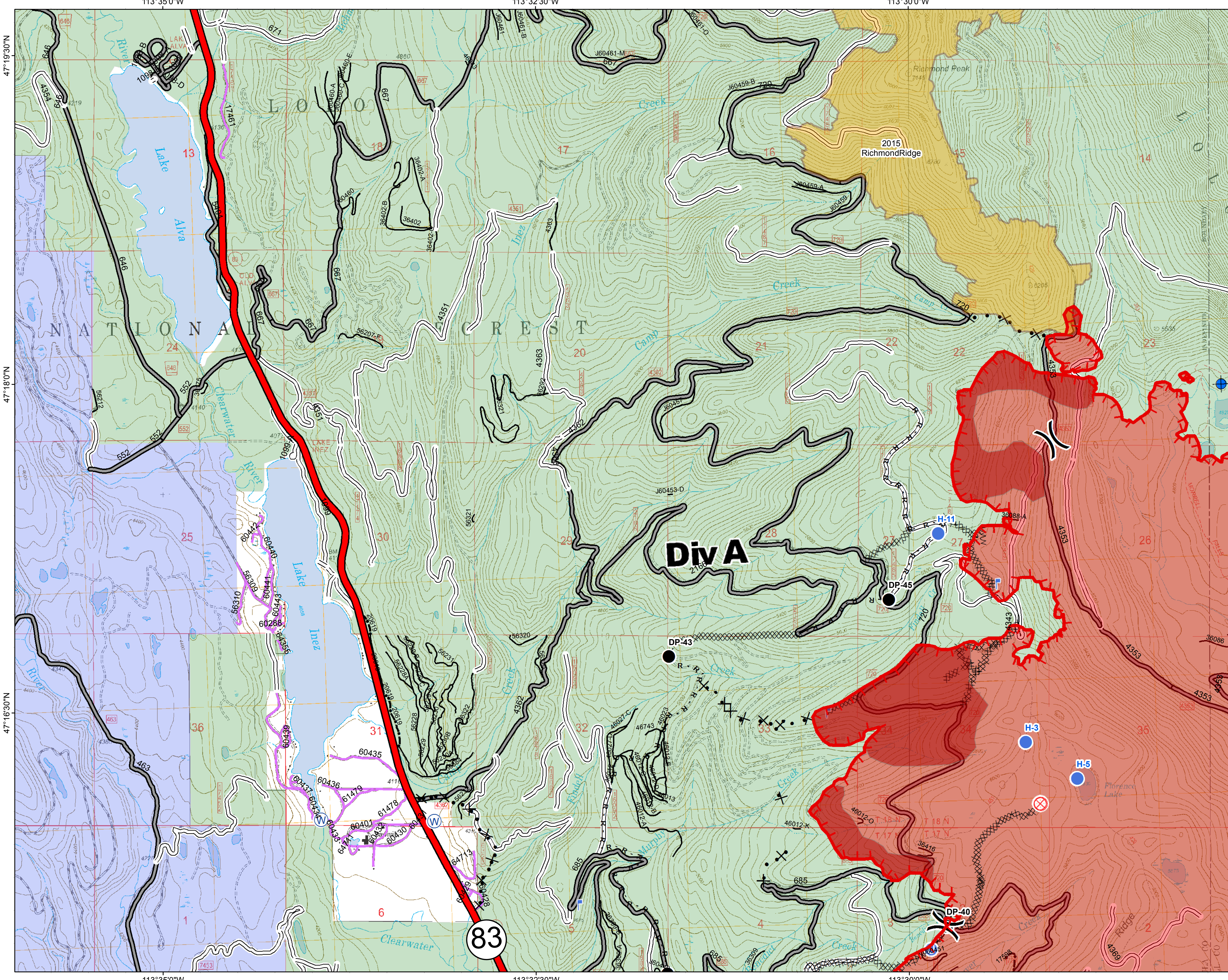
## DIV A

### Rice Ridge Fire

MT-LNF-001464

September 2, 2017

40,164 Acres (IR Flight 9/2/17 @0113)



- ( ) Division Break
- Dip Site
- Drop Point
- ⊗ Fire Origin
- ⊕ Unimproved Landing Area
- Helispot
- ⌘ Lookout
- ⊕ Water Source
- Uncontrolled Fire Edge
- R · R · Road as Completed Line
- XXXXX Completed Dozer Line
- × · · · Proposed Dozer Line
- ⌘ Fire Break Planned or Incomplete
- Forest Service Undetermined
- Interstate and Highways
- Forest Service System Roads**
- 1 - BASIC (CLOSED); 2 - HIGH CLEARANCE
- 3 - PASSENGER CARS; 4 - MODERATE COMFORT; 5 - HIGH COMFORT
- Private Roads
- County
- Plum Creek Roads
- Short Term Spec Roads
- ⊗ Fire Perimeter
- IR Intense Heat
- Fire History
- Montana Fish, Wildlife, and Parks
- US Forest Service

Northern Rockies  
Incident Management  
Team

0 0.25 0.5 1 Miles