

# Operations Map

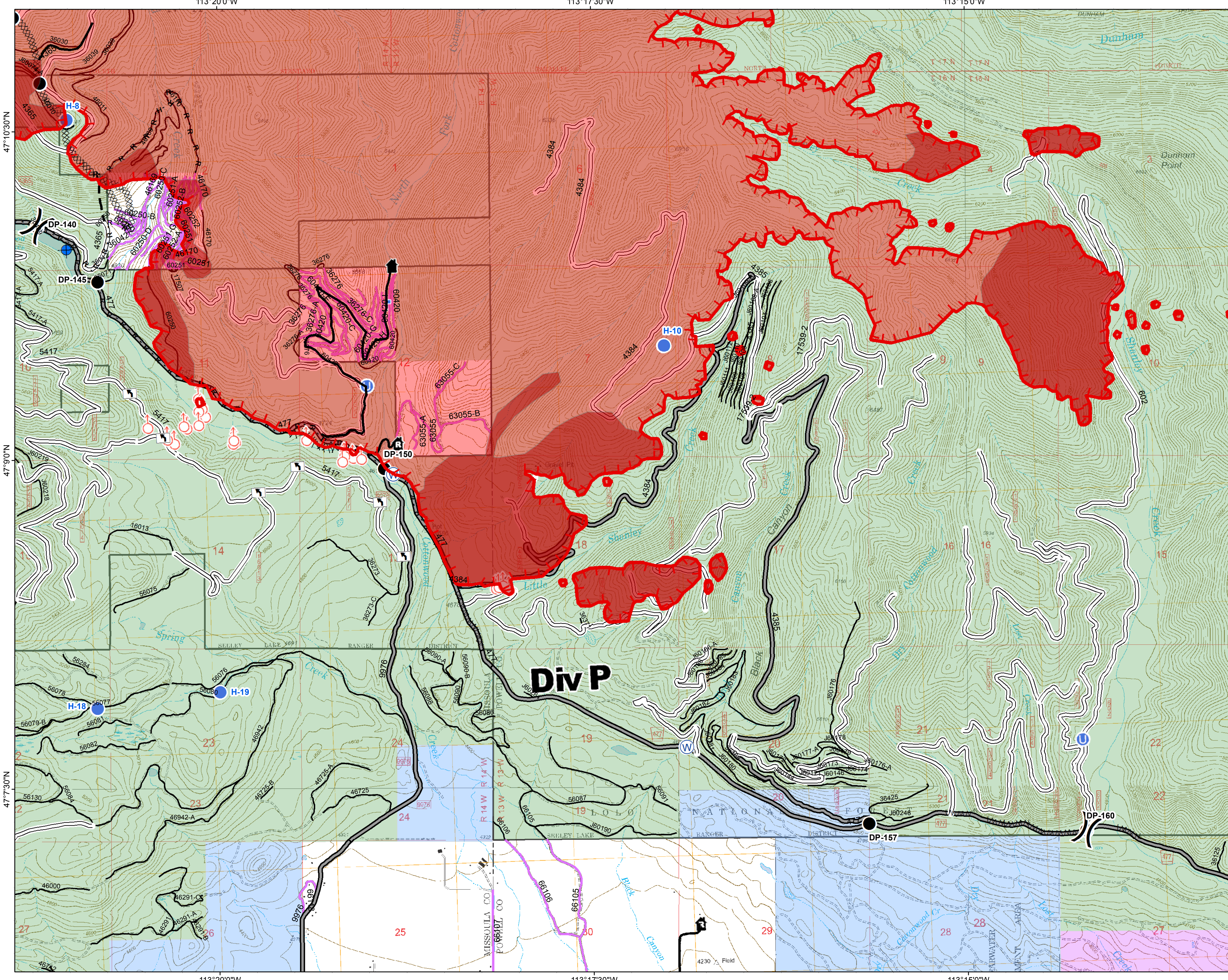
## DIV P

### Rice Ridge Fire

MT-LNF-001464

September 2, 2017

40,164 Acres (IR Flight 9/2/17 @0113)



- ( ) Division Break
- Dip Site
- Drop Point
- Unimproved Landing Area
- Helispot
- ⌘ Lookout
- Spot Fire
- ⊙ Water Source
- ⊠ Turn Around Area
- Uncontrolled Fire Edge
- H · H · Completed Hand Line
- R · R · Road as Completed Line
- Line Break Completed
- XXXXX Completed Dozer Line
- Fire Break Planned or Incomplete
- - - Planned Fire Line
- Forest Service Undetermined
- Other Road
- Forest Service System Roads**
- 1 - BASIC(CLOSED); 2 - HIGH CLEARANCE
- 3 - PASSENGER CARS; 4 - MODERATE COMFORT; 5 - HIGH COMFORT
- Private Roads
- Fire Perimeter
- IR Intense Heat
- Montana State Trust Lands
- Montana University System
- US Forest Service

Northern Rockies  
Incident Management  
Team

0 0.25 0.5 1 Miles