

Operations Map

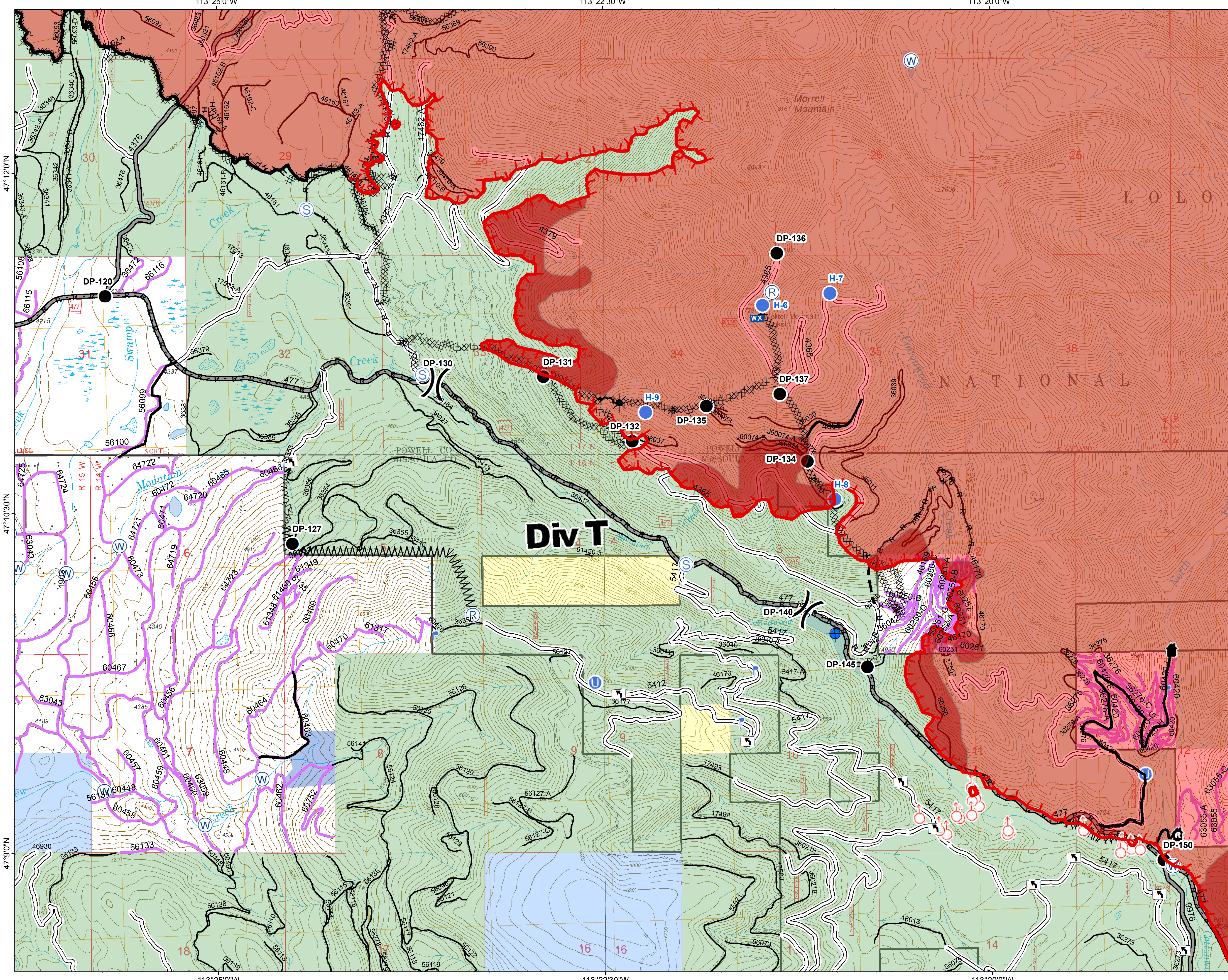
DIV T

Rice Ridge Fire

MT-LNF-001464

September 2, 2017

40,164 Acres (IR Flight 9/2/17 @0113)



- (X) Division Break
- (R) Repeater
- (D) Dip Site
- (●) Drop Point
- (S) Unimproved Landing Area
- (●) Helispot
- (F) Lookout
- (WX) Mobile Weather Unit
- (●) Spot Fire
- (S) Staging Area
- (W) Water Source
- (W) Turn Around Area
- (—) Completed Line
- (—) Uncontrolled Fire Edge
- (H · H) Completed Hand Line
- (R · R) Road as Completed Line
- (—) Line Break Completed
- (—) Completed Dozer Line
- (*) Explosive Line
- (—) Fire Break Planned or Incomplete
- (—) Planned Fire Line
- (—) Highlighted Manmade Feature
- (—) Forest Service Undetermined
- (—) Other Road
- Forest Service System Roads**
 - 1 - BASIC(CLOSED); 2 - HIGH CLEARANCE
 - 3 - PASSENGER CARS; 4 - MODERATE COMFORT; 5 - HIGH COMFORT
- (—) Private Roads
- (—) Plum Creek Roads
- (—) Other Forest Roads
- (—) Fire Perimeter
- (—) IR Intense Heat
- (—) County Government
- (—) Montana State Trust Lands
- (—) US Bureau of Land Management
- (—) US Forest Service

Northern Rockies
Incident Management
Team

