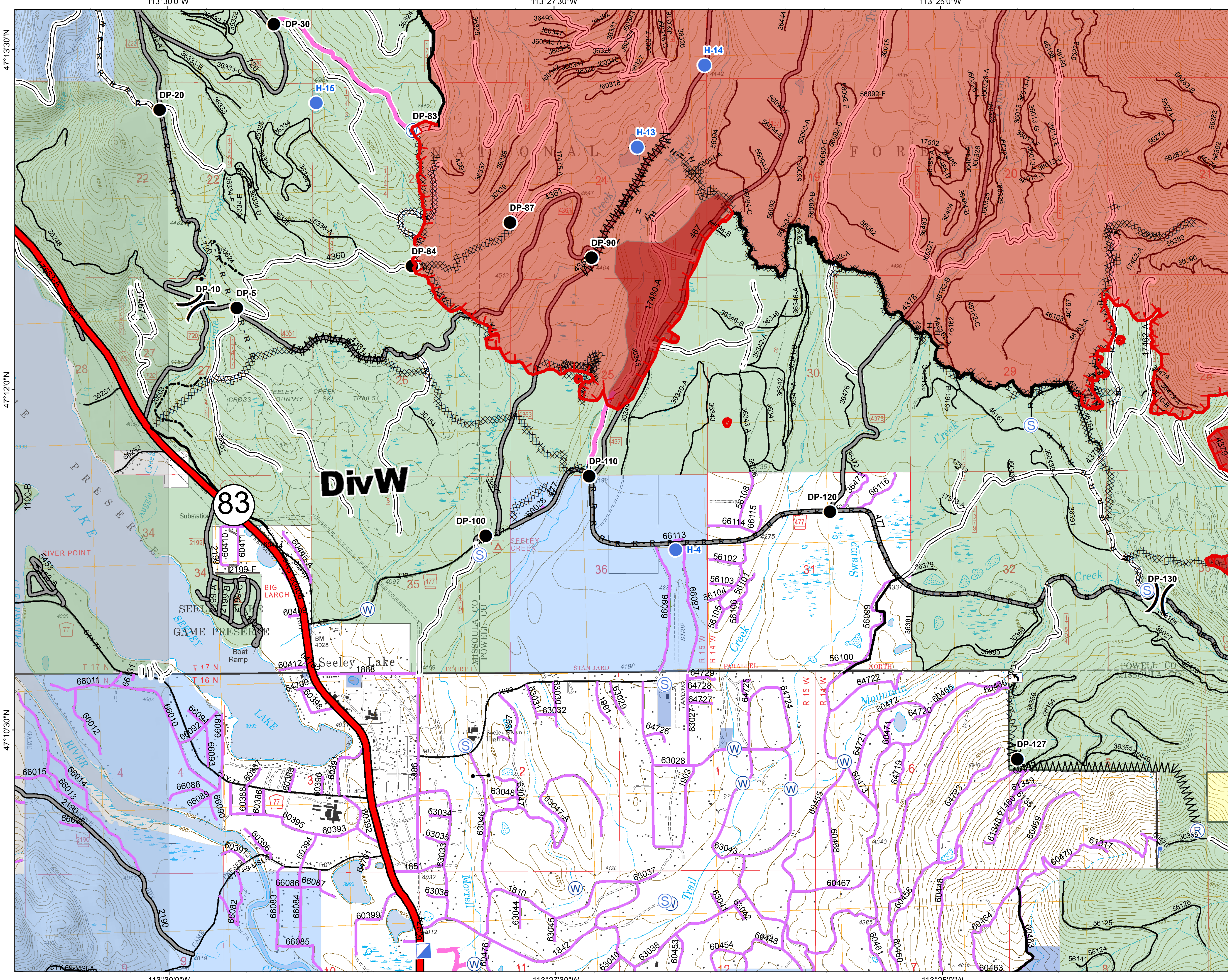


# Operations Map DIV W

Rice Ridge Fire  
MT-LNF-001464  
September 2, 2017  
40,164 Acres (IR Flight 9/2/17 @0113)



- (X) Division Break
- (R) Repeater
- (D) Dip Site
- (●) Drop Point
- (●) Helispot
- (I) Incident Command Post
- (F) Lookout
- (S) Staging Area
- (W) Water Source
- (—) Gate - No through Access
- (T) Turn Around Area
- (—) Completed Line
- (—) Uncontrolled Fire Edge
- (H · H ·) Completed Hand Line
- (R · R ·) Road as Completed Line
- (M) Line Break Completed
- (X · X ·) Completed Dozer Line
- (X · · ·) Proposed Dozer Line
- (~) Fire Break Planned or Incomplete
- (· · · ·) Highlighted Manmade Feature
- (—) Other
- (—) Forest Service Undetermined
- (—) Other Road
- (—) Interstate and Highways
- Forest Service System Roads**
- (—) 1 - BASIC(CLOSED); 2 - HIGH CLEARANCE
- (—) 3 - PASSENGER CARS; 4 - MODERATE COMFORT; 5 - HIGH COMFORT
- (—) Private Roads
- (—) County
- (—) Plum Creek Roads
- (—) Short Term Spec Roads
- (—) Fire Perimeter
- (—) IR Intense Heat
- (—) County Government
- (—) Montana State Trust Lands
- (—) US Bureau of Land Management
- (—) US Forest Service

Northern Rockies  
Incident Management  
Team

0 0.25 0.5 1 Miles