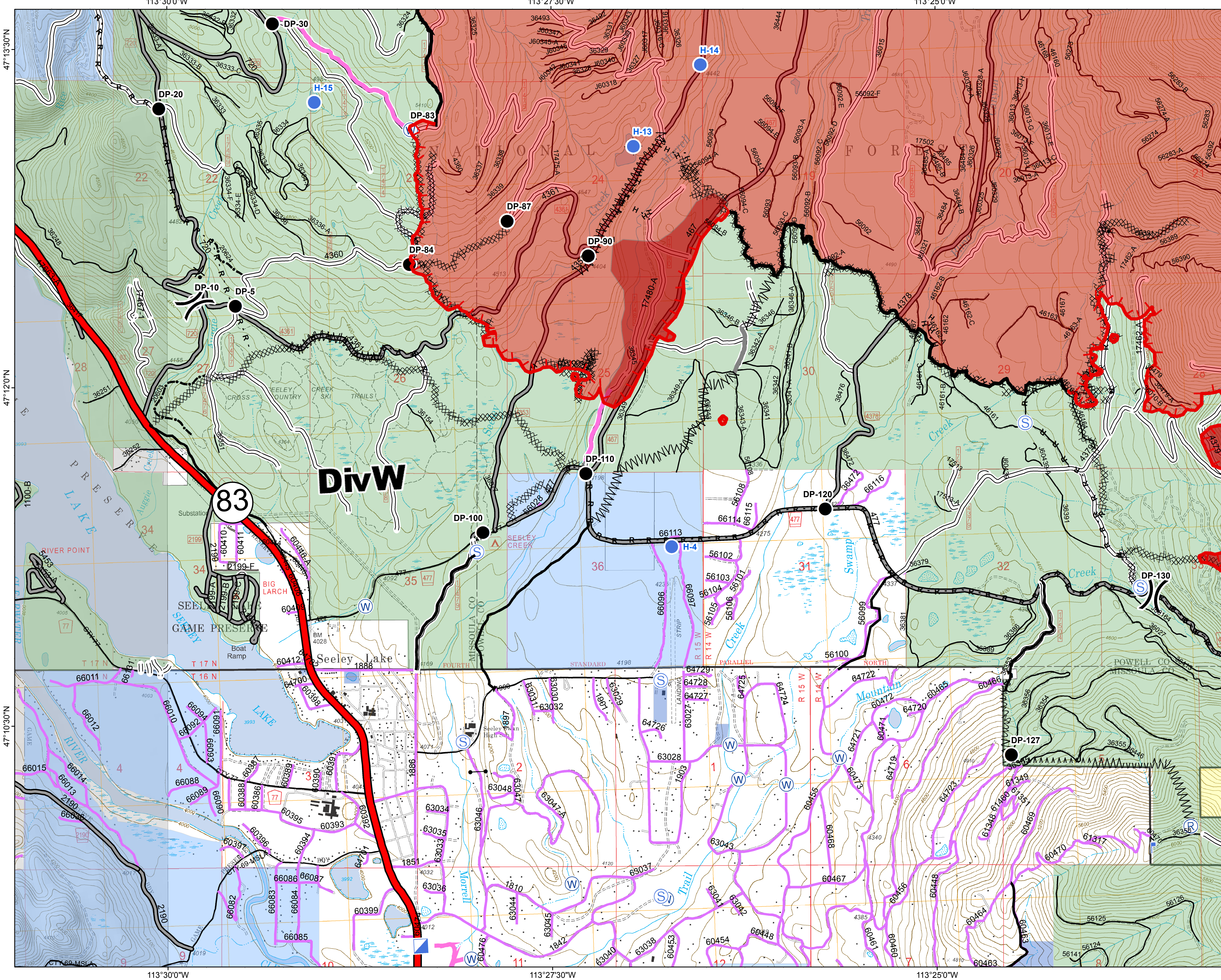


Operations Map DIV W

Rice Ridge Fire MT-LNF-001464

September 2, 2017 40,164 Acres (IR Flight 9/2/17 @0113)



- (X) Division Break
- (R) Repeater
- (D) Dip Site
- (●) Drop Point
- (H) Helispot
- (ICP) Incident Command Post
- (L) Lookout
- (S) Staging Area
- (W) Water Source
- (G) Gate - No through Access
- (TAA) Turn Around Area
- (—) Completed Line
- (—) Uncontrolled Fire Edge
- (H-H) Completed Hand Line
- (R-R) Road as Completed Line
- (—) Line Break Completed
- (XXXX) Completed Dozer Line
- (X-X) Proposed Dozer Line
- (---) Fire Break Planned or Incomplete
- (---) Latched Secondary Line
- (---) Highlighted Manmade Feature
- (---) Other
- (---) Forest Service Undetermined
- (---) Other Road
- (---) Interstate and Highways
- Forest Service System Roads**
- (---) 1 - BASIC(CLOSED); 2 - HIGH CLEARANCE
- (---) 3 - PASSENGER CARS; 4 - MODERATE COMFORT; 5 - HIGH COMFORT
- (---) Private Roads
- (---) County
- (---) Plum Creek Roads
- (---) Short Term Spec Roads
- (---) Fire Perimeter
- (---) IR Intense Heat
- (---) County Government
- (---) Montana State Trust Lands
- (---) US Bureau of Land Management
- (---) US Forest Service