

# Operations Map

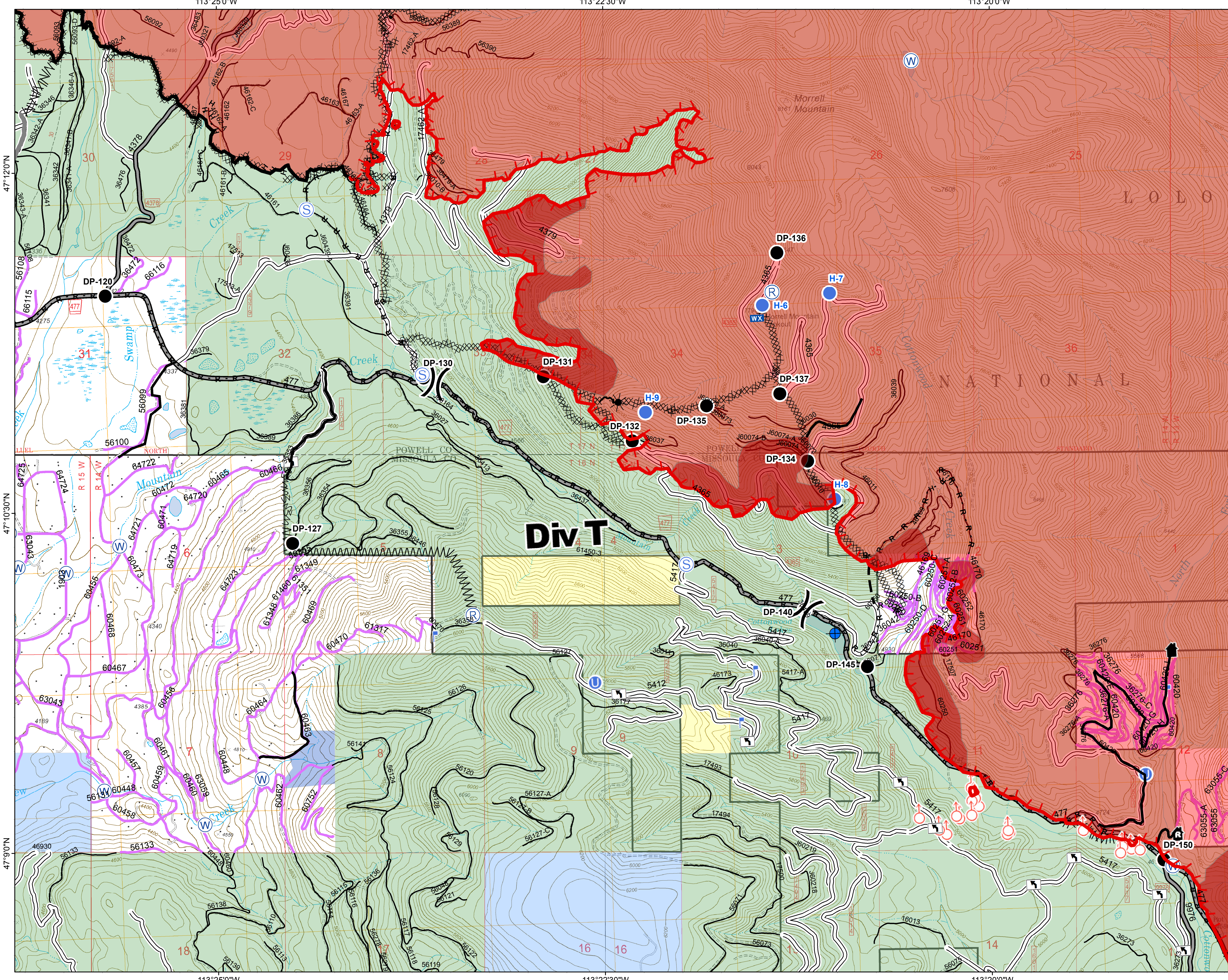
## DIV T

### Rice Ridge Fire

MT-LNF-001464

September 2, 2017

40,164 Acres (IR Flight 9/2/17 @0113)



- (X) Division Break
- (R) Repeater
- (D) Dip Site
- (●) Drop Point
- (U) Unimproved Landing Area
- (●) Helispot
- (L) Lookout
- (WX) Mobile Weather Unit
- (♂) Spot Fire
- (S) Staging Area
- (W) Water Source
- (T) Turn Around Area
- (—) Completed Line
- (—) Uncontrolled Fire Edge
- (H-H) Completed Hand Line
- (R-R) Road as Completed Line
- (M) Line Break Completed
- (X) Completed Dozer Line
- (\*) Explosive Line
- (~) Fire Break Planned or Incomplete
- (—) Planned Fire Line
- (—) Planned Secondary Line
- (- - -) Highlighted Manmade Feature
- (—) Forest Service Undetermined
- (—) Other Road
- Forest Service System Roads**
  - 1 - BASIC(CLOSED); 2 - HIGH CLEARANCE
  - 3 - PASSENGER CARS; 4 - MODERATE COMFORT; 5 - HIGH COMFORT
- (—) Private Roads
- (—) Plum Creek Roads
- (—) Other Forest Roads
- (Red) Fire Perimeter
- (Red) IR Intense Heat
- (Blue) County Government
- (Light Blue) Montana State Trust Lands
- (Yellow) US Bureau of Land Management
- (Green) US Forest Service

Northern Rockies  
Incident Management  
Team

0 0.25 0.5 1 Miles