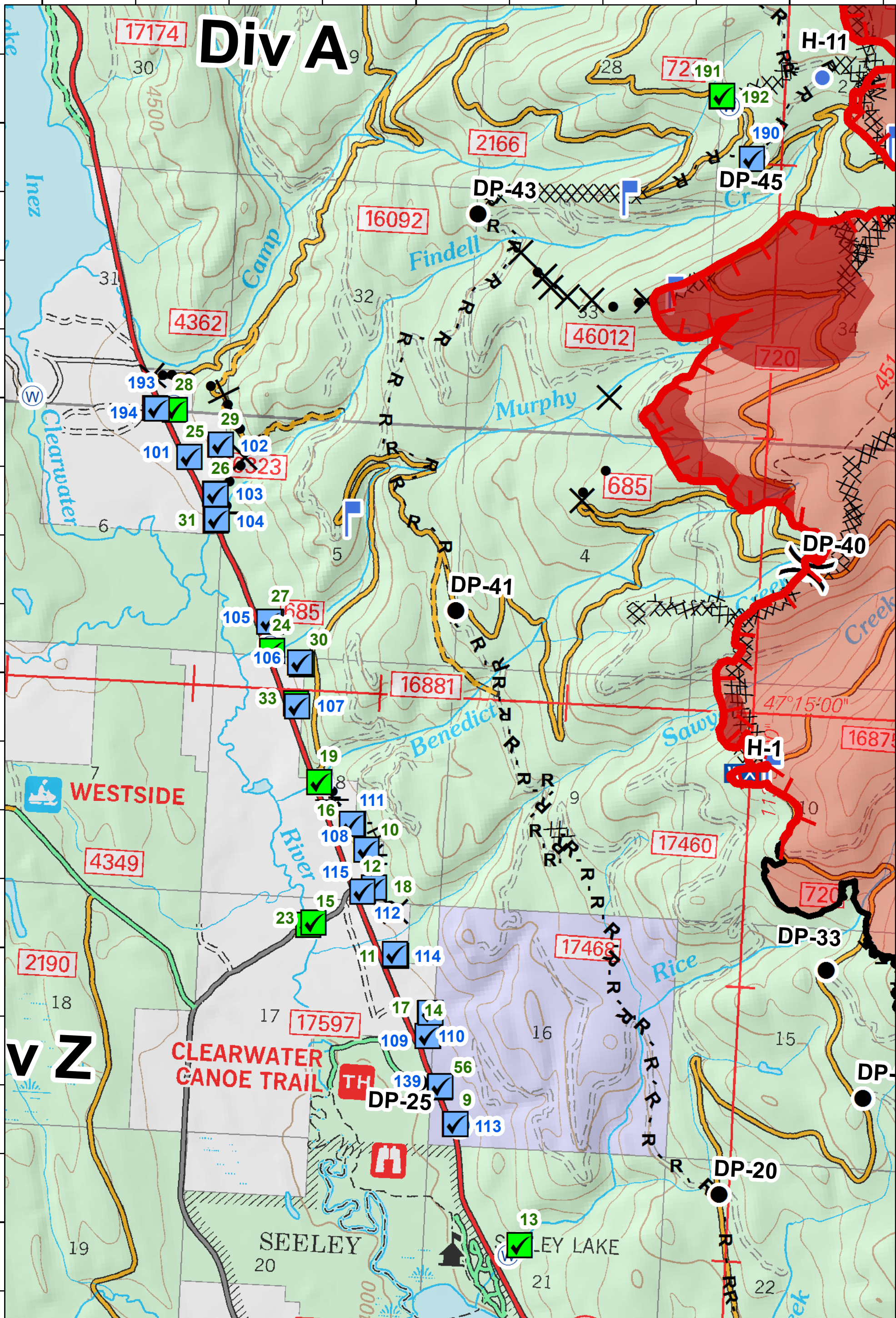


113°34'0"W

113°32'0"W

113°30'0"W

# Div A



**Accountable Property Map**  
 RICE RIDGE FIRE  
 MT-LNF-001464  
**MAP 1**  
 September 02, 2017  
 40,164 Acres  
 (IR Flight 9/02/17 @ 0113)  
 Northern Rockies  
 Incident Management  
 Team  
 Date Created:  
 9/2/2017  
 3:28:14 PM

- |                |                     |                 |                        |                                  |                        |
|----------------|---------------------|-----------------|------------------------|----------------------------------|------------------------|
| Division Break | Lookout             | Pump - Mark III | Completed Hand Line    | Proposed Dozer Line              | IR Intense Heat        |
| Drop Point     | Mobile Weather Unit | Pump - Volume   | Road as Completed Line | Fire Break Planned or Incomplete | Fire Perimeter         |
| Helispot       | Water Source        | Pump - Other    | Completed Dozer Line   | Completed Line                   | Uncontrolled Fire Edge |
|                |                     | Water Tank      |                        |                                  |                        |