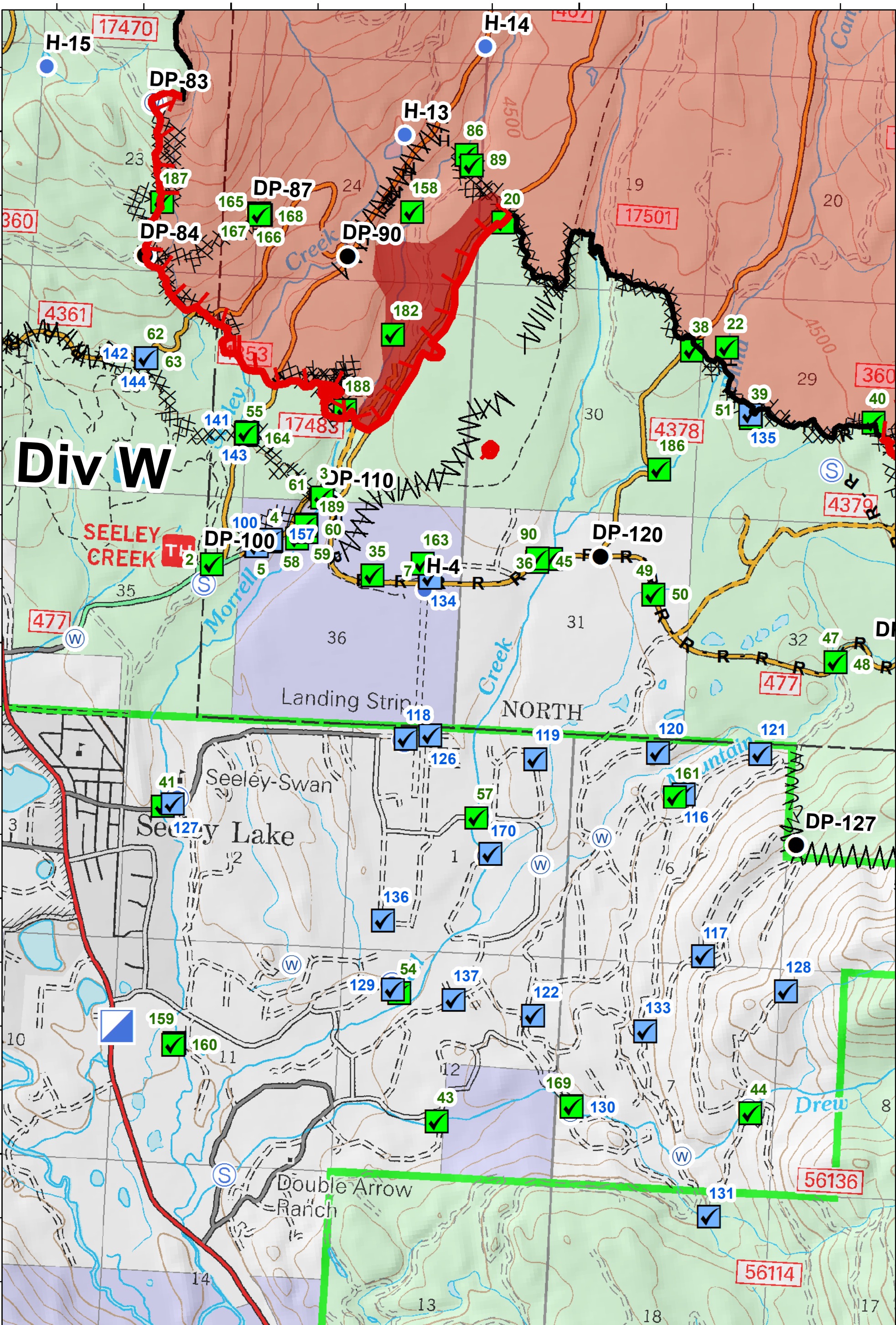


113°28'0"W

113°26'0"W

47°13'0"N
47°12'0"N
47°11'0"N
47°10'0"N
47°9'0"N

47°13'0"N
47°12'0"N
47°11'0"N
47°10'0"N
47°9'0"N



Div W

Accountable Property Map
 RICE RIDGE FIRE
 MT-LNF-001464
MAP 2
 September 02, 2017
 40,164 Acres
 (IR Flight 9/02/17 @ 0113)
 Northern Rockies
 Incident Management
 Date Created:
 9/2/2017
 3:41:29 PM

● Drop Point	▣ Incident Command Post	✓ Pump - Mark III	H - Completed Hand Line	XXXX Completed Dozer Line	IR Intense Heat
● Helispot	Ⓢ Staging Area	✓ Pump - Volume	R - Road as Completed Line	〰 Fire Break Planned or Incomplete	Fire Perimeter
Ⓢ Water Source	Ⓢ Water Tank	✓ Pump - Other	〰 Line Break Completed	— Completed Line	
				— Uncontrolled Fire Edge	