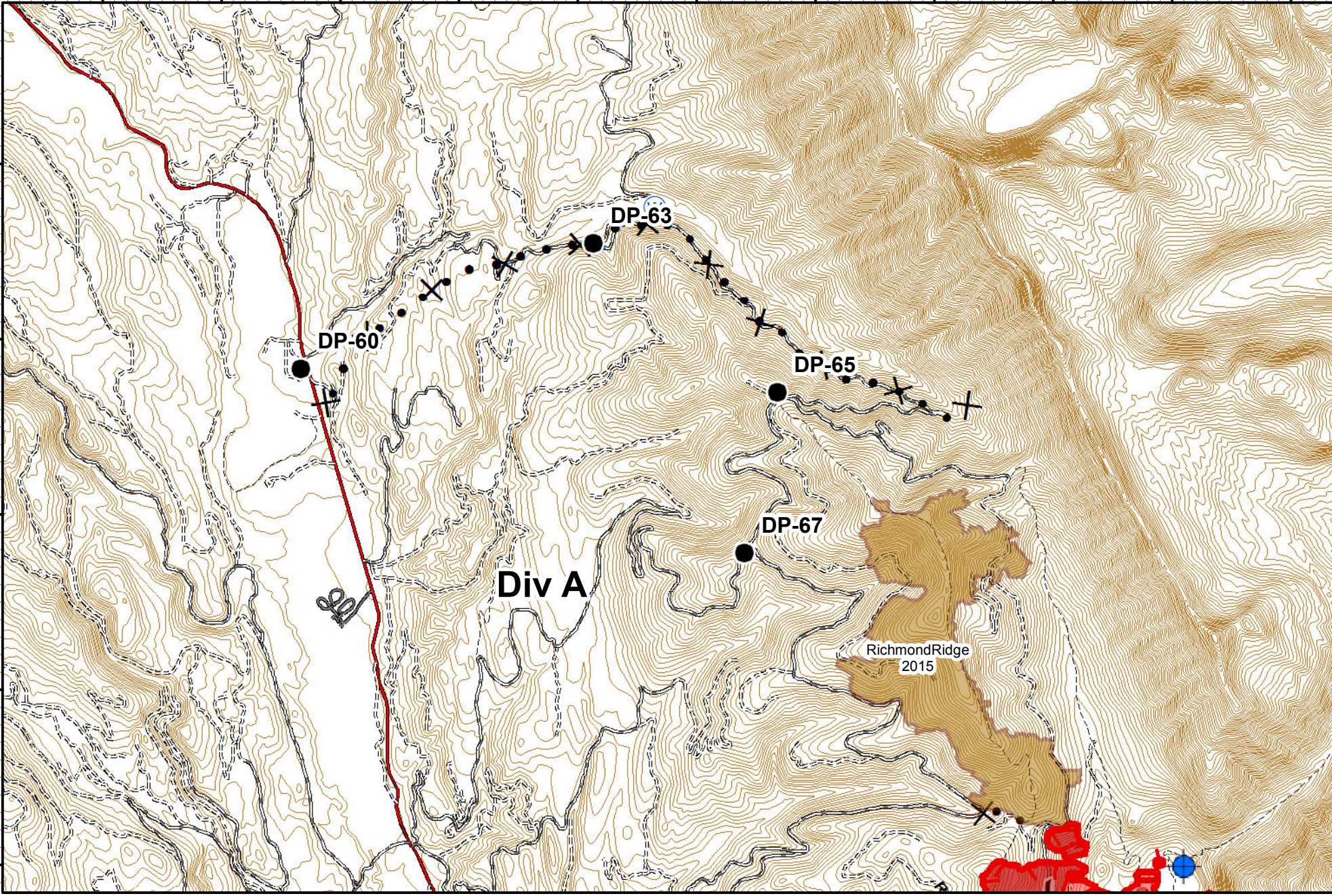


113°37'0"W 113°36'0"W 113°35'0"W 113°34'0"W 113°33'0"W 113°32'0"W 113°31'0"W 113°30'0"W 113°29'0"W 113°28'0"W 113°27'0"W

47°22'0"N
47°21'0"N
47°20'0"N
47°19'0"N
47°18'0"N

47°22'0"N
47°21'0"N
47°20'0"N
47°19'0"N
47°18'0"N



Incident Action Plan
Rice Ridge Fire
MAP 1

Northern Rockies
 Incident Management Team
 MT-LNF-001464
 09/02/2017
 Approx Acres 37,032
 0 0.5 1 Miles

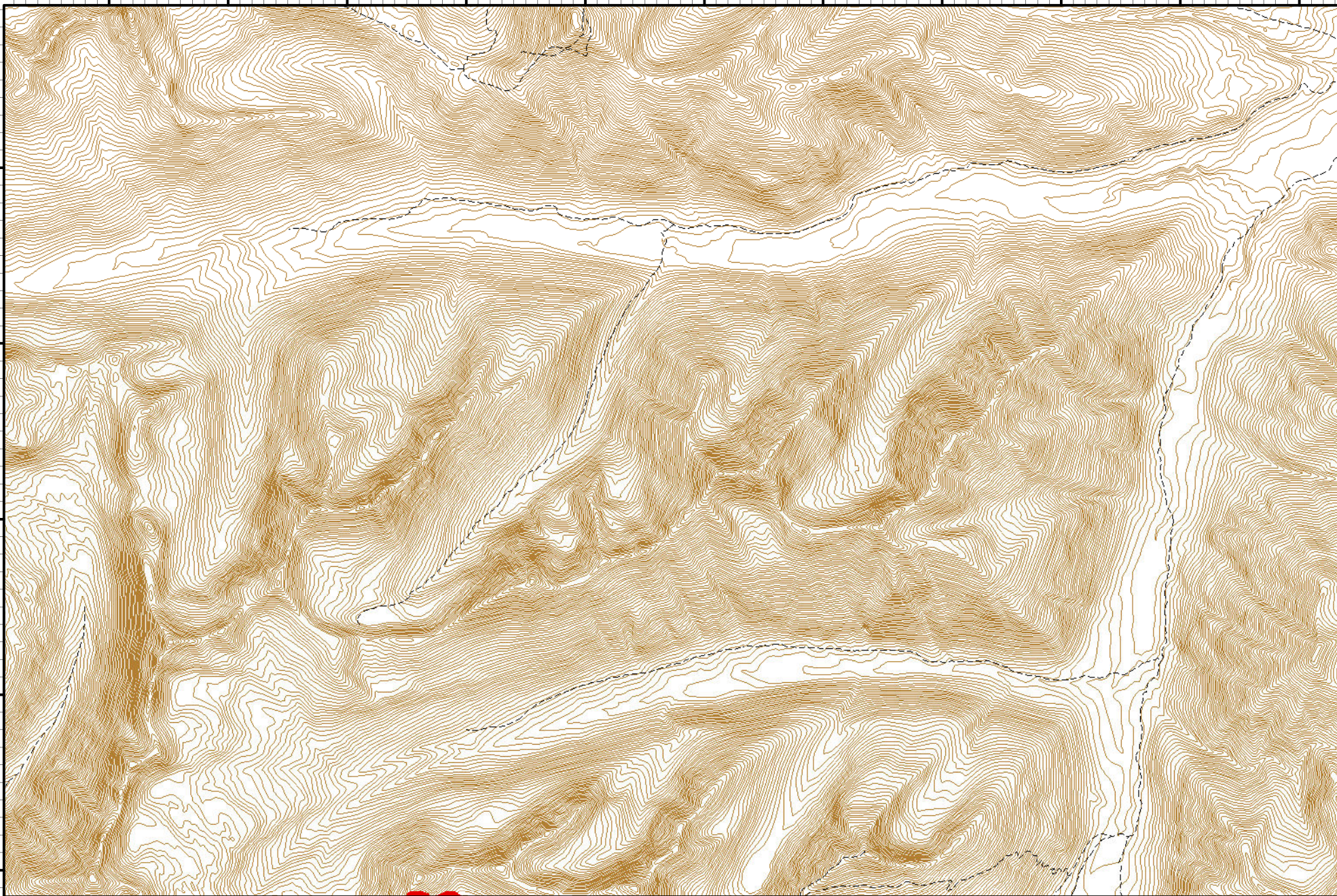


Dip Site	Division Break	Proposed Dozer Line	Wildfire Daily Fire Perimeter
Drop Point	Road as Completed Line	Uncontro... Fire Edge	IR_Intens...
Water Source			

113°26'0"W 113°25'0"W 113°24'0"W 113°23'0"W 113°22'0"W 113°21'0"W 113°20'0"W 113°19'0"W 113°18'0"W 113°17'0"W 113°16'0"W

47°22'0"N
47°21'0"N
47°20'0"N
47°19'0"N
47°18'0"N

47°22'0"N
47°21'0"N
47°20'0"N
47°19'0"N
47°18'0"N



Incident Action Plan

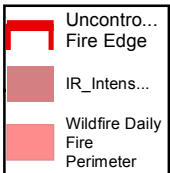
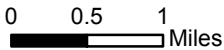
Rice Ridge Fire

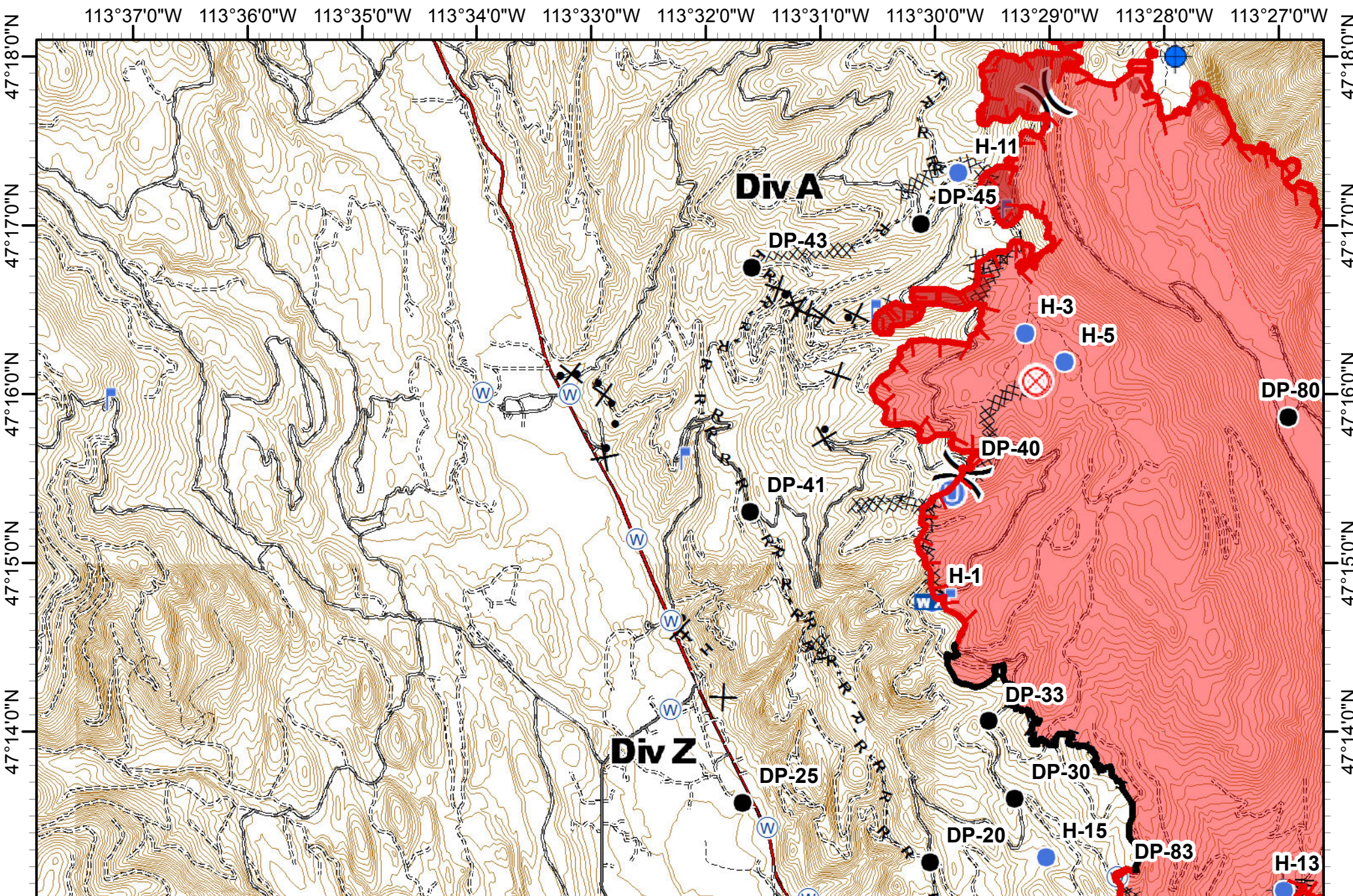
MAP 2

MT-LNF-001464


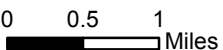
09/02/2017

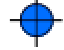










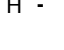





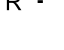
Approx Acres 37,032



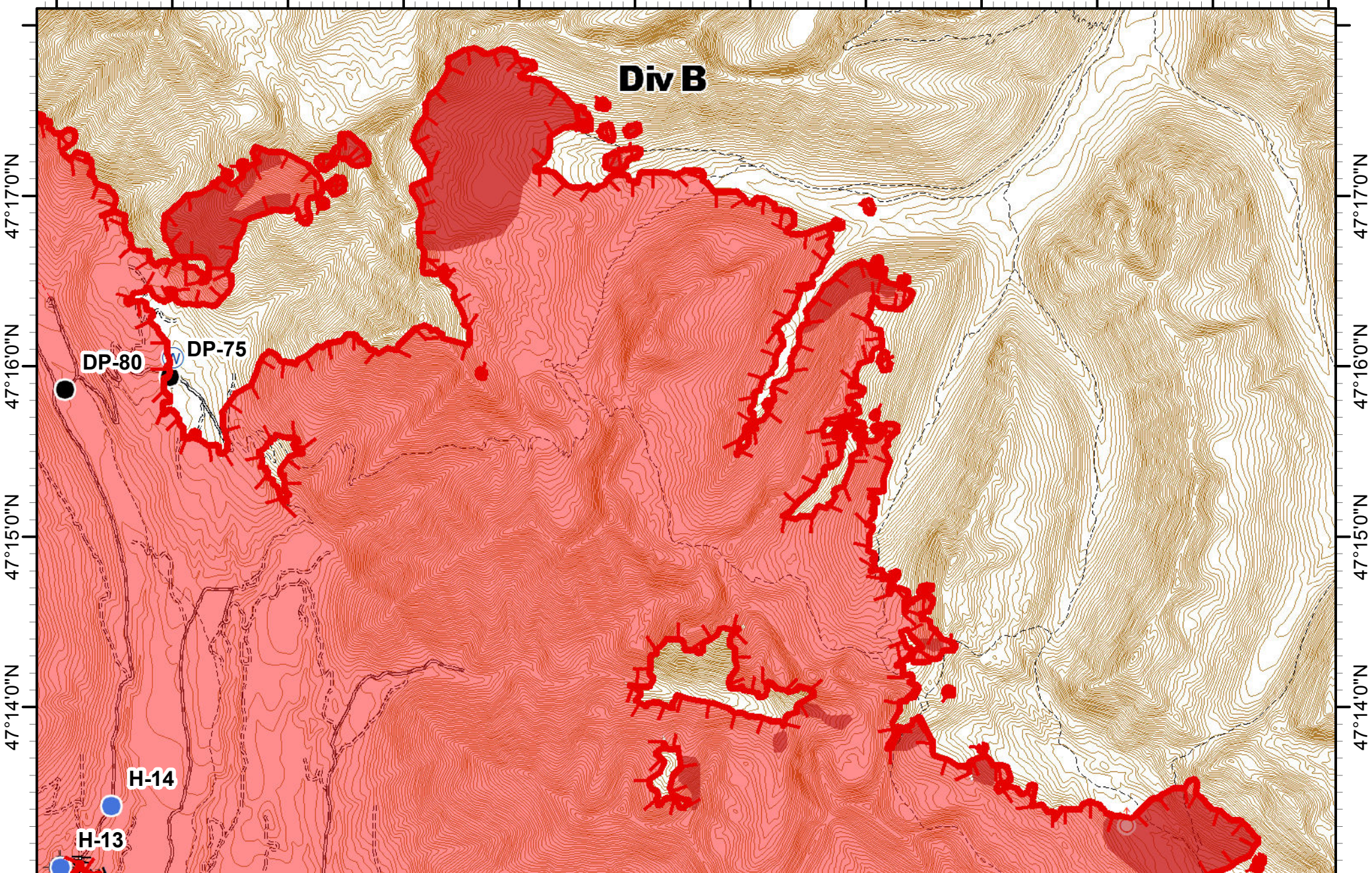


Incident Action Plan
Rice Ridge Fire
MAP 3


 MT-LNF-001464
 09/02/2017
 Approx Acres 37,032


	Dip Site		Fire Origin		Helispot		Mobile Weather Unit		Completed Dozer Line		Line Break Completed		Completed Line
	Drop Point		Unimproved Landing Area		Lookout		Division Break		Completed Hand Line		Proposed Dozer Line		Fire Break Planned or Incomplete
	Uncontro... Fire Edge		IR_Intens...		Wildfire Daily Fire Perimeter		R - Road as Completed Line						

113°27'0"W 113°26'0"W 113°25'0"W 113°24'0"W 113°23'0"W 113°22'0"W 113°21'0"W 113°20'0"W 113°19'0"W 113°18'0"W 113°17'0"W 113°16'0"W



47°17'0"N
47°16'0"N
47°15'0"N
47°14'0"N

47°17'0"N
47°16'0"N
47°15'0"N
47°14'0"N

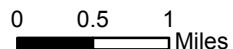
Incident Action Plan

Rice Ridge Fire

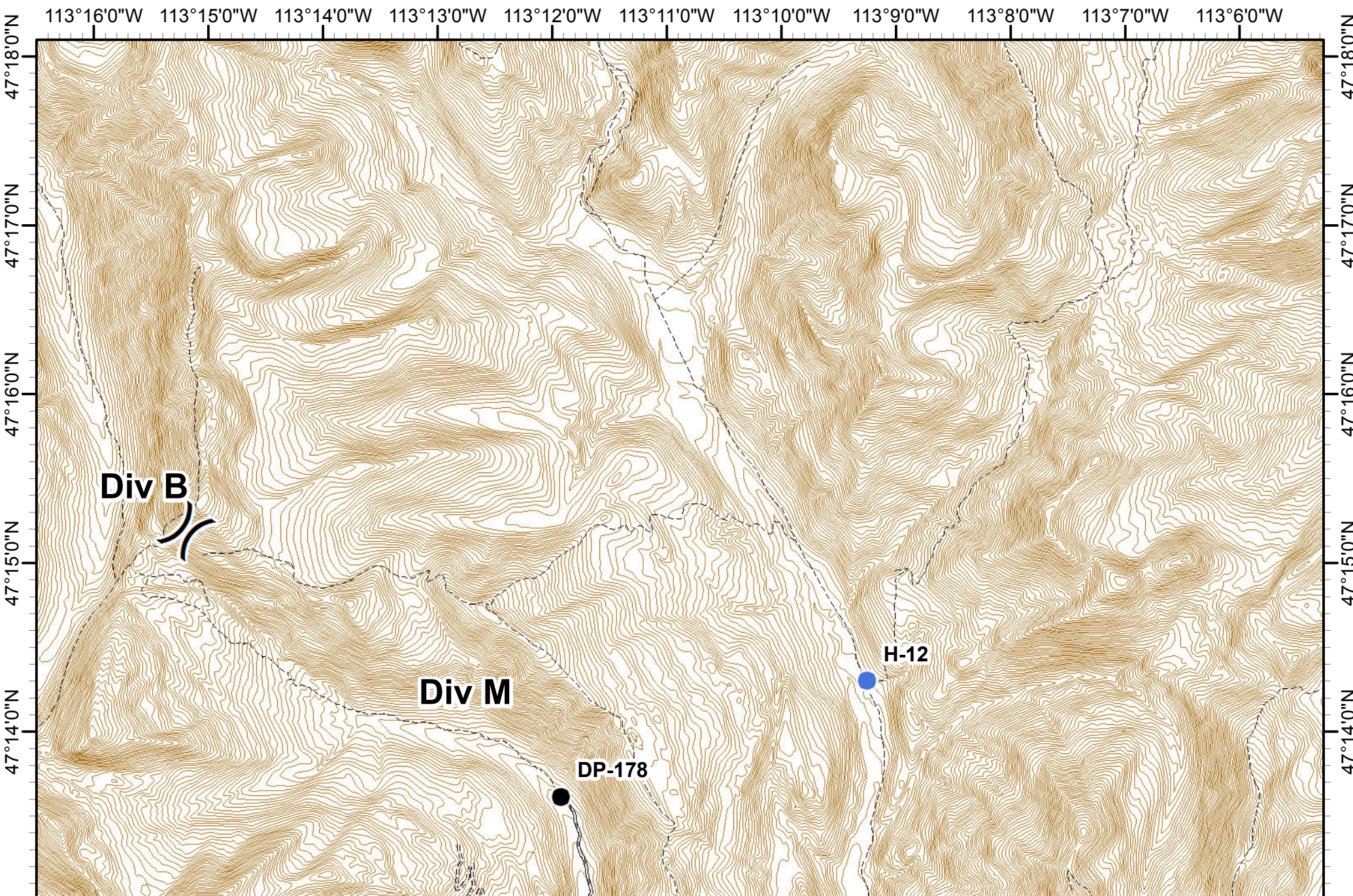
MAP 4



MT-LNF-001464
09/02/2017
Approx Acres 37,032



Dip Site	Lookout	Line Break Completed
Drop Point	Spot Fire	Uncontro... Fire Edge
Helispot	Water Source	IR_Intens...
Completed Hand Line		Wildfire Daily Fire Perimeter



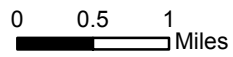
Incident Action Plan




Rice Ridge Fire

MAP 5

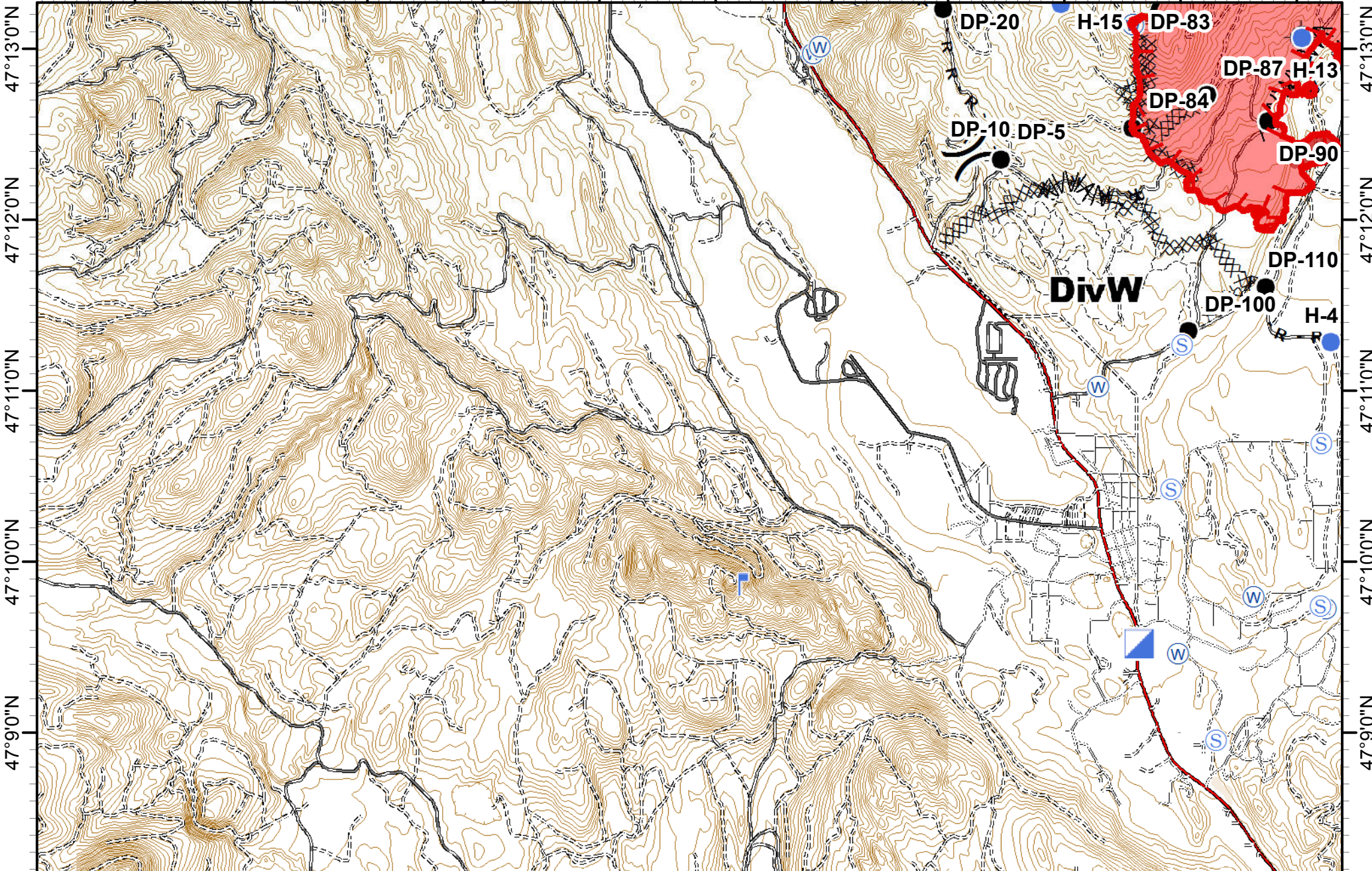


MT-LNF-001464
09/02/2017
Approx Acres 37,032



	Drop Point		Division Break
	Helispot		

113°37'0"W 113°36'0"W 113°35'0"W 113°34'0"W 113°33'0"W 113°32'0"W 113°31'0"W 113°30'0"W 113°29'0"W 113°28'0"W 113°27'0"W



Incident Action Plan
Rice Ridge Fire
MAP 6

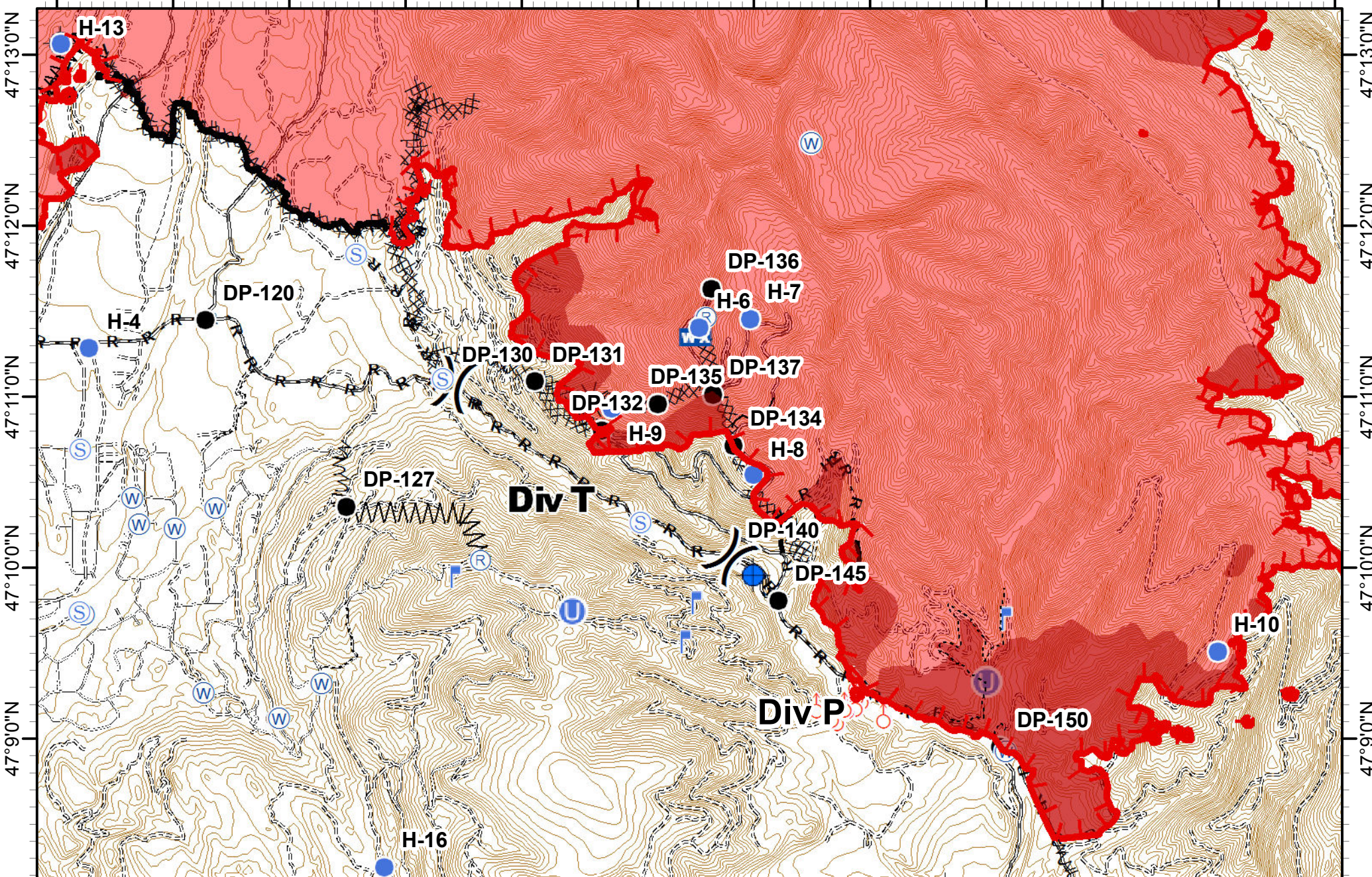
MT-LNF-001464
 09/02/2017
 Approx Acres 37,032

0 0.5 1 Miles



Dip Site	Incident Command Post	Staging Area	Completed Dozer Line	Line Break Completed	IR_Intens...
Drop Point	Lookout	Water Source	Completed Hand Line	Proposed Dozer Line	Wildfire Daily Fire Perimeter
Helispot	Spot Fire	Road as Completed Line	Division Break	Completed Line	Uncontro... Fire Edge

113°27'0"W 113°26'0"W 113°25'0"W 113°24'0"W 113°23'0"W 113°22'0"W 113°21'0"W 113°20'0"W 113°19'0"W 113°18'0"W 113°17'0"W 113°16'0"W



Incident Action Plan
Rice Ridge Fire
MAP 7

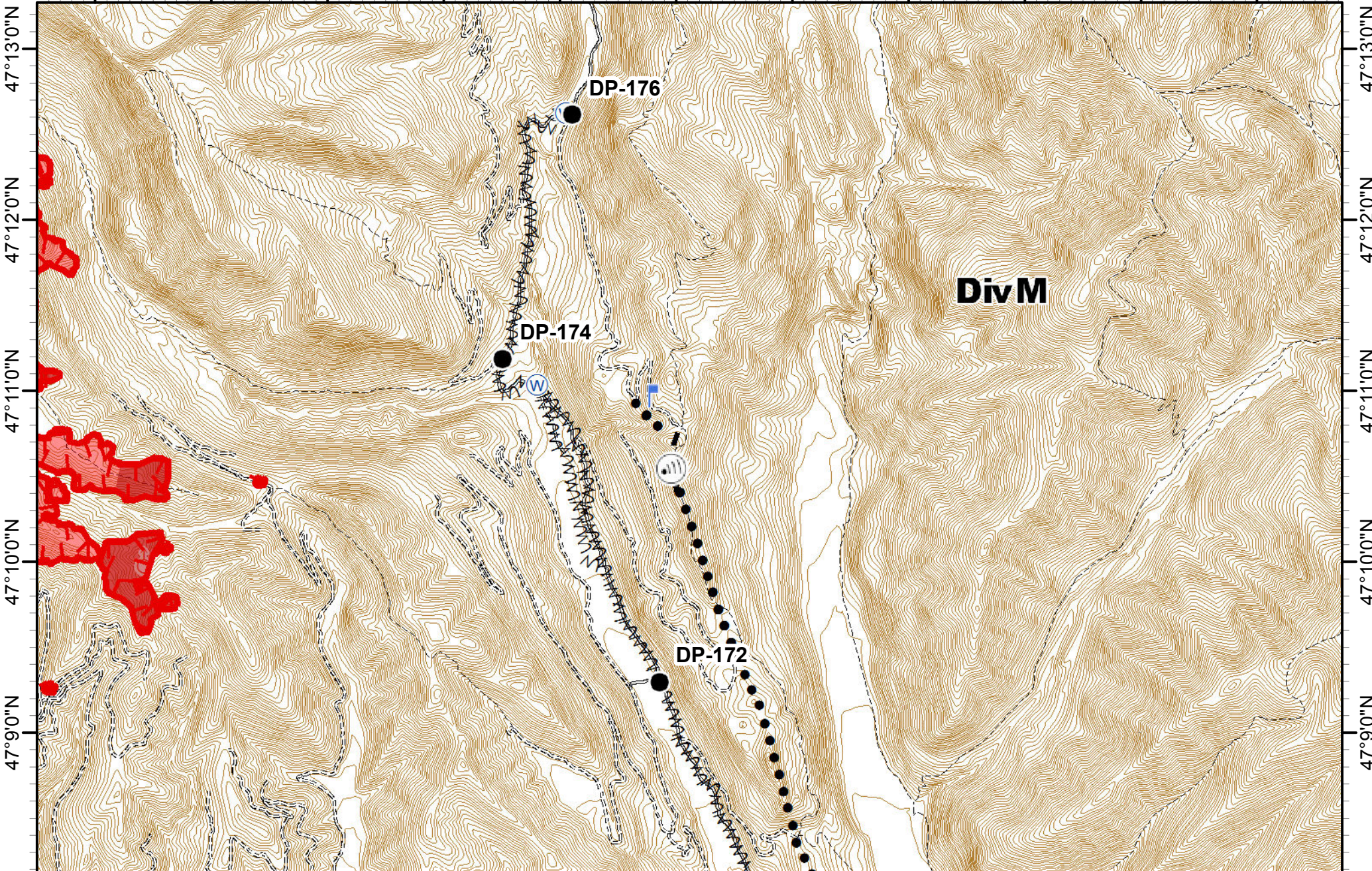
MT-LNF-001464
 09/02/2017
 Approx Acres 37,032

0 0.5 1 Miles



Repeater	Unimproved Landing Area	Spot Fire	Division Break	H - Completed Hand Line	Explosive Line	Highlighted Manmade Feature	Wildfire Daily Fire Perimeter
Dip Site	Helispot	Staging Area	Completed Dozer Line	R - Road as Completed Line	Fire Break Planned or Incomplete	Completed Line	Uncontro... Fire Edge
Drop Point	Lookout	Water Source	Mobile Weather Unit	Line Break Completed	Planned Fire Line	IR_Intens...	

113°16'0"W 113°15'0"W 113°14'0"W 113°13'0"W 113°12'0"W 113°11'0"W 113°10'0"W 113°9'0"W 113°8'0"W 113°7'0"W 113°6'0"W



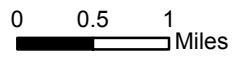
Incident Action Plan

Rice Ridge Fire

MAP 8

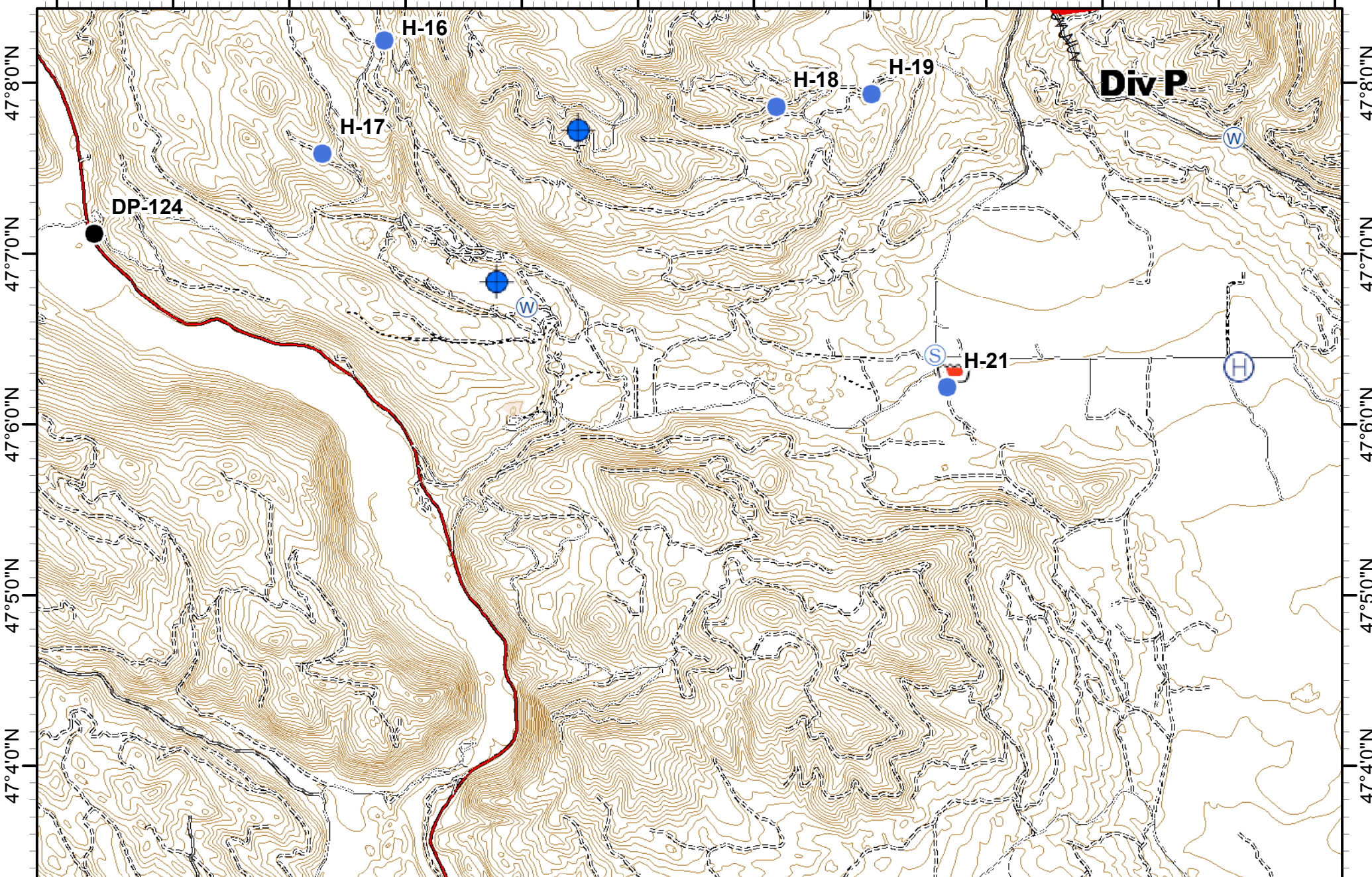


MT-LNF-001464
09/02/2017
Approx Acres 37,032



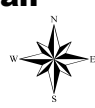
Drop Point	Lookout	Fire Break Planned or Incomplete	Uncontro... Fire Edge
Internet Access	Spot Fire	Planned Fire Line	IR_Intens...
Water Source	Planned Secondary Line	Wildfire Daily Fire Perimeter	

113°27'0"W 113°26'0"W 113°25'0"W 113°24'0"W 113°23'0"W 113°22'0"W 113°21'0"W 113°20'0"W 113°19'0"W 113°18'0"W 113°17'0"W 113°16'0"W



Incident Action Plan
Rice Ridge Fire
MAP 9

Northern Rockies
 Incident Management Team
 MT-LNF-001464
 09/02/2017
 Approx Acres 37,032
 0 0.5 1 Miles



Retardant/Pit	Helibase	Water Source	Uncontro... Fire Edge
Dip Site	Helispot	Road as Completed Line	IR_Intens...
Drop Point	Staging Area	Fire Break Planned or Incomplete	Wildfire Daily Fire Perimeter

113°16'0"W 113°15'0"W 113°14'0"W 113°13'0"W 113°12'0"W 113°11'0"W 113°10'0"W 113°9'0"W 113°8'0"W 113°7'0"W 113°6'0"W

47°8'0"N

47°7'0"N

47°6'0"N

47°5'0"N

47°4'0"N

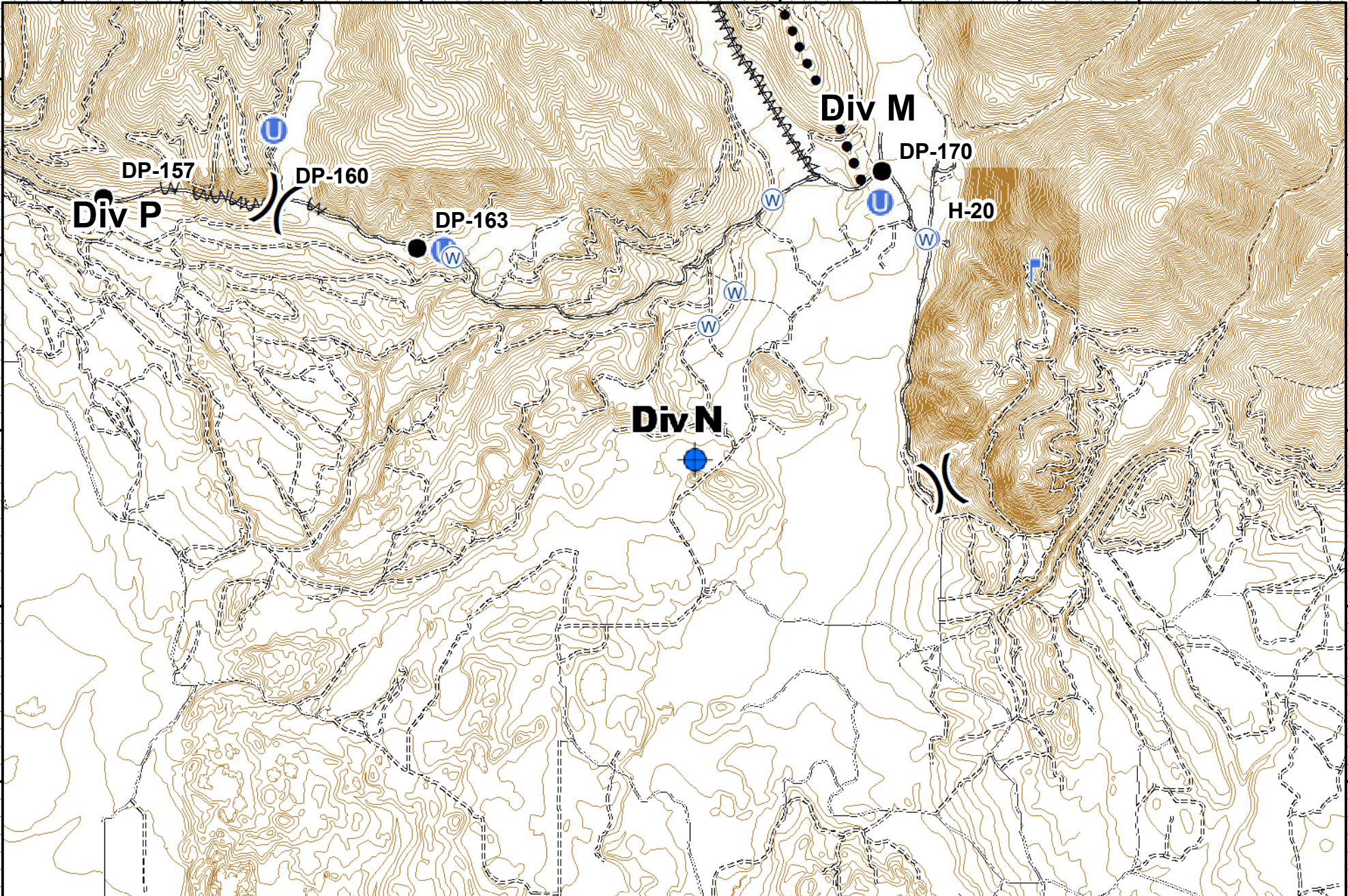
47°8'0"N

47°7'0"N

47°6'0"N

47°5'0"N

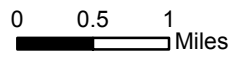
47°4'0"N



Incident Action Plan
Rice Ridge Fire
MAP 10



MT-LNF-001464
 09/02/2017
 Approx Acres 37,032



Dip Site	Helispot	Division Break	Planned Secondary Line
Drop Point	Lookout	Fire Break Planned or Incomplete	
Unimproved Landing Area	Water Source		