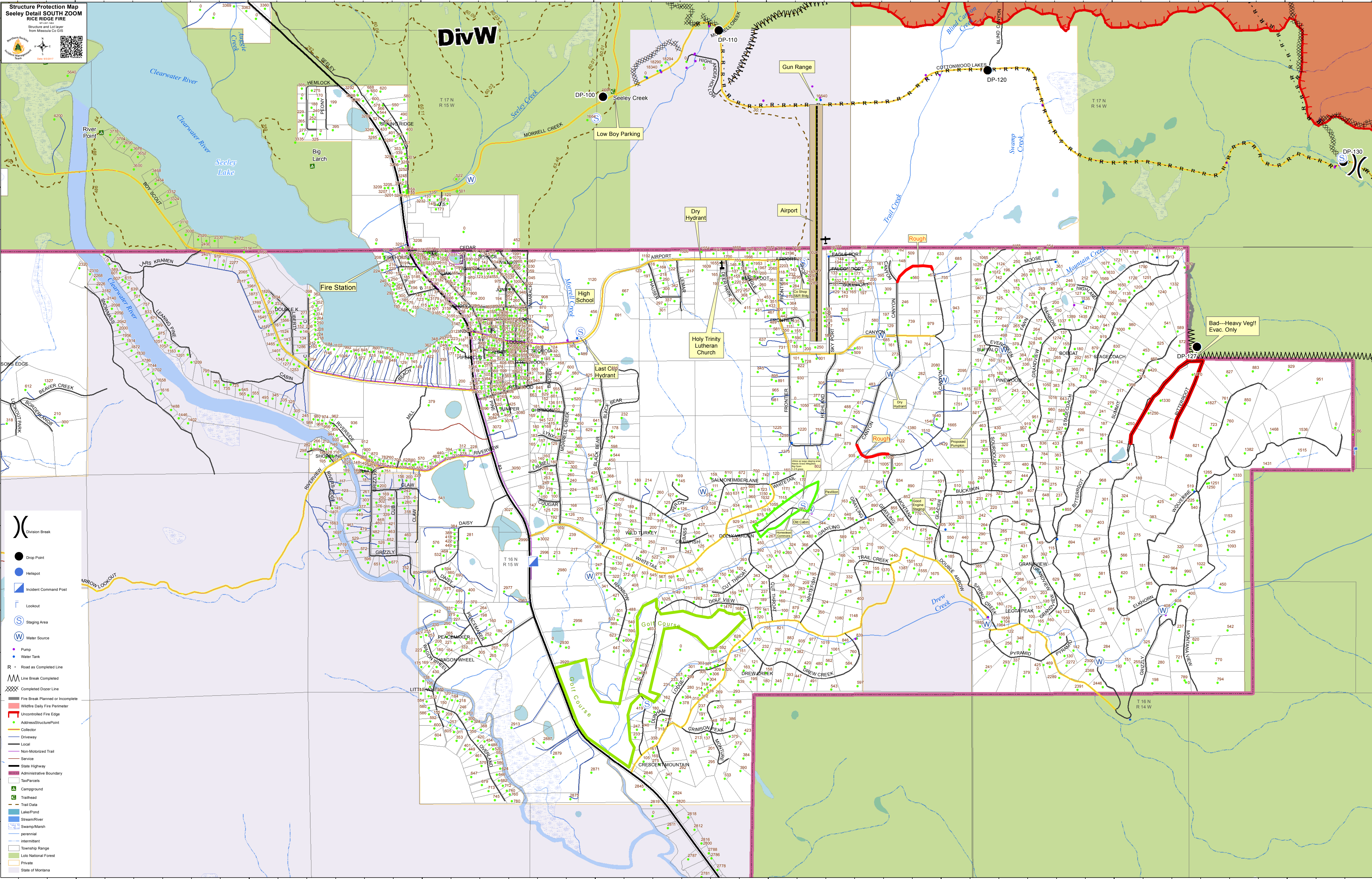


Structure Protection Map
 Seeley Detail SOUTH ZOOM
 RICE RIDGE FIRE

Structure and lot layer
 from Missoula Co GIS

DivW



- Division Break
- Drop Point
- Heliport
- Incident Command Post
- Lookout
- Staging Area
- Water Source
- Pump
- Water Tank
- Road as Completed Line
- Line Break Completed
- Completed Dozer Line
- Fire Break Planned or Incomplete
- Wildfire Daily Fire Perimeter
- Uncontrolled Fire Edge
- Address/Structure Point
- Collector
- Driveway
- Local
- Non-Motorized Trail
- Service
- State Highway
- Administrative Boundary
- Tax Parcels
- Campground
- Trailhead
- Trail Data
- Lake/Pond
- Stream/River
- Swamp/Marsh
- Intermittent
- Township Range
- Lolo National Forest
- Private
- State of Montana