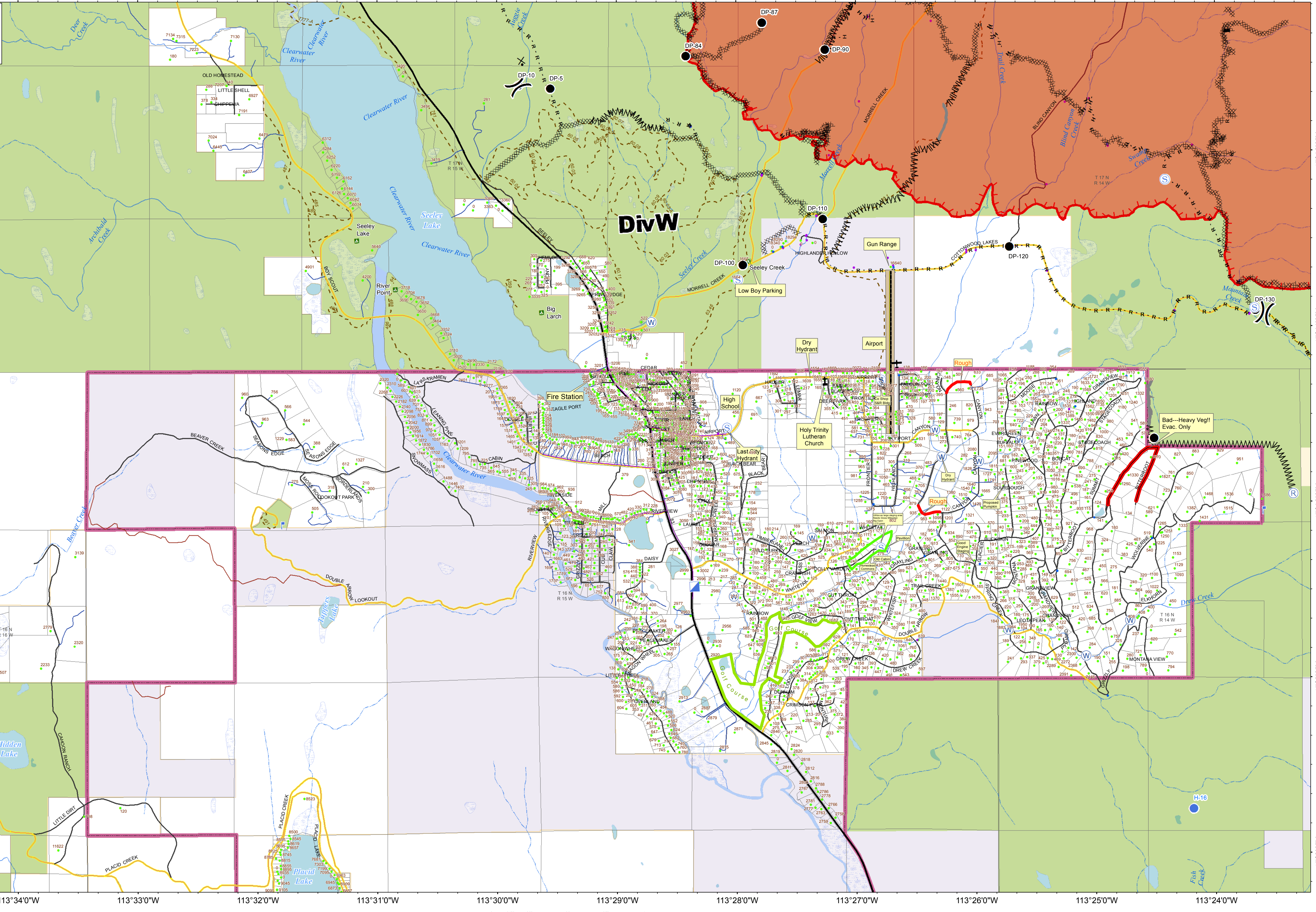


**Structure Protection Map**  
**Seeley Data SOUTH**  
 RICE RIDGE FIRE

Structure and lot layer  
 from Missoula Co GIS

- ( ) Division Break
- (R) Repeater
- Drop Point
- Helispot
- Incident Command Post
- Lookout
- (S) Staging Area
- (W) Water Source
- Pump
- Water Tank
- H - Completed Hand Line
- R - Road as Completed Line
- M - Line Break Completed
- XXX - Completed Dozer Line
- Proposed Dozer Line
- Fire Break Planned or Incomplete
- Planned Secondary Line
- Highlighted Manmade Feature
- Wildfire Daily Fire Perimeter
- Uncontrolled Fire Edge
- Address/Structure Point
- Collector
- Driveway
- Local
- Non-Motorized Trail
- Service
- State Highway
- Administrative Boundary
- Tax Parcels
- Campground
- Trailhead
- Trail Data
- Lake/Pond
- Stream/River
- Swamp/Marsh
- Wetland
- Township Range
- Bureau of Land Management
- Lolo National Forest
- Private
- State of Montana



47°12'00"N  
47°11'00"N  
47°10'00"N  
47°9'00"N  
47°8'00"N

47°12'00"N  
47°11'00"N  
47°10'00"N  
47°9'00"N  
47°8'00"N

113°34'0"W 113°33'0"W 113°32'0"W 113°31'0"W 113°30'0"W 113°29'0"W 113°28'0"W 113°27'0"W 113°26'0"W 113°25'0"W 113°24'0"W

