

Air Operations Map

RICE RIDGE FIRE

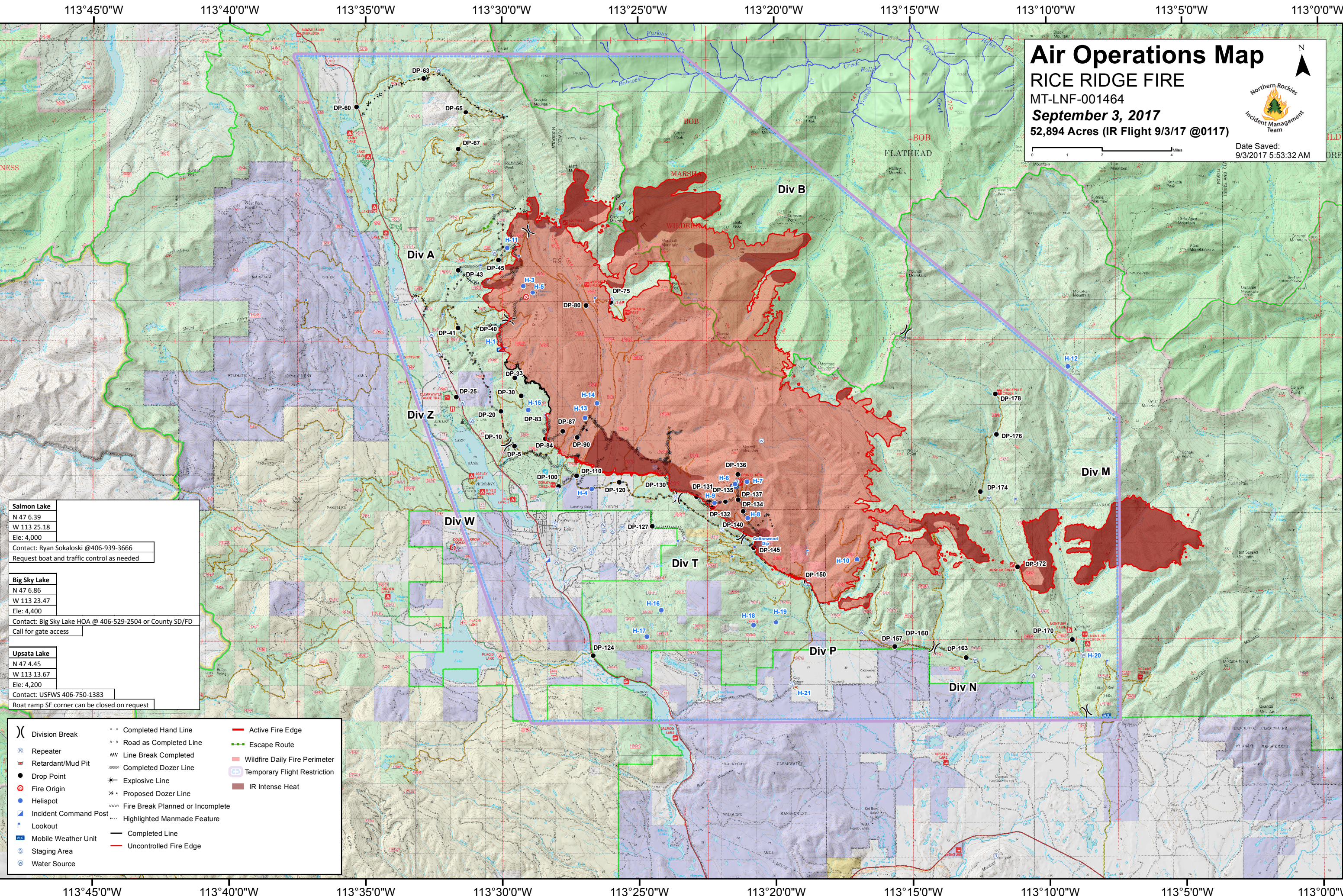
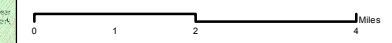
MT-LNF-001464

September 3, 2017

52,894 Acres (IR Flight 9/3/17 @0117)



Date Saved:
9/3/2017 5:53:32 AM



Salmon Lake
N 47 6.39
W 113 25.18
Ele: 4,000
Contact: Ryan Sokaloski @406-939-3666
Request boat and traffic control as needed

Big Sky Lake
N 47 6.86
W 113 23.47
Ele: 4,400
Contact: Big Sky Lake HOA @ 406-529-2504 or County SD/FD
Call for gate access

Upsata Lake
N 47 4.45
W 113 13.67
Ele: 4,200
Contact: USFWS 406-750-1383
Boat ramp SE corner can be closed on request

() Division Break	--- Completed Hand Line	— Active Fire Edge
(R) Repeater	--- Road as Completed Line	--- Escape Route
(M) Retardant/Mud Pit	--- Line Break Completed	--- Wildfire Daily Fire Perimeter
(D) Drop Point	--- Completed Dozer Line	--- Temporary Flight Restriction
(F) Fire Origin	--- Explosive Line	--- IR Intense Heat
(H) Helispot	--- Proposed Dozer Line	
(IC) Incident Command Post	--- Fire Break Planned or Incomplete	
(L) Lookout	--- Highlighted Manmade Feature	
(MW) Mobile Weather Unit	--- Completed Line	
(S) Staging Area	--- Uncontrolled Fire Edge	
(W) Water Source		