

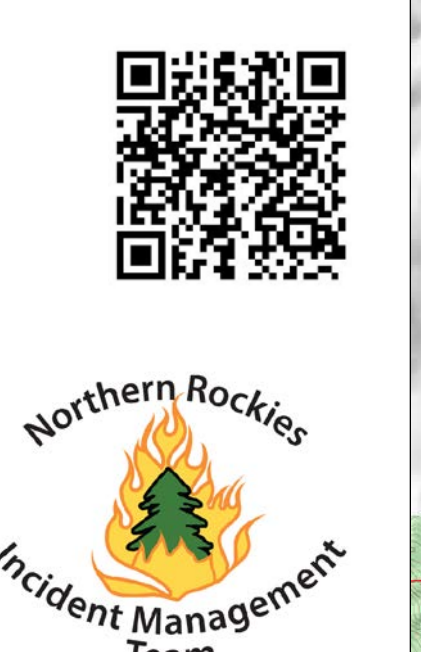
Air Operations Map

RICE RIDGE FIRE

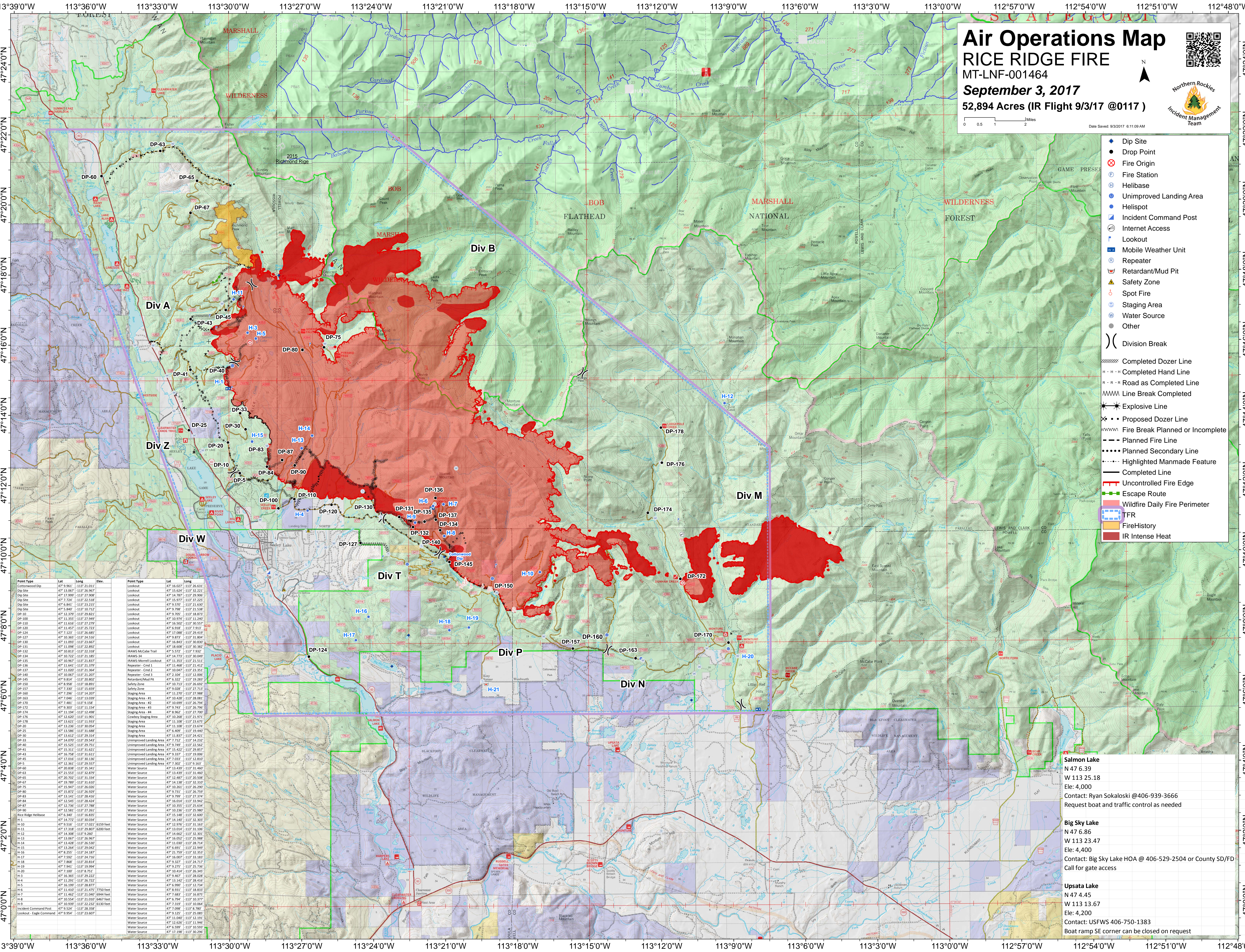
MT-LNF-001464

September 3, 2017

52,894 Acres (IR Flight 9/3/17 @0117)



Scale: 0 0.5 1 2 Miles
Date Saved: 9/3/17 6:11:09 AM



- Dip Site
 - Drop Point
 - ⊗ Fire Origin
 - Ⓜ Fire Station
 - Ⓜ Helibase
 - Ⓜ Unimproved Landing Area
 - Ⓜ Helispot
 - Ⓜ Incident Command Post
 - Ⓜ Internet Access
 - Ⓜ Lookout
 - Ⓜ Mobile Weather Unit
 - Ⓜ Repeater
 - Ⓜ Retardant/Mud Pit
 - Ⓜ Safety Zone
 - Ⓜ Spot Fire
 - Ⓜ Staging Area
 - Ⓜ Water Source
 - Other
- ⎓ Division Break
- Ⓜ Completed Dozer Line
- Ⓜ Completed Hand Line
- Ⓜ Road as Completed Line
- Ⓜ Line Break Completed
- Ⓜ Explosive Line
- Ⓜ Proposed Dozer Line
- Ⓜ Fire Break Planned or Incomplete
- Ⓜ Planned Fire Line
- Ⓜ Planned Secondary Line
- Ⓜ Highlighted Manmade Feature
- Ⓜ Completed Line
- Ⓜ Uncontrolled Fire Edge
- Ⓜ Escape Route
- Ⓜ Wildfire Daily Fire Perimeter
- Ⓜ TFR
- Ⓜ Fire History
- Ⓜ IR Intense Heat

Point Type	Lat	Long	Elev.	Point Type	Lat	Long	Elev.
Contourline Dip	47° 9.961'	-113° 21.011'		Lookout	47° 16.027'	-113° 26.631'	
Dip Site	47° 11.620'	-113° 26.967'		Lookout	47° 16.624'	-113° 22.221'	
Dip Site	47° 13.999'	-113° 27.908'		Lookout	47° 14.787'	-113° 29.906'	
Dip Site	47° 7.724'	-113° 22.518'		Lookout	47° 15.977'	-113° 27.227'	
Dip Site	47° 6.941'	-113° 23.215'		Lookout	47° 9.720'	-113° 24.636'	
Dip Site	47° 5.840'	-113° 10.712'		Lookout	47° 9.798'	-113° 21.534'	
Dip Site	47° 12.379'	-113° 29.821'		Lookout	47° 9.705'	-113° 18.874'	
Dip Site	47° 11.950'	-113° 27.969'		Lookout	47° 9.876'	-113° 14.266'	
Dip Site	47° 11.616'	-113° 27.279'		Lookout	47° 16.500'	-113° 30.557'	
Dip Site	47° 11.427'	-113° 26.723'		Lookout	47° 9.918'	-113° 21.823'	
Dip Site	47° 11.123'	-113° 26.085'		Lookout	47° 17.088'	-113° 20.415'	
Dip Site	47° 10.365'	-113° 24.516'		Lookout	47° 9.879'	-113° 31.804'	
Dip Site	47° 11.093'	-113° 23.667'		Lookout	47° 16.808'	-113° 30.832'	
Dip Site	47° 11.098'	-113° 22.892'		Lookout	47° 18.608'	-113° 30.382'	
Dip Site	47° 10.813'	-113° 22.318'		IRAWS McCabe Trail	47° 6.572'	-113° 7.932'	
Dip Site	47° 10.722'	-113° 21.185'		IRAWS McCabe Trail	47° 16.770'	-113° 26.860'	
Dip Site	47° 10.967'	-113° 21.837'		IRAWS Murrell Lookout	47° 11.353'	-113° 21.511'	
Dip Site	47° 11.641'	-113° 21.379'		Repeater - Cnd 1	47° 11.466'	-113° 21.412'	
Dip Site	47° 11.020'	-113° 21.364'		Repeater - Cnd 2	47° 10.047'	-113° 21.813'	
Dip Site	47° 10.027'	-113° 21.207'		Repeater - Cnd 3	47° 2.104'	-113° 12.006'	
Dip Site	47° 9.914'	-113° 20.802'		Retardant/Mud Pit	47° 6.522'	-113° 19.283'	
Dip Site	47° 9.958'	-113° 18.893'		Safety Zone	47° 10.714'	-113° 26.860'	
Dip Site	47° 7.130'	-113° 15.659'		Safety Zone	47° 9.028'	-113° 27.713'	
Dip Site	47° 7.296'	-113° 14.207'		Staging Area #1	47° 11.270'	-113° 27.088'	
Dip Site	47° 7.046'	-113° 13.039'		Staging Area #2	47° 10.699'	-113° 26.794'	
Dip Site	47° 7.481'	-113° 9.158'		Staging Area #3	47° 9.782'	-113° 26.796'	
Dip Site	47° 7.307'	-113° 11.154'		Staging Area #4	47° 9.962'	-113° 27.700'	
Dip Site	47° 11.194'	-113° 12.498'		Cowboy Staging Area	47° 10.268'	-113° 21.971'	
Dip Site	47° 12.620'	-113° 11.901'		Staging Area	47° 11.108'	-113° 23.674'	
Dip Site	47° 11.423'	-113° 10.923'		Staging Area	47° 6.409'	-113° 19.440'	
Dip Site	47° 13.236'	-113° 30.054'		Staging Area	47° 13.824'	-113° 24.421'	
Dip Site	47° 13.586'	-113° 31.688'		Unimproved Landing Area	47° 7.712'	-113° 14.232'	
Dip Site	47° 13.612'	-113° 29.314'		Unimproved Landing Area	47° 9.769'	-113° 22.262'	
Dip Site	47° 14.070'	-113° 29.543'		Unimproved Landing Area	47° 15.422'	-113° 28.824'	
Dip Site	47° 15.525'	-113° 29.751'		Unimproved Landing Area	47° 9.337'	-113° 19.006'	
Dip Site	47° 15.311'	-113° 31.621'		Unimproved Landing Area	47° 7.033'	-113° 12.810'	
Dip Site	47° 16.758'	-113° 31.611'		Unimproved Landing Area	47° 7.302'	-113° 14.957'	
Dip Site	47° 17.016'	-113° 30.196'		Water Source	47° 13.439'	-113° 31.467'	
Dip Site	47° 12.261'	-113° 25.527'		Water Source	47° 13.839'	-113° 31.460'	
Dip Site	47° 20.838'	-113° 35.341'		Water Source	47° 10.440'	-113° 26.566'	
Dip Site	47° 21.533'	-113° 32.879'		Water Source	47° 14.138'	-113° 32.310'	
Dip Site	47° 7.700'	-113° 18.134'		Water Source	47° 10.261'	-113° 26.290'	
Dip Site	47° 19.789'	-113° 31.610'		Water Source	47° 9.711'	-113° 26.794'	
Dip Site	47° 15.947'	-113° 26.020'		Water Source	47° 9.799'	-113° 27.374'	
Dip Site	47° 14.872'	-113° 24.829'		Water Source	47° 11.842'	-113° 18.947'	
Dip Site	47° 13.141'	-113° 28.416'		Water Source	47° 10.355'	-113° 25.634'	
Dip Site	47° 14.544'	-113° 28.434'		Water Source	47° 10.230'	-113° 25.980'	
Dip Site	47° 12.736'	-113° 27.785'		Water Source	47° 15.146'	-113° 23.600'	
Dip Site	47° 12.581'	-113° 27.261'		Water Source	47° 14.140'	-113° 32.303'	
Dip Site	47° 14.340'	-113° 31.835'		Water Source	47° 12.970'	-113° 31.167'	
Dip Site	47° 14.772'	-113° 30.034'		Water Source	47° 15.014'	-113° 31.096'	
Dip Site	47° 9.516'	-113° 17.021'	6159 feet	Water Source	47° 14.667'	-113° 32.301'	
Dip Site	47° 13.138'	-113° 29.807'	6200 feet	Water Source	47° 9.425'	-113° 25.726'	
Dip Site	47° 14.308'	-113° 9.360'		Water Source	47° 10.814'	-113° 26.845'	
Dip Site	47° 13.067'	-113° 26.967'		Water Source	47° 9.467'	-113° 28.028'	
Dip Site	47° 11.426'	-113° 26.530'		Water Source	47° 11.147'	-113° 24.816'	
Dip Site	47° 11.264'	-113° 29.042'		Water Source	47° 6.990'	-113° 12.734'	
Dip Site	47° 8.255'	-113° 24.187'		Water Source	47° 9.931'	-113° 18.833'	
Dip Site	47° 7.992'	-113° 24.786'		Water Source	47° 11.083'	-113° 18.877'	
Dip Site	47° 7.941'	-113° 19.994'		Water Source	47° 6.794'	-113° 30.372'	
Dip Site	47° 10.810'	-113° 8.751'		Water Source	47° 3.319'	-113° 10.064'	
Dip Site	47° 16.365'	-113° 29.222'		Water Source	47° 11.086'	-113° 18.780'	
Dip Site	47° 16.291'	-113° 26.722'		Water Source	47° 9.125'	-113° 25.085'	
Dip Site	47° 16.199'	-113° 28.877'		Water Source	47° 11.040'	-113° 12.191'	
Dip Site	47° 11.410'	-113° 21.475'	7750 feet	Water Source	47° 6.599'	-113° 10.593'	
Dip Site	47° 11.462'	-113° 21.067'	6944 feet	Water Source	47° 17.196'	-113° 30.296'	
Dip Site	47° 10.554'	-113° 21.010'	6467 feet				
Dip Site	47° 10.939'	-113° 22.232'	6130 feet				
Dip Site	47° 11.534'	-113° 21.308'					
Dip Site	47° 9.954'	-113° 23.607'					

Salmon Lake
N 47 6.39
W 113 25.18
Elev: 4,000
Contact: Ryan Sokaloski @406-939-3666
Request boat and traffic control as needed

Big Sky Lake
N 47 6.86
W 113 23.47
Elev: 4,400
Contact: Big Sky Lake HOA @ 406-529-2504 or County SD/FD
Call for gate access

Upsata Lake
N 47 4.45
W 113 13.67
Elev: 4,200
Contact: USFWS 406-750-1383
Boat ramp SE corner can be closed on request