

Operations Map

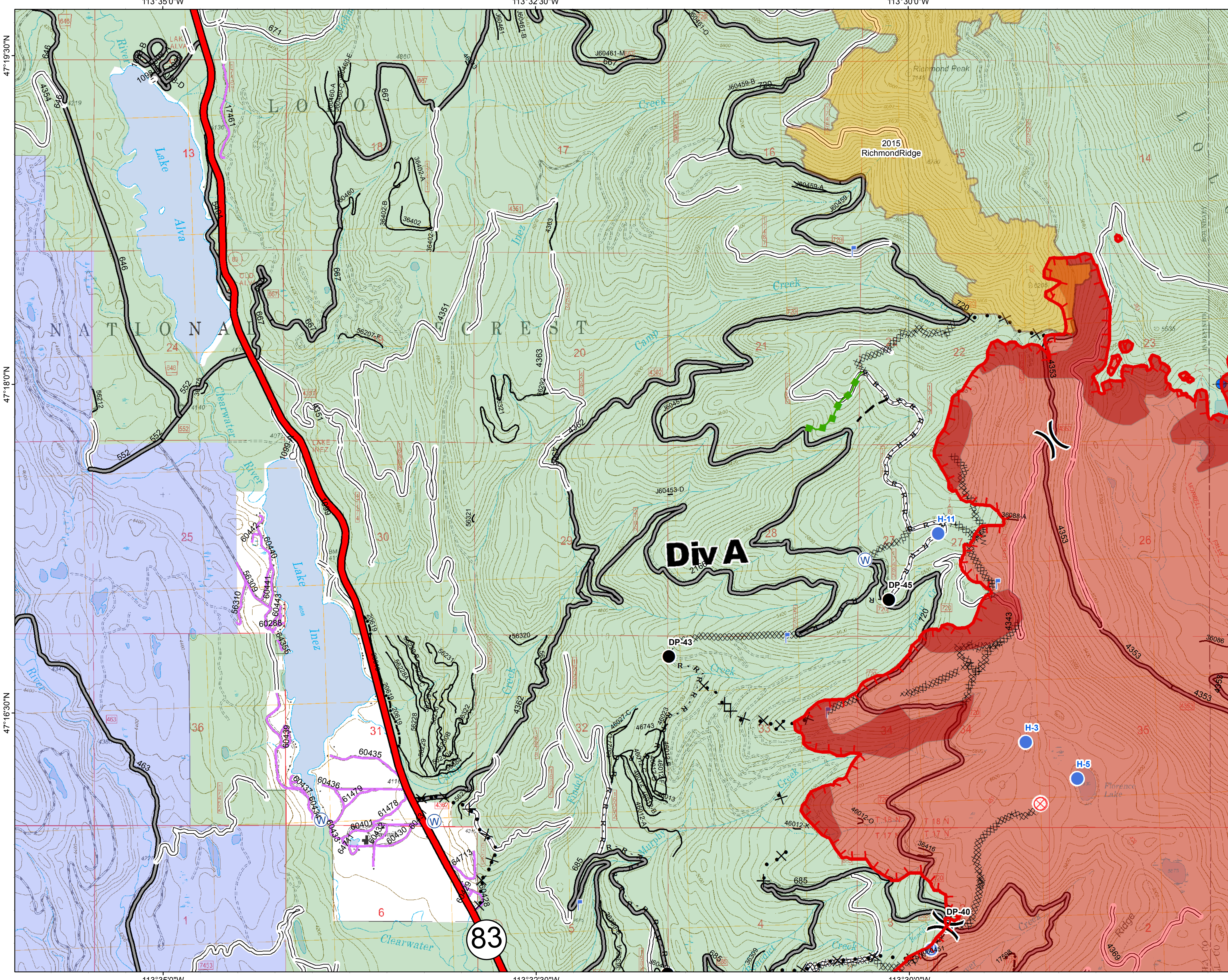
DIV A

Rice Ridge Fire

MT-LNF-001464

September 3, 2017

52,894 Acres (IR Flight 9/3/17 @0117)



- () Division Break
- ⊕ Dip Site
- Drop Point
- ⊗ Fire Origin
- ⊕ Unimproved Landing Area
- Helispot
- ⊕ Lookout
- ⊕ Water Source
- ⊕ Uncontrolled Fire Edge
- R · R · Road as Completed Line
- ⊗ Completed Dozer Line
- ⊗ Proposed Dozer Line
- ⊕ Fire Break Planned or Incomplete
- ⊕ Planned Fire Line
- ⊕ Escape Route
- ⊕ Forest Service Undetermined
- ⊕ Interstate and Highways
- Forest Service System Roads
 - 1 - BASIC(CLOSED); 2 - HIGH CLEARANCE
 - 3 - PASSENGER CARS; 4 - MODERATE COMFORT; 5 - HIGH COMFORT
- ⊕ Private Roads
- ⊕ County
- ⊕ Plum Creek Roads
- ⊕ Short Term Spec Roads
- ⊕ Fire Perimeter
- ⊕ IR Intense Heat
- ⊕ Fire History
- ⊕ Montana Fish, Wildlife, and Parks
- ⊕ US Forest Service

Northern Rockies
Incident Management
Team

0 0.25 0.5 1 Miles