

Operations Map

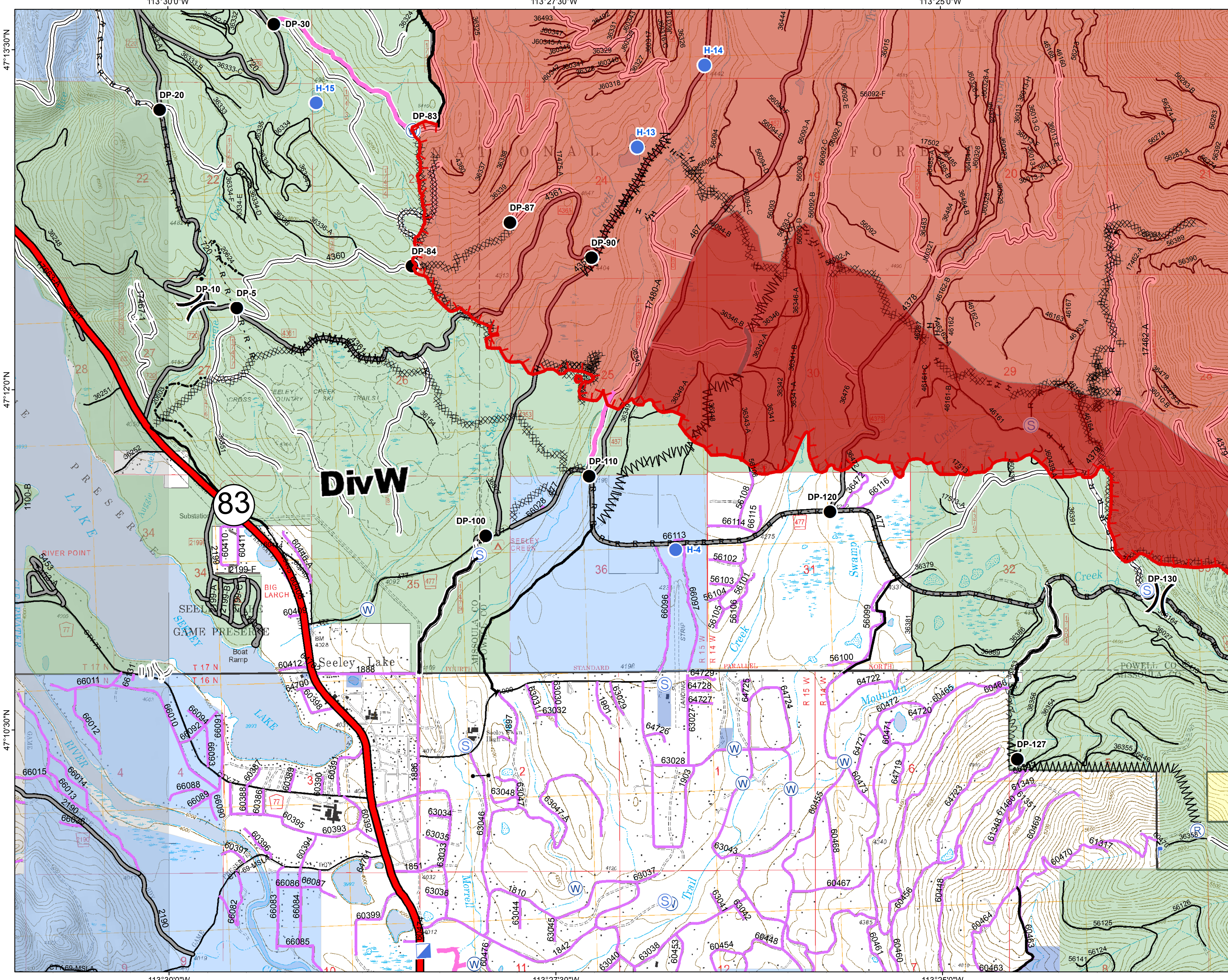
DIV W

Rice Ridge Fire

MT-LNF-001464

September 3, 2017

52,894 Acres (IR Flight 9/3/17 @0117)



- (X) Division Break
- (R) Repeater
- (D) Dip Site
- (●) Drop Point
- (H) Helispot
- (I) Incident Command Post
- (L) Lookout
- (S) Staging Area
- (W) Water Source
- (G) Gate - No through Access
- (T) Turn Around Area
- (—) Completed Line
- (=) Uncontrolled Fire Edge
- (H · H) Completed Hand Line
- (R · R) Road as Completed Line
- (M) Line Break Completed
- (X · X · X) Completed Dozer Line
- (X · · ·) Proposed Dozer Line
- (---) Fire Break Planned or Incomplete
- (---) Highlighted Manmade Feature
- (---) Clipper Line
- (---) Forest Service Undetermined
- (---) Other Road
- (=) Interstate and Highways
- Forest Service System Roads**
- (---) 1 - BASIC(CLOSED); 2 - HIGH CLEARANCE
- (---) 3 - PASSENGER CARS; 4 - MODERATE COMFORT; 5 - HIGH COMFORT
- (---) Private Roads
- (---) County
- (---) Plum Creek Roads
- (---) Short Term Spec Roads
- (---) Fire Perimeter
- (---) IR Intense Heat
- (---) County Government
- (---) Montana State Trust Lands
- (---) US Bureau of Land Management
- (---) US Forest Service