

Operations Map

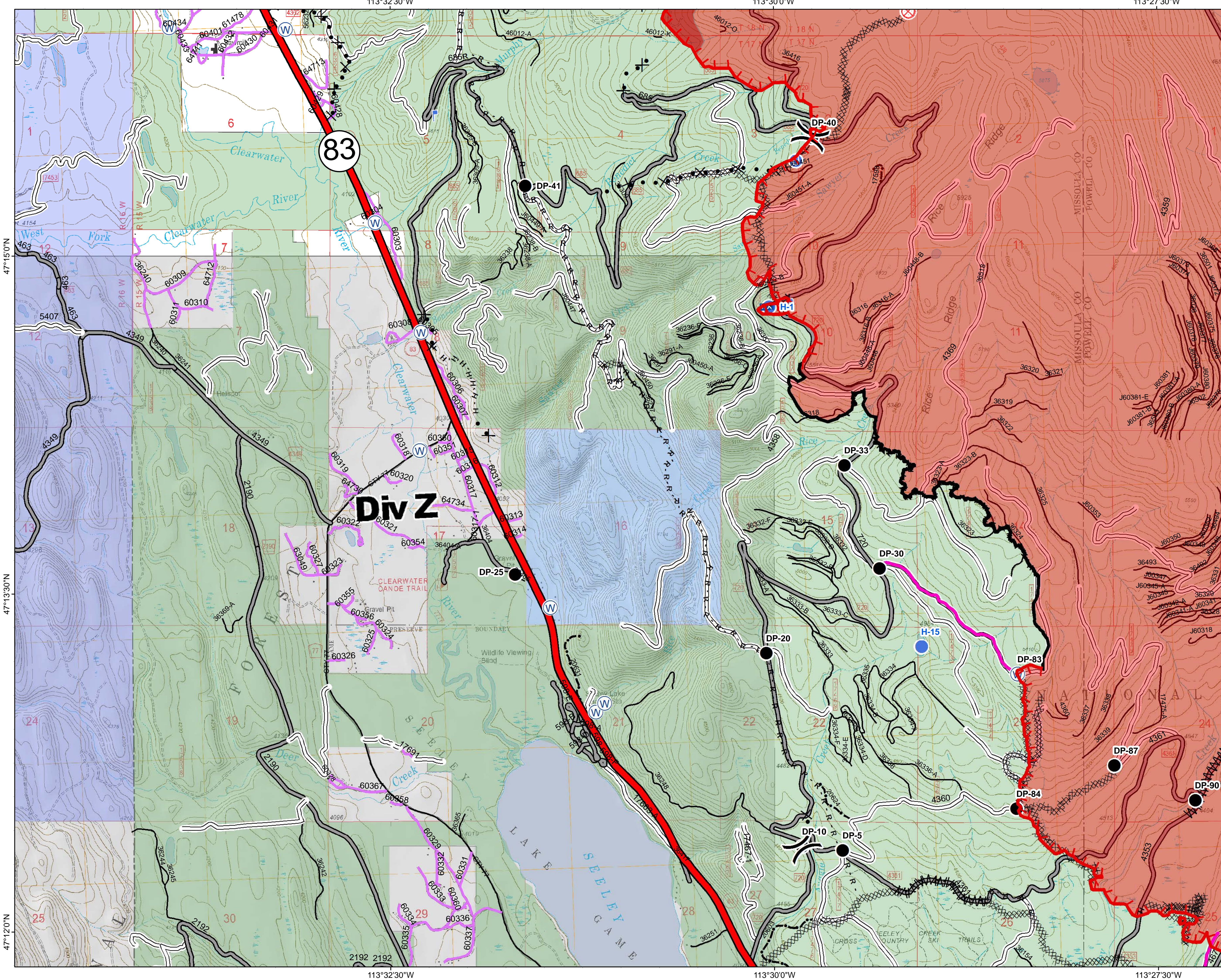
DIV Z

Rice Ridge Fire

MT-LNF-001464

September 3, 2017

52,894 Acres (IR Flight 9/3/17 @0117)



- () Division Break
- Drop Point
- ⊙ Fire Origin
- ⊕ Unimproved Landing Area
- ⊙ Helispot
- ⊕ Lookout
- ⊕ Mobile Weather Unit
- ⊕ Water Source
- Completed Line
- Uncontrolled Fire Edge
- H · H · Completed Hand Line
- R · R · Road as Completed Line
- Line Break Completed
- ⊗ Completed Dozer Line
- ⊗ Proposed Dozer Line
- Clipper Line
- Forest Service Undetermined
- Other Road
- Interstate and Highways
- Forest Service System Roads**
- 1 - BASIC(CLOSED); 2 - HIGH CLEARANCE
- 3 - PASSENGER CARS; 4 - MODERATE COMFORT; 5 - HIGH COMFORT
- Private Roads
- County
- Plum Creek Roads
- Short Term Spec Roads
- Fire Perimeter
- IR Intense Heat
- Montana Fish, Wildlife, and Parks
- Montana State Trust Lands
- US Forest Service

