

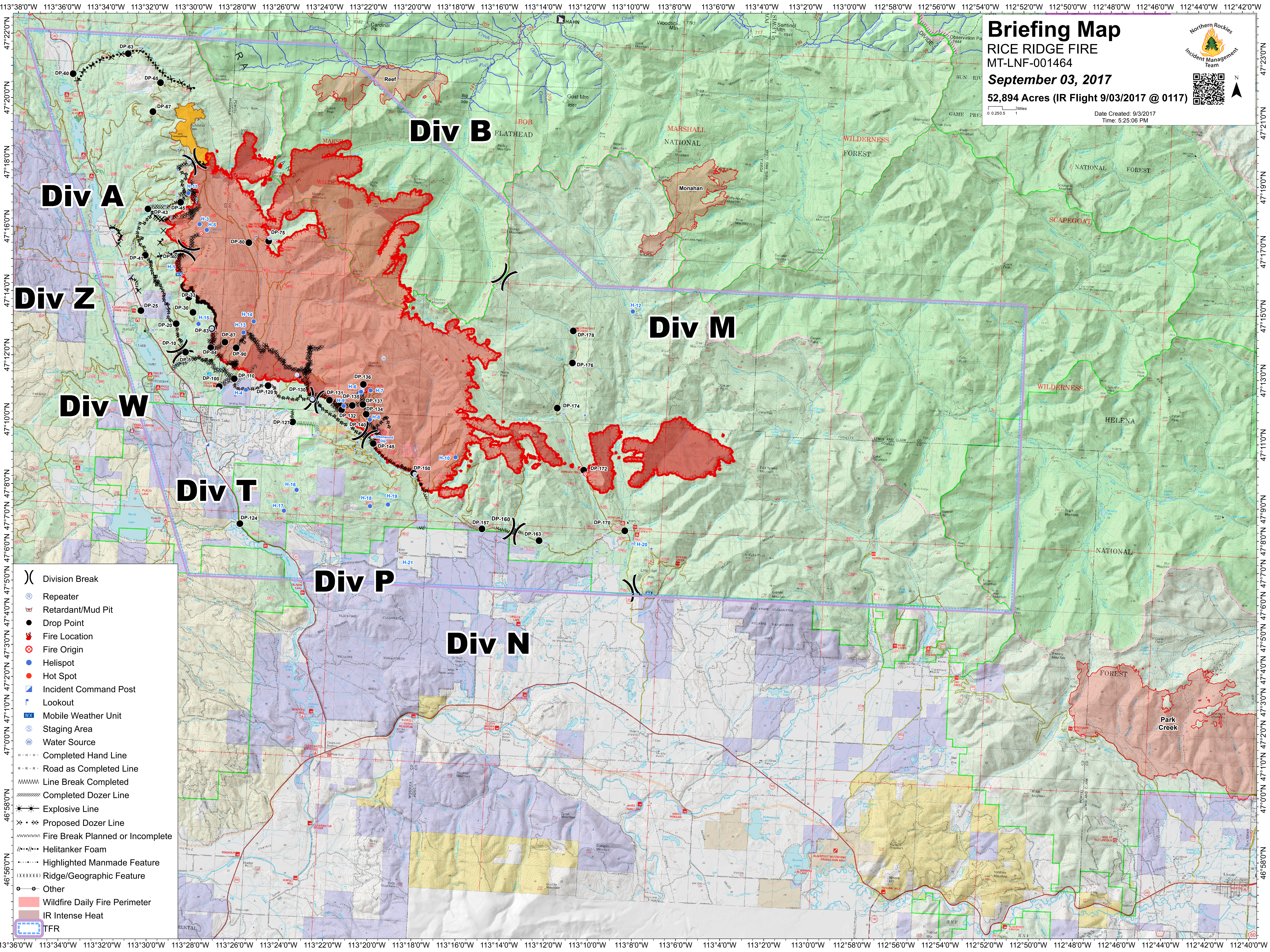
Briefing Map

RICE RIDGE FIRE
MT-LNF-001464

September 03, 2017

52,894 Acres (IR Flight 9/03/2017 @ 0117)

Date Created: 9/3/2017
Time: 5:25:06 PM



Div A

Div B

Div M

Div Z

Div W

Div T

Div P

Div N

- () Division Break
- (R) Repeater
- (M) Retardant/Mud Pit
- (●) Drop Point
- (F) Fire Location
- (X) Fire Origin
- (●) Helispot
- (●) Hot Spot
- (I) Incident Command Post
- (L) Lookout
- (WX) Mobile Weather Unit
- (S) Staging Area
- (W) Water Source
- Completed Hand Line
- Road as Completed Line
- Line Break Completed
- Completed Dozer Line
- Explosive Line
- Proposed Dozer Line
- Fire Break Planned or Incomplete
- Helitanker Foam
- Highlighted Manmade Feature
- Ridge/Geographic Feature
- Other
- Wildfire Daily Fire Perimeter
- IR Intense Heat
- TFR