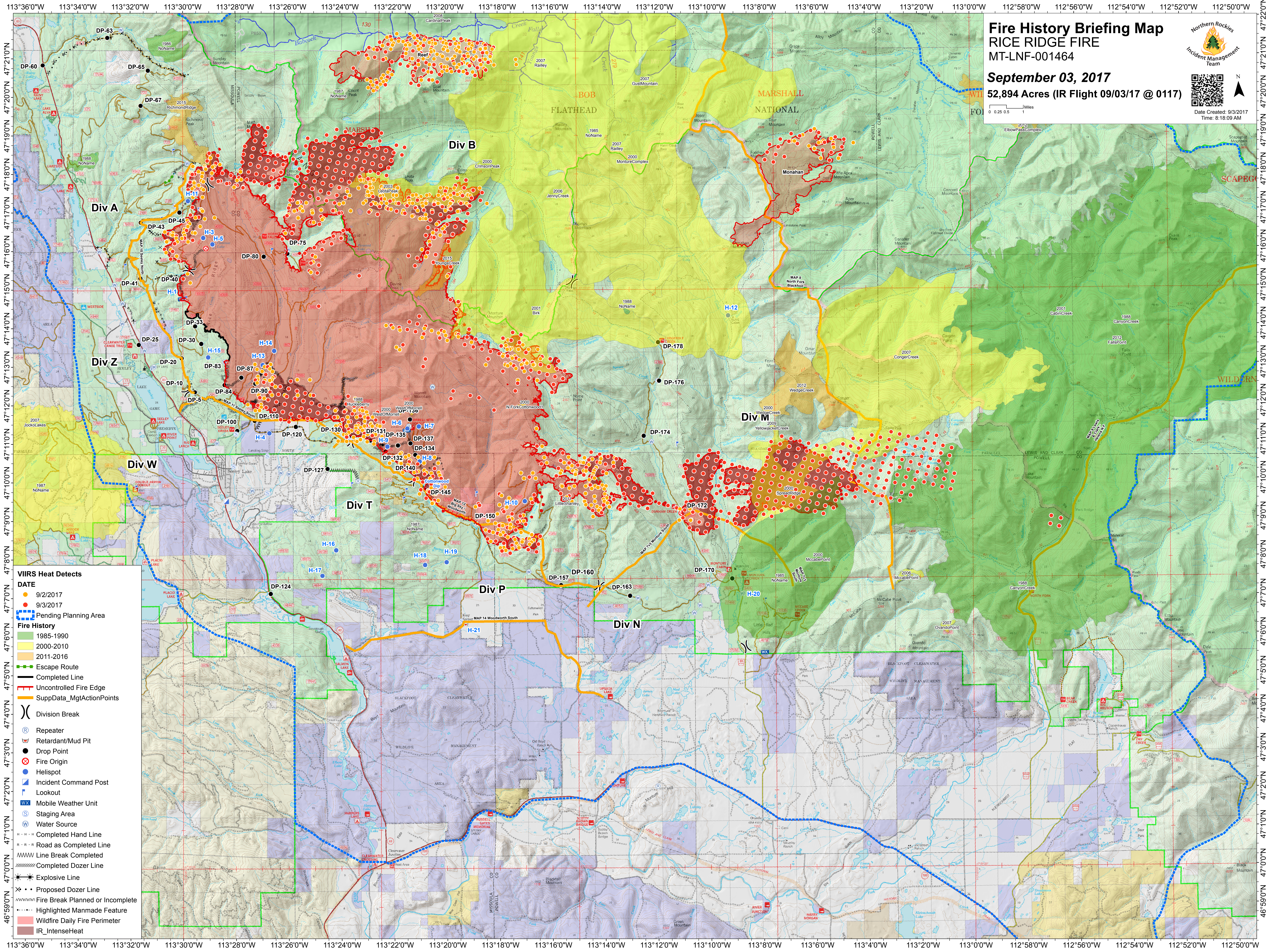


# Fire History Briefing Map

## RICE RIDGE FIRE

### MT-LNF-001464

**September 03, 2017**  
**52,894 Acres (IR Flight 09/03/17 @ 0117)**



- VIIRS Heat Detects**
- DATE
  - 9/2/2017
  - 9/3/2017
  - Pending Planning Area
- Fire History**
- 1985-1990
  - 2000-2010
  - 2011-2016
- Other Symbols**
- Escape Route
  - Completed Line
  - Uncontrolled Fire Edge
  - SuppData\_MgtActionPoints
  - ⎓ Division Break
  - Ⓡ Repeater
  - Ⓢ Retardant/Mud Pit
  - Drop Point
  - ⊗ Fire Origin
  - Ⓛ Helispot
  - Ⓜ Incident Command Post
  - Ⓛ Lookout
  - Ⓜ Mobile Weather Unit
  - Ⓜ Staging Area
  - Ⓜ Water Source
  - Completed Hand Line
  - Road as Completed Line
  - MWW Line Break Completed
  - Completed Dozer Line
  - Ⓜ Explosive Line
  - Ⓜ Proposed Dozer Line
  - Fire Break Planned or Incomplete
  - Highlighted Manmade Feature
  - Wildfire Daily Fire Perimeter
  - IR\_IntenseHeat