

Fire History Briefing Map

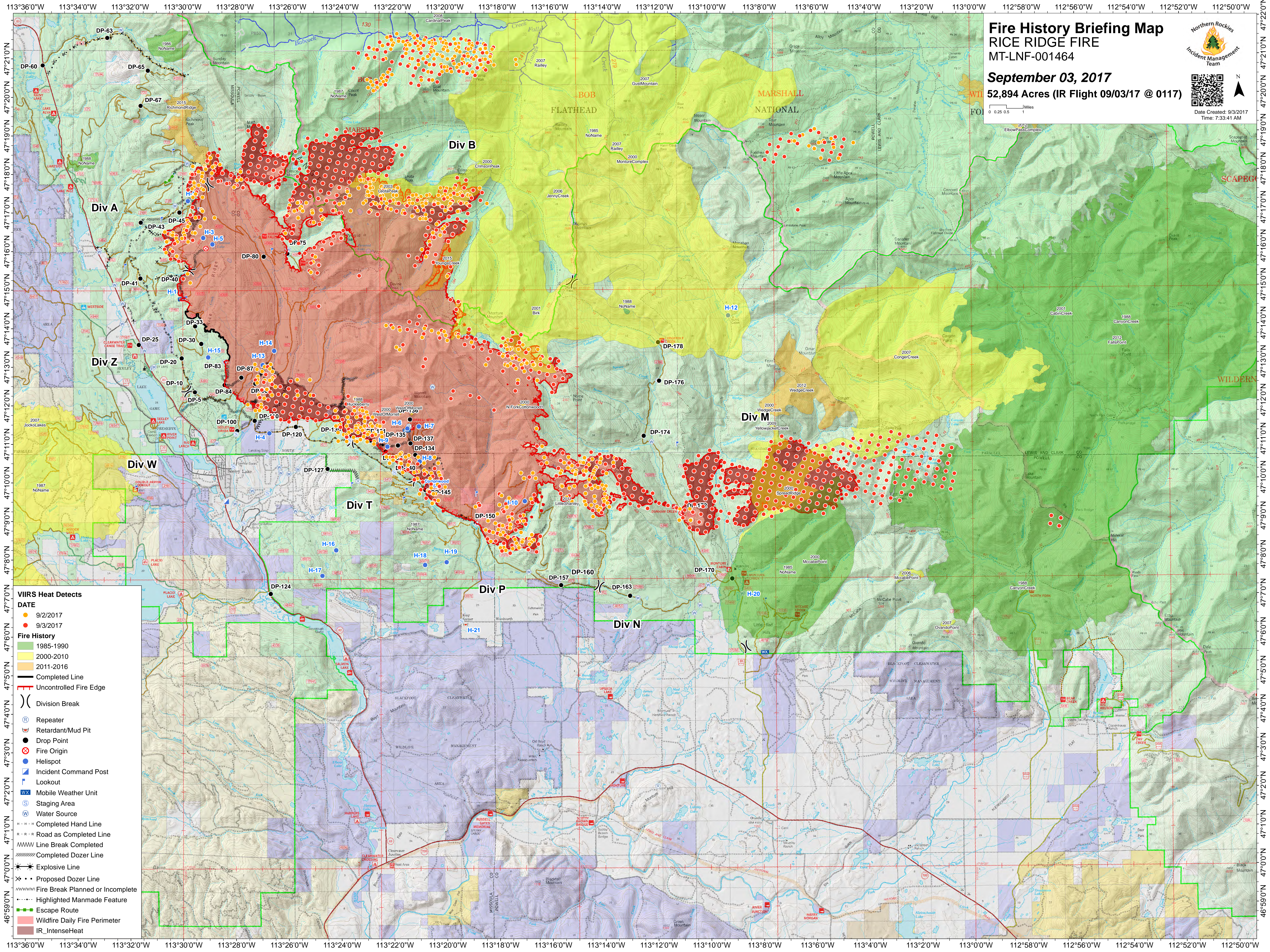
RICE RIDGE FIRE

MT-LNF-001464

September 03, 2017
52,894 Acres (IR Flight 09/03/17 @ 0117)



Date Created: 9/3/2017
 Time: 7:33:41 AM



- VIIRS Heat Detects**
- DATE**
- 9/2/2017
 - 9/3/2017
- Fire History**
- 1985-1990
 - 2000-2010
 - 2011-2016
- Operational Markers**
- Completed Line
 - Uncontrolled Fire Edge
 - ⎵ Division Break
 - Ⓡ Repeater
 - Ⓜ Retardant/Mud Pit
 - Drop Point
 - ⊗ Fire Origin
 - Helispot
 - Ⓜ Incident Command Post
 - Ⓜ Lookout
 - Ⓜ Mobile Weather Unit
 - Ⓜ Staging Area
 - Ⓜ Water Source
 - Completed Hand Line
 - Road as Completed Line
 - Line Break Completed
 - Completed Dozer Line
 - Explosive Line
 - Proposed Dozer Line
 - Fire Break Planned or Incomplete
 - Highlighted Manmade Feature
 - Escape Route
 - Wildfire Daily Fire Perimeter
 - IR_IntenseHeat