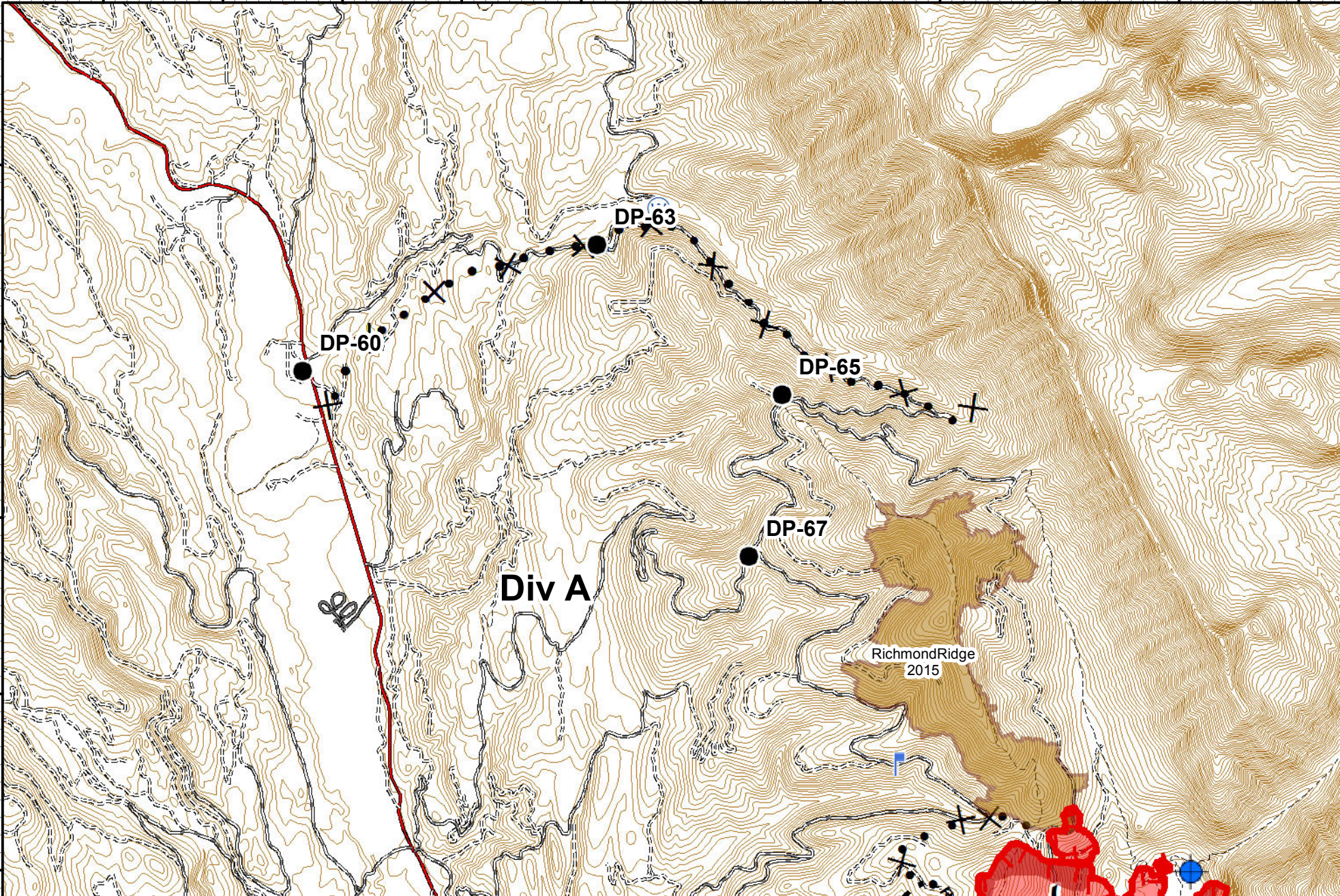


113°37'0"W 113°36'0"W 113°35'0"W 113°34'0"W 113°33'0"W 113°32'0"W 113°31'0"W 113°30'0"W 113°29'0"W 113°28'0"W 113°27'0"W

47°22'0"N
47°21'0"N
47°20'0"N
47°19'0"N
47°18'0"N

47°22'0"N
47°21'0"N
47°20'0"N
47°19'0"N
47°18'0"N



Incident Action Plan
Rice Ridge Fire
MAP 1

Northern Rockies
 Incident Management Team
 MT-LNF-001464
 09/03/2017
 Approx Acres 40,164
 0 0.5 1 Miles

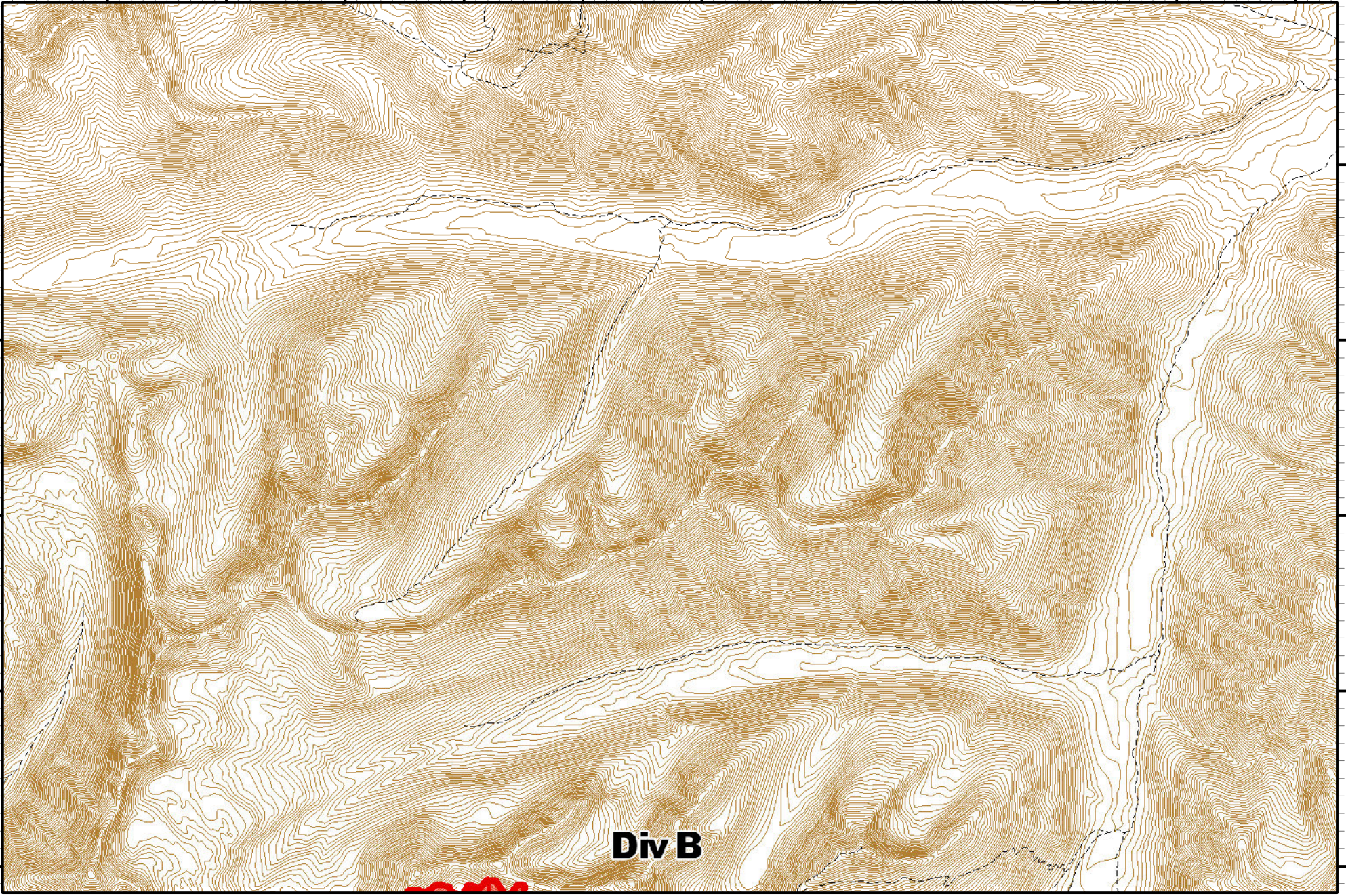


	Dip Site		Water Source	R -	Road as Completed Line		Uncontro... Fire Edge
	Drop Point		Division Break		Proposed Dozer Line		IR_Intens...
	Lookout		Planned Fire Line		Wildfire Daily Fire Perimeter		

113°26'0"W 113°25'0"W 113°24'0"W 113°23'0"W 113°22'0"W 113°21'0"W 113°20'0"W 113°19'0"W 113°18'0"W 113°17'0"W 113°16'0"W

47°22'0"N
47°21'0"N
47°20'0"N
47°19'0"N
47°18'0"N

47°22'0"N
47°21'0"N
47°20'0"N
47°19'0"N
47°18'0"N



Div B

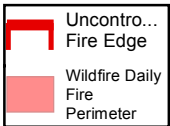
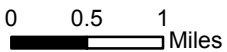
Incident Action Plan

Rice Ridge Fire

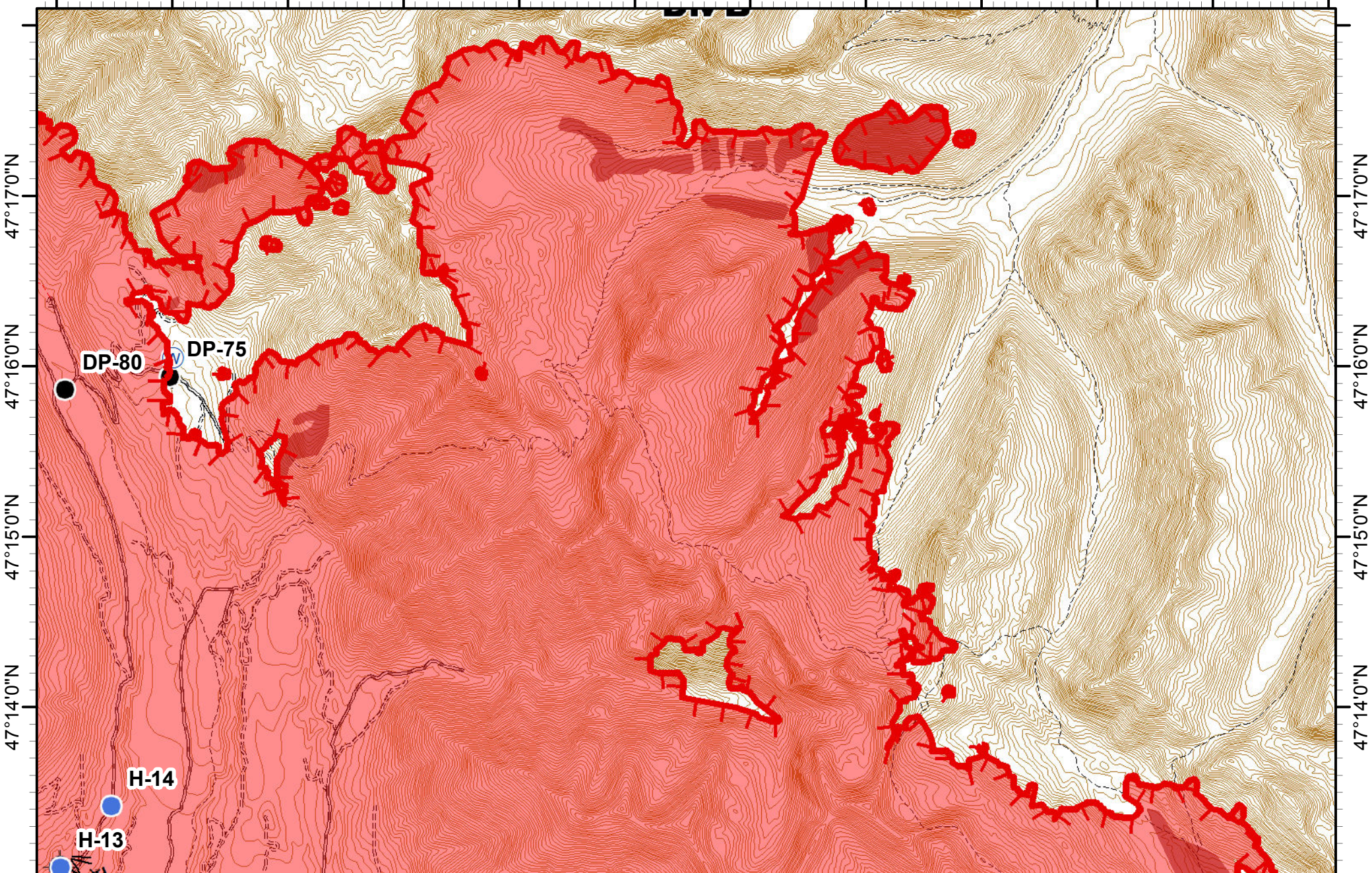
MAP 2

MT-LNF-001464
09/03/2017

Approx Acres 40,164



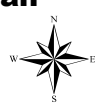
113°27'0"W 113°26'0"W 113°25'0"W 113°24'0"W 113°23'0"W 113°22'0"W 113°21'0"W 113°20'0"W 113°19'0"W 113°18'0"W 113°17'0"W 113°16'0"W



Incident Action Plan
Rice Ridge Fire
MAP 4

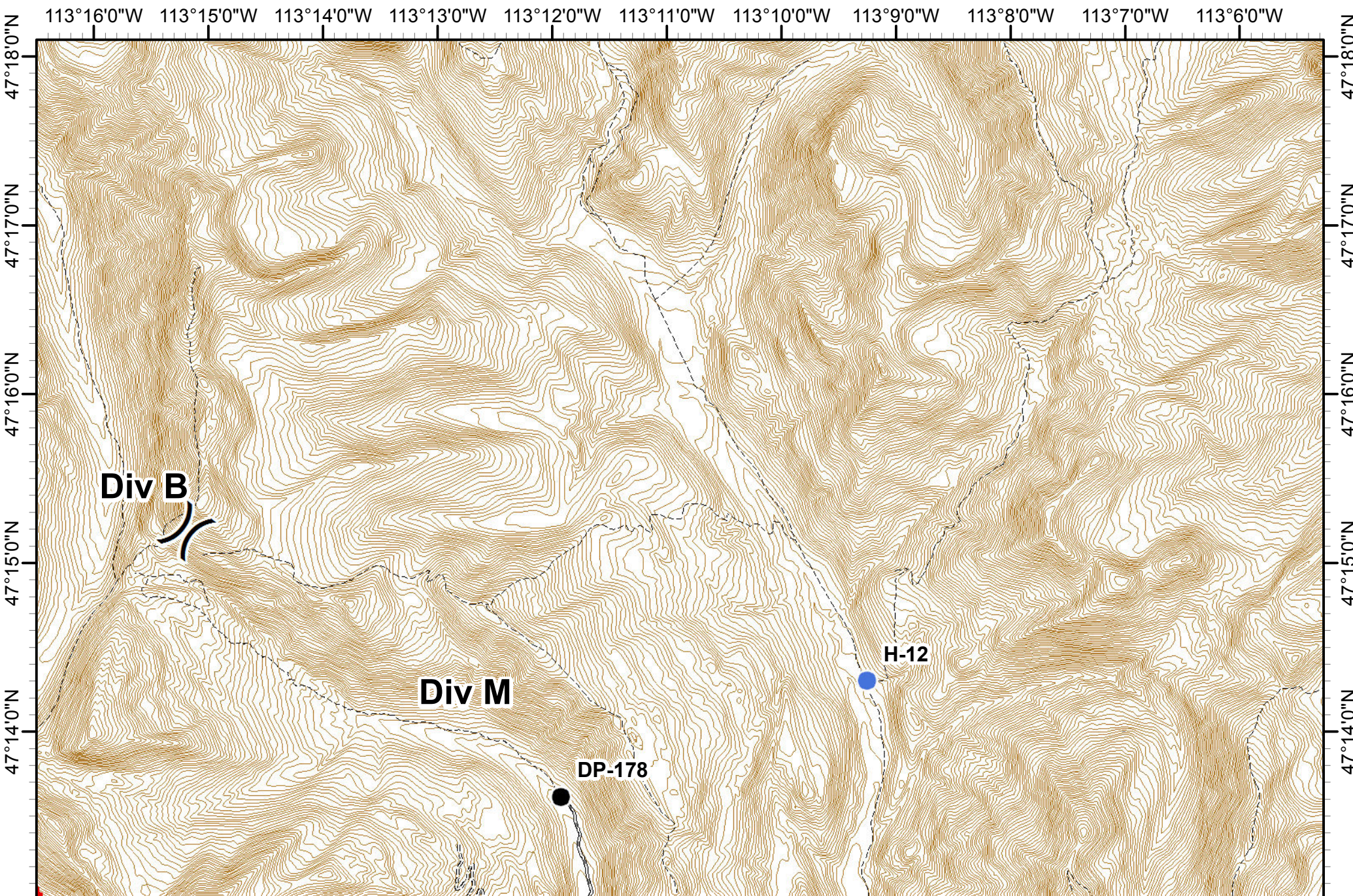
MT-LNF-001464
 09/03/2017
 Approx Acres 40,164

0 0.5 1 Miles



Dip Site	Lookout	Uncontro... Fire Edge
Drop Point	Water Source	IR_Intens...
Helispot	Completed Hand Line	Wildfire Daily Fire Perimeter
	Line Break Completed	





Incident Action Plan

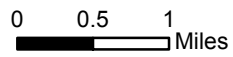
Rice Ridge Fire

MAP 5

MT-LNF-001464

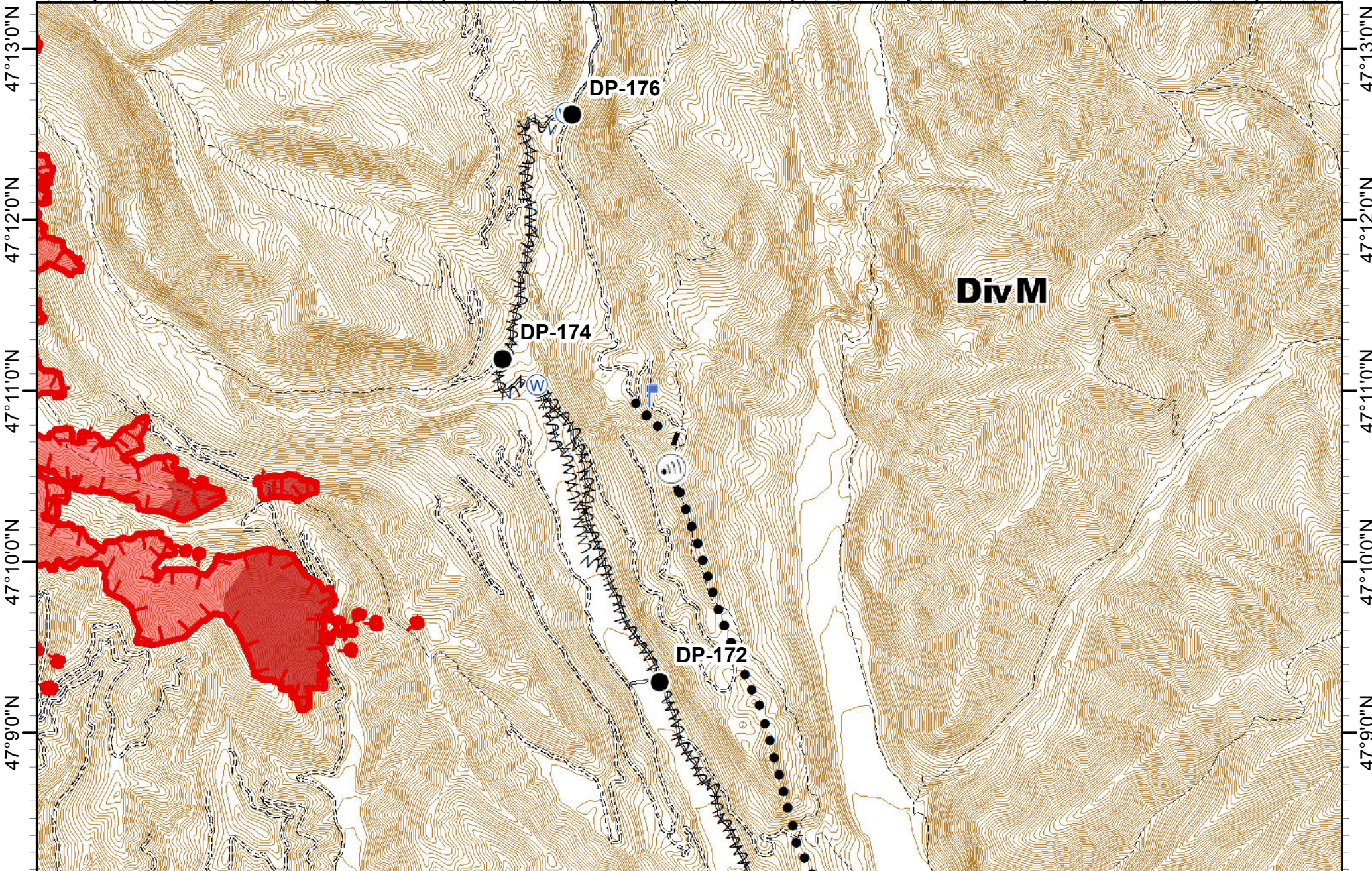
09/03/2017

Approx Acres 40,164



	Drop Point		Division Break		Wildfire Daily Fire Perimeter
	Helispot		Uncontro... Fire Edge		

113°16'0"W 113°15'0"W 113°14'0"W 113°13'0"W 113°12'0"W 113°11'0"W 113°10'0"W 113°9'0"W 113°8'0"W 113°7'0"W 113°6'0"W



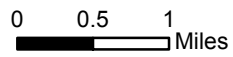
Incident Action Plan

Rice Ridge Fire

MAP 8

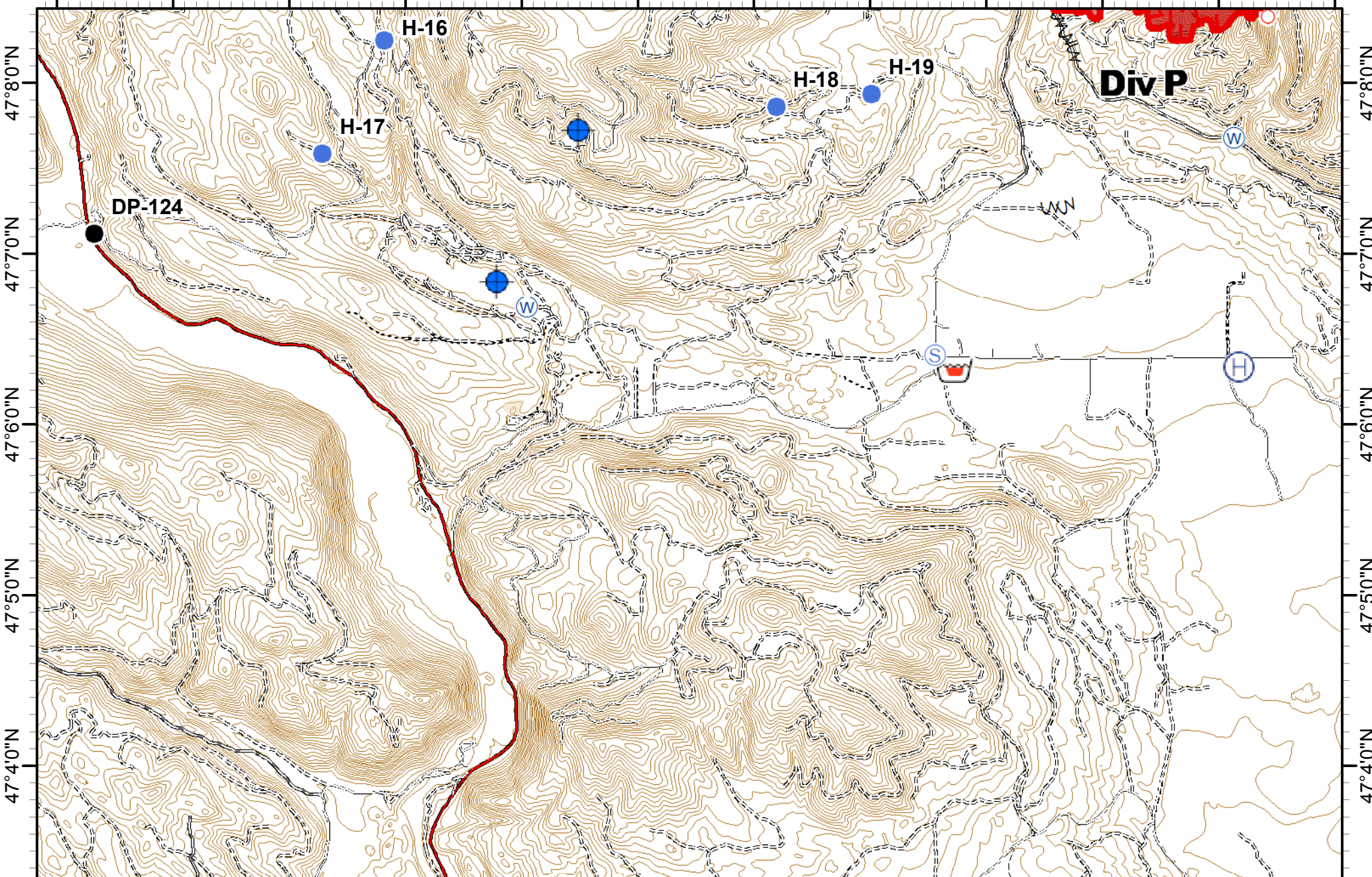
MT-LNF-001464
09/03/2017

Approx Acres 40,164



Drop Point	Lookout	Planned Fire Line	Wildfire Daily Fire Perimeter
Internet Access	Water Source	Planned Secondary Line	
Fire Break Planned or Incomplete	Uncontro... Fire Edge		
	IR_Intens...		

113°27'0"W 113°26'0"W 113°25'0"W 113°24'0"W 113°23'0"W 113°22'0"W 113°21'0"W 113°20'0"W 113°19'0"W 113°18'0"W 113°17'0"W 113°16'0"W



Incident Action Plan
Rice Ridge Fire
MAP 9

MT-LNF-001464
 09/03/2017
 Approx Acres 40,164

0 0.5 1 Miles

	Retardant/... Pit		Helibase		Staging Area		Fire Break Planned or Incomplete		Wildfire Daily Fire Perimeter
	Dip Site		Helispot		Water Source		Uncontro... Fire Edge		IR_Intens...
	Drop Point		Spot Fire		R - Road as Completed Line				

113°16'0"W 113°15'0"W 113°14'0"W 113°13'0"W 113°12'0"W 113°11'0"W 113°10'0"W 113°9'0"W 113°8'0"W 113°7'0"W 113°6'0"W

47°8'0"N

47°7'0"N

47°6'0"N

47°5'0"N

47°4'0"N

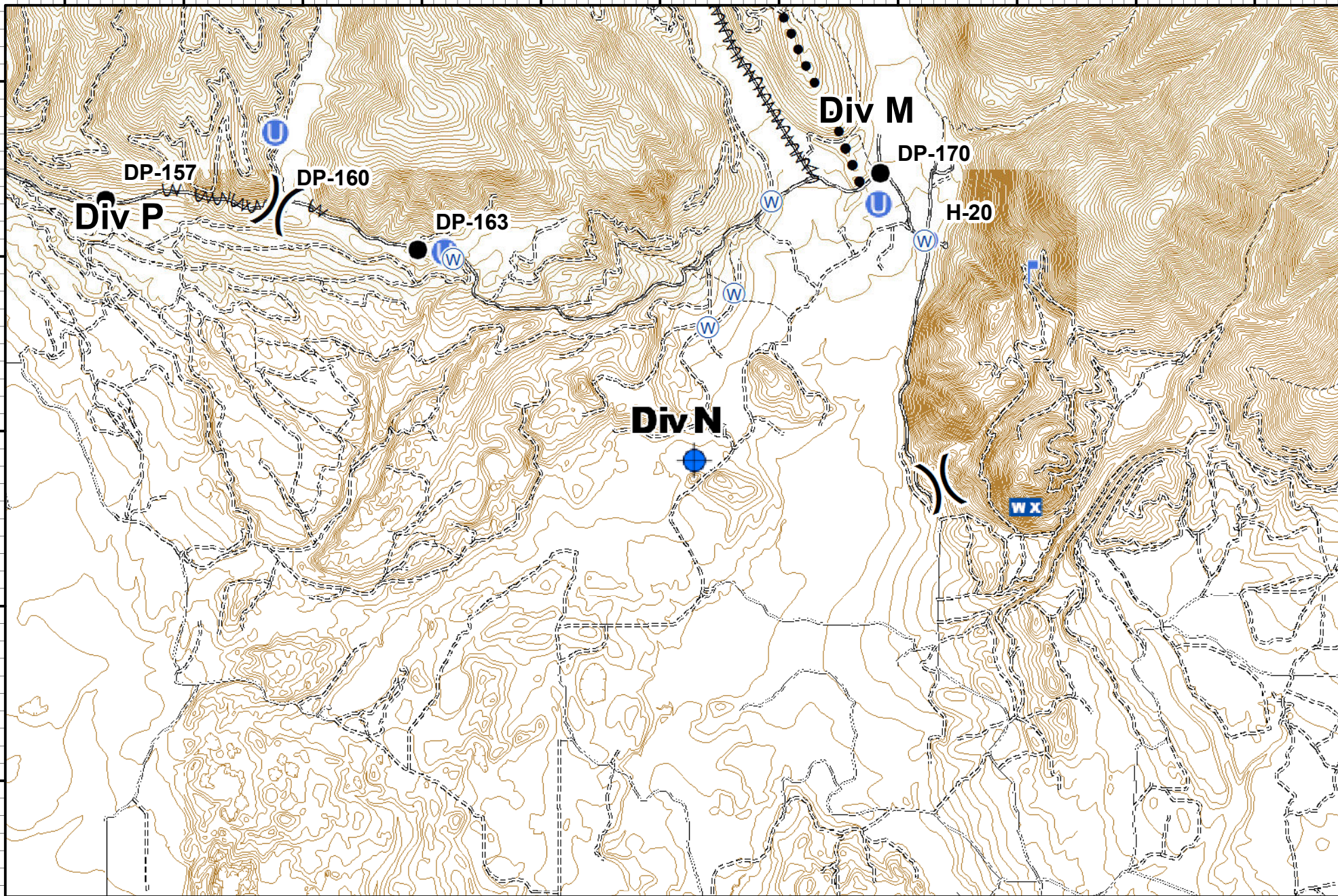
47°8'0"N

47°7'0"N

47°6'0"N

47°5'0"N

47°4'0"N



Incident Action Plan

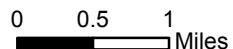
Rice Ridge Fire

MAP 10

MT-LNF-001464

09/03/2017

Approx Acres 40,164



	Dip Site		Helispot		Mobile Weather Unit		Fire Break Planned or Incomplete
	Drop Point		Lookout		Division Break		Planned Secondary Line
	Unimproved Landing Area		Water Source				