

Rice Ridge Fire

MT-LNF-001464

IAP Map, Night Shift

MAP1

9/5/2017



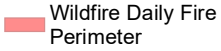
Branch Break



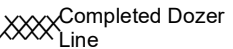
Dip Site



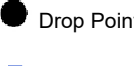
Water Source



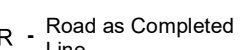
Wildfire Daily Fire Perimeter



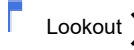
Completed Dozer Line



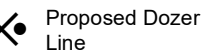
Drop Point



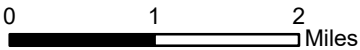
Road as Completed Line



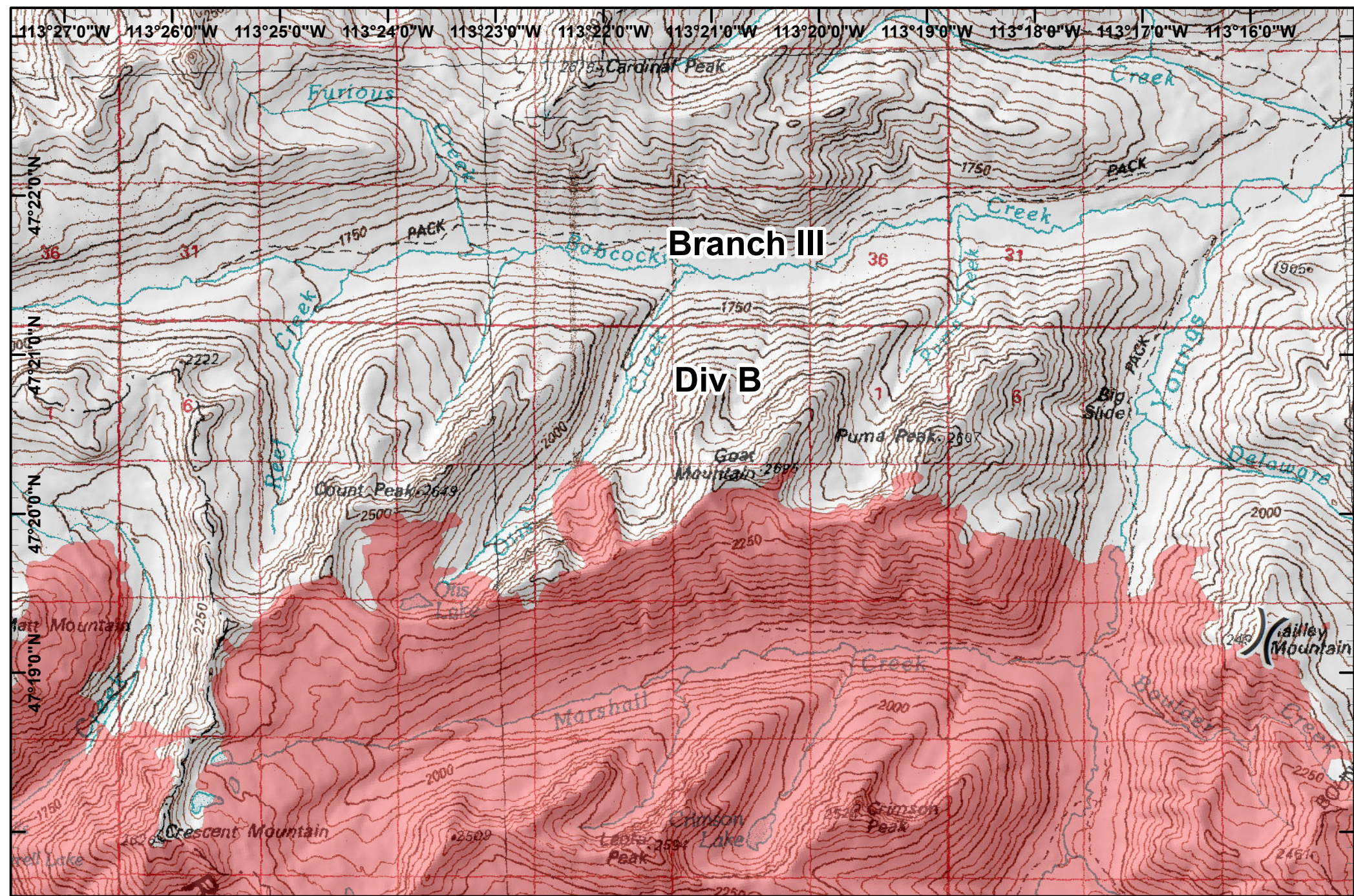
Lookout



Proposed Dozer Line



Greg Pouch's National Incident Management Team



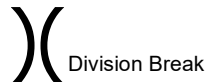
Rice Ridge Fire

MT-LNF-001464

I AP Map, Night Shift

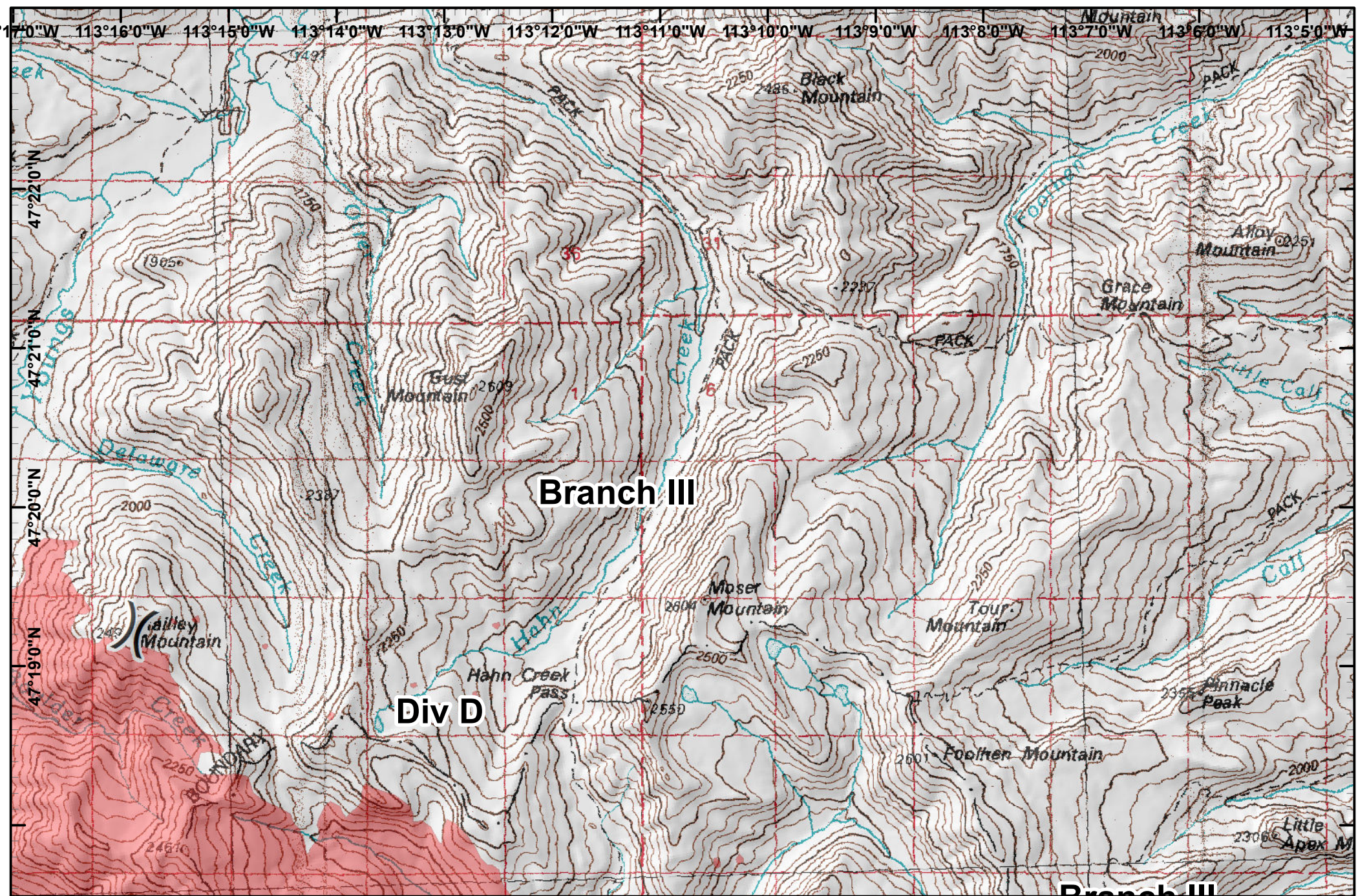
MAP2

9/5/2017



Wildfire Daily Fire Perimeter





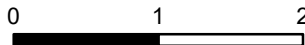
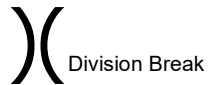
Rice Ridge Fire

MT-LNF-001464

IAP Map, Night Shift

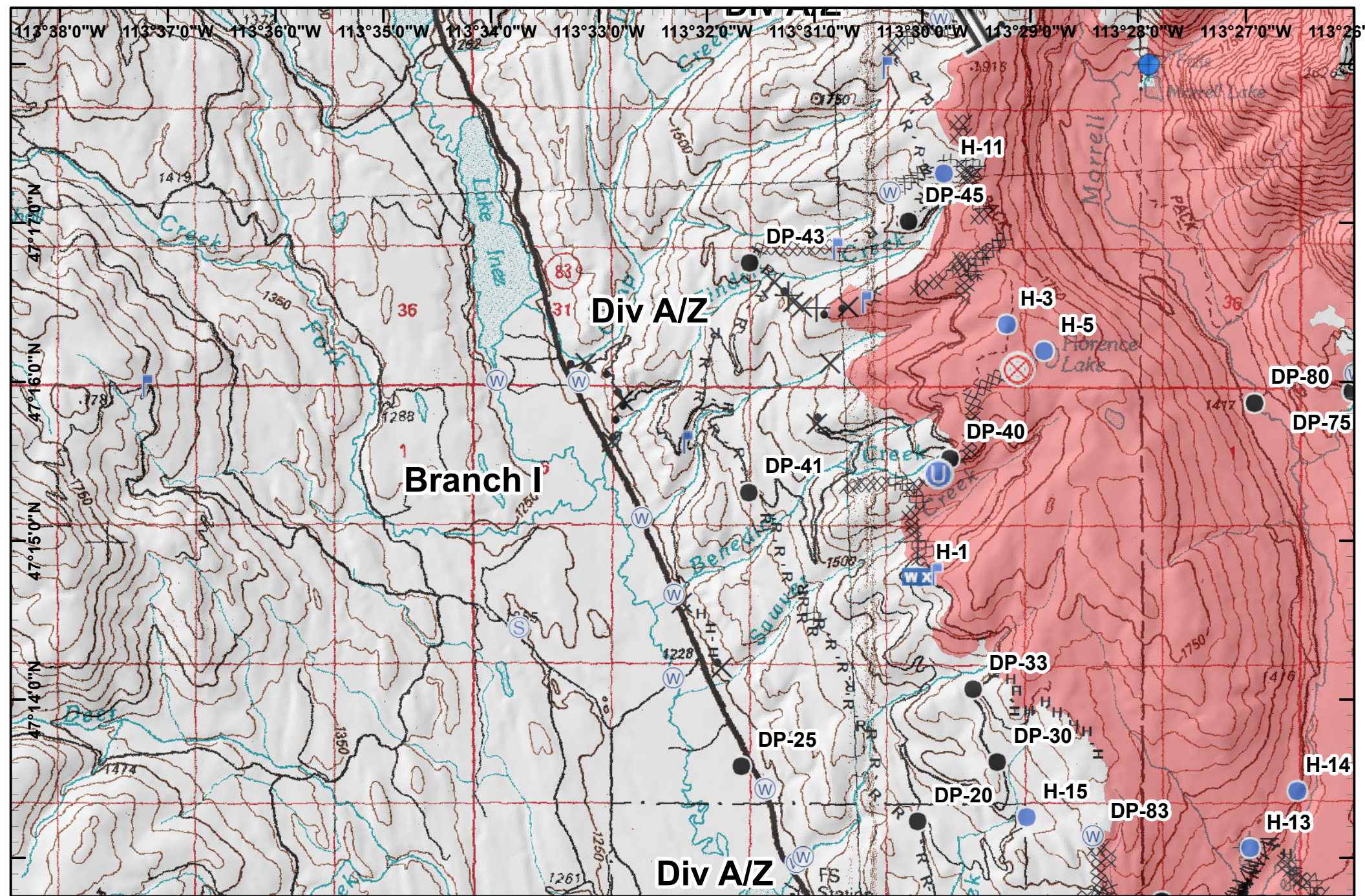
MAP3

9/5/2017



Wildfire Daily Fire Perimeter





Rice Ridge Fire

MT-LNF-001464

IAP Map, Night Shift

MAP4

9/5/2017



Branch Break



Dip Site



Fire Origin



Drop Point



Unimproved Landing Area



Helispot



Lookout



Staging Area



Water Source



Mobile Weather Unit



Completed Dozer Line



Completed Hand Line



R - Road as Completed Line



Line Break Completed



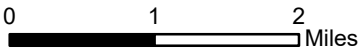
Proposed Dozer Line

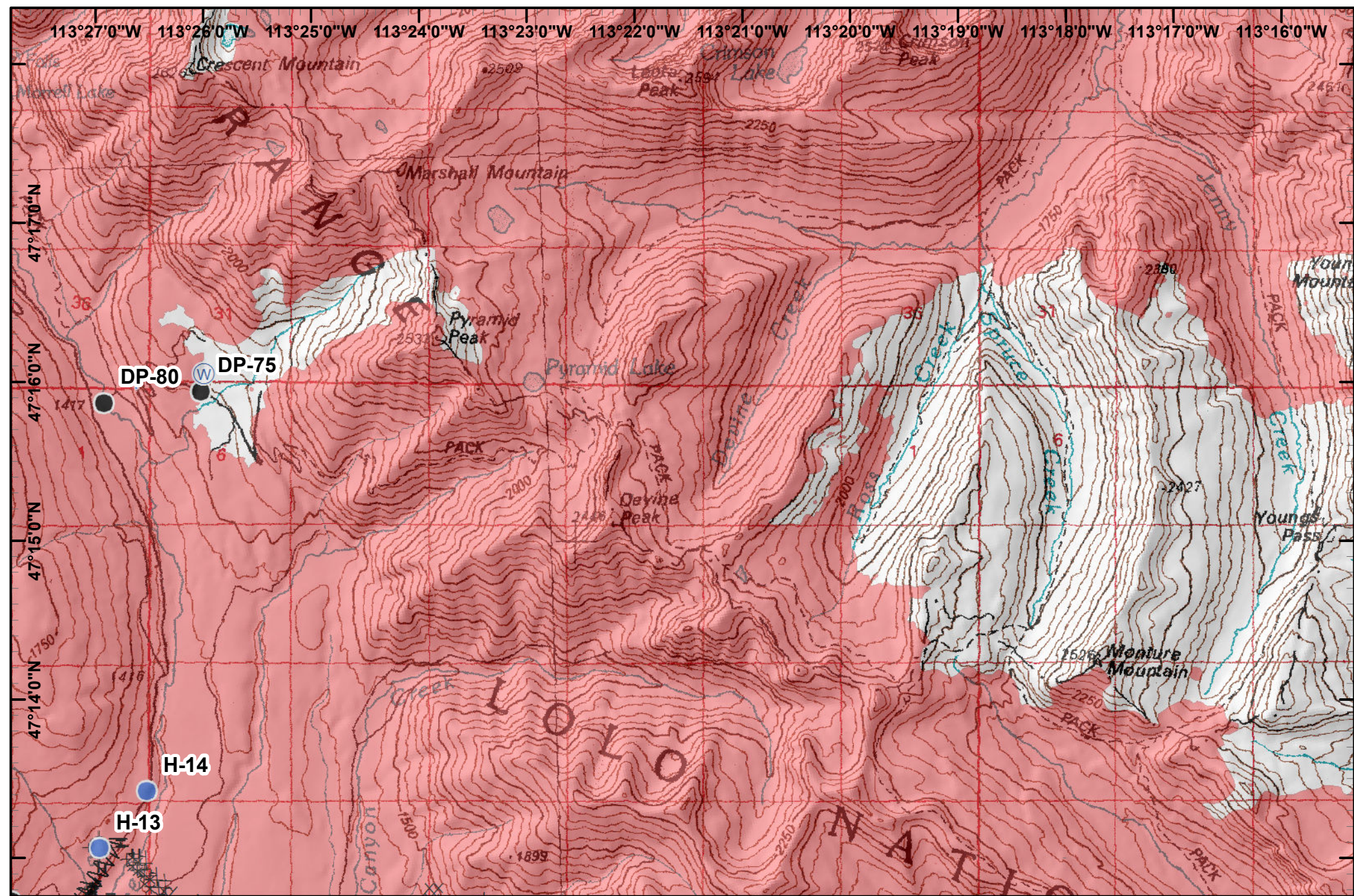


Fire Break Planned or Incomplete



Wildfire Daily Fire Perimeter

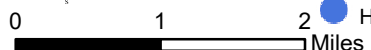


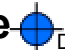










Rice Ridge Fire

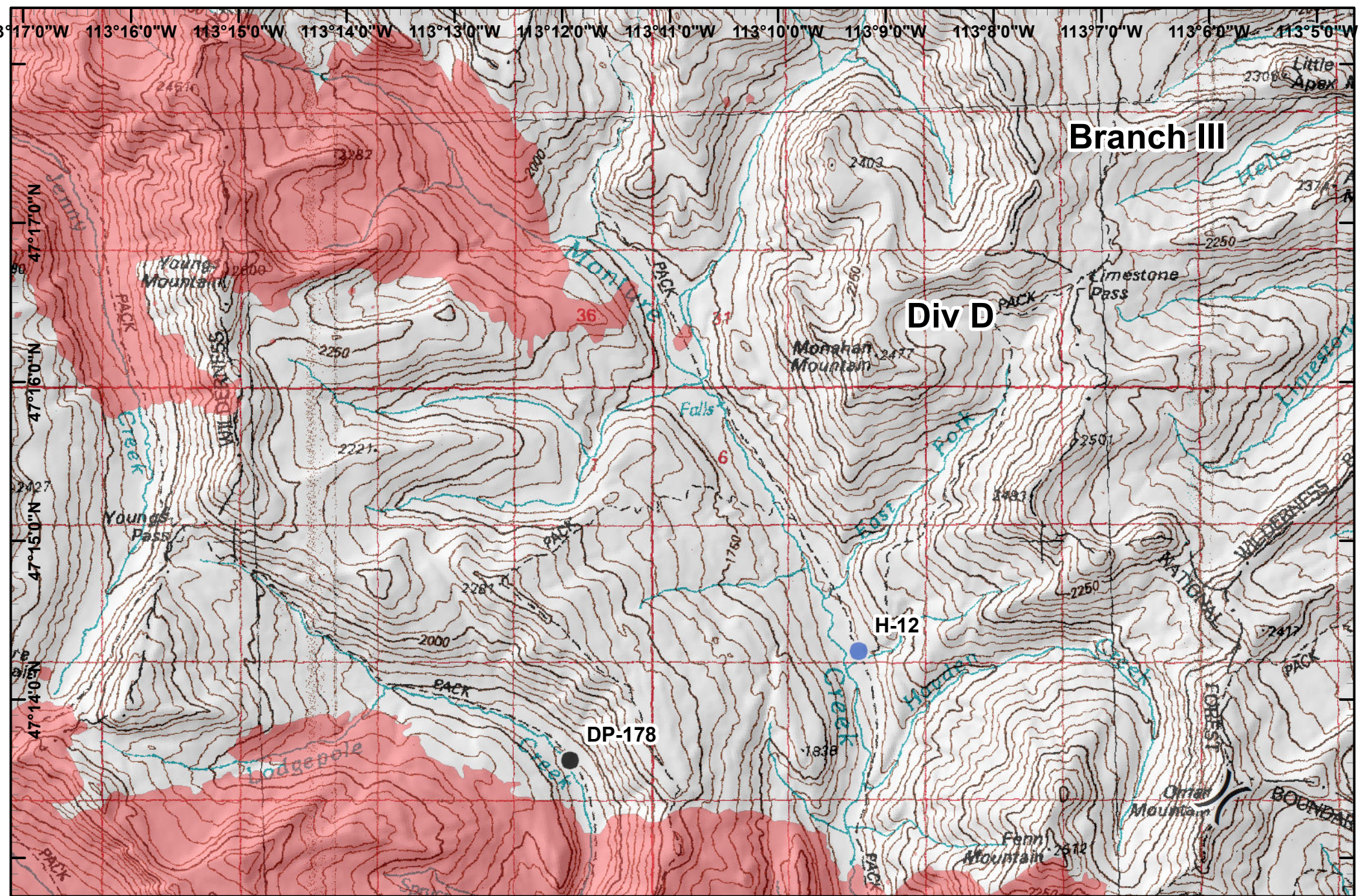
MT-LNF-001464

IAP Map, Night Shift
MAP5
9/5/2017



-  Dip Site
-  Drop Point
-  Water Source
-  Helispot
-  Lookout
-  Completed Dozer Line
-  Completed Hand Line
-  Line Break Completed
-  Wildfire Daily Fire Perimeter





Rice Ridge Fire

MT-LNF-001464

IAP Map, Night Shift

MAP6

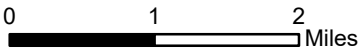
9/5/2017

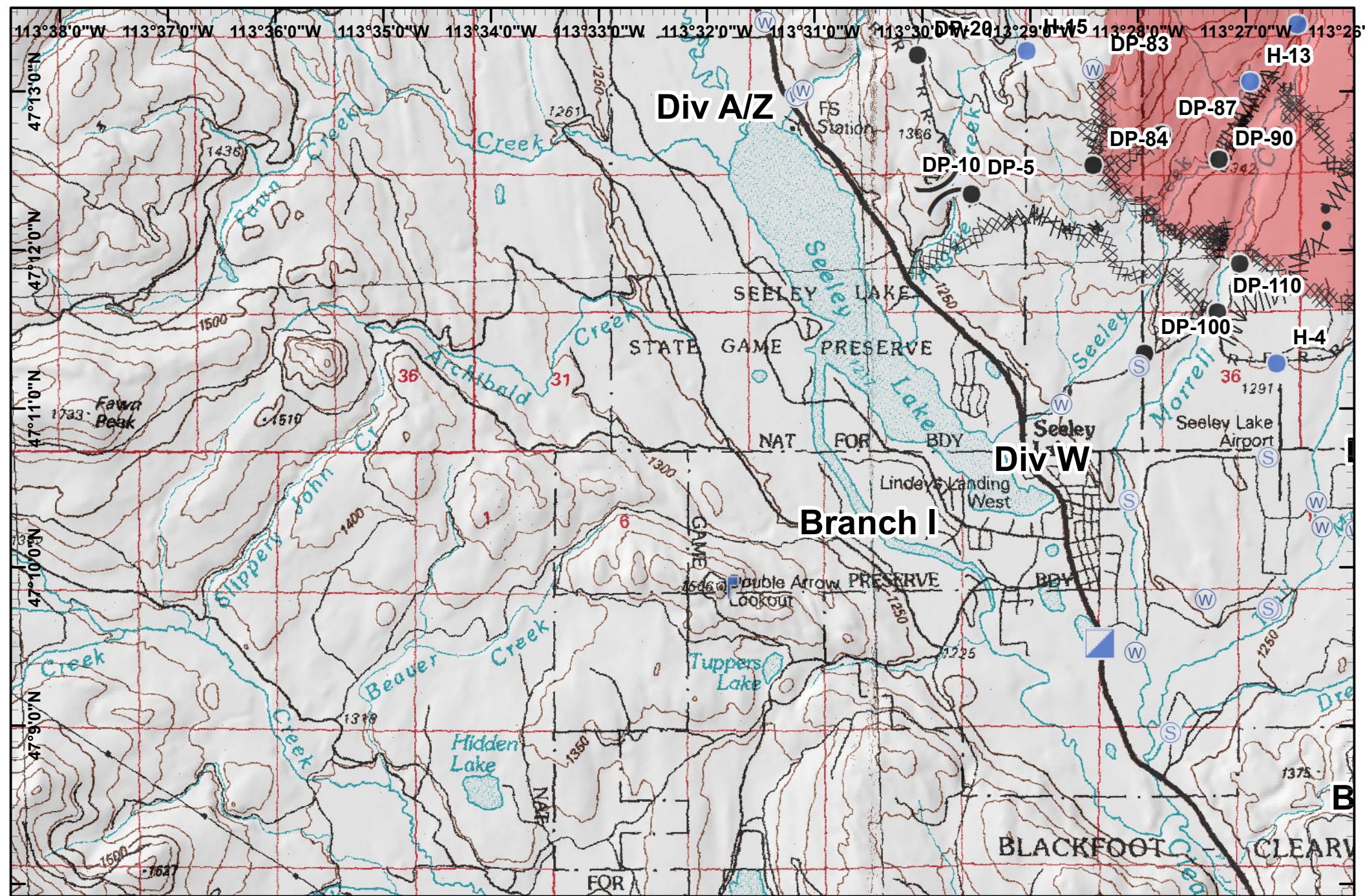
● Drop Point

● Helispot

⎓ Division Break

Wildfire Daily Fire Perimeter





Rice Ridge Fire

MT-LNF-001464

IAP Map, Night Shift

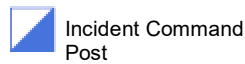
MAP7

9/5/2017

0 1 2 Miles



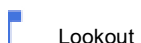
Dip Site



Incident Command Post



Drop Point



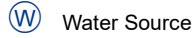
Lookout



Helispot



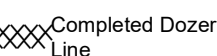
Staging Area



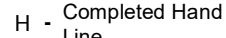
Water Source



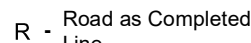
Division Break



Completed Dozer Line



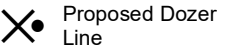
Completed Hand Line



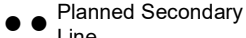
Road as Completed Line



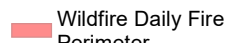
Line Break Completed



Proposed Dozer Line



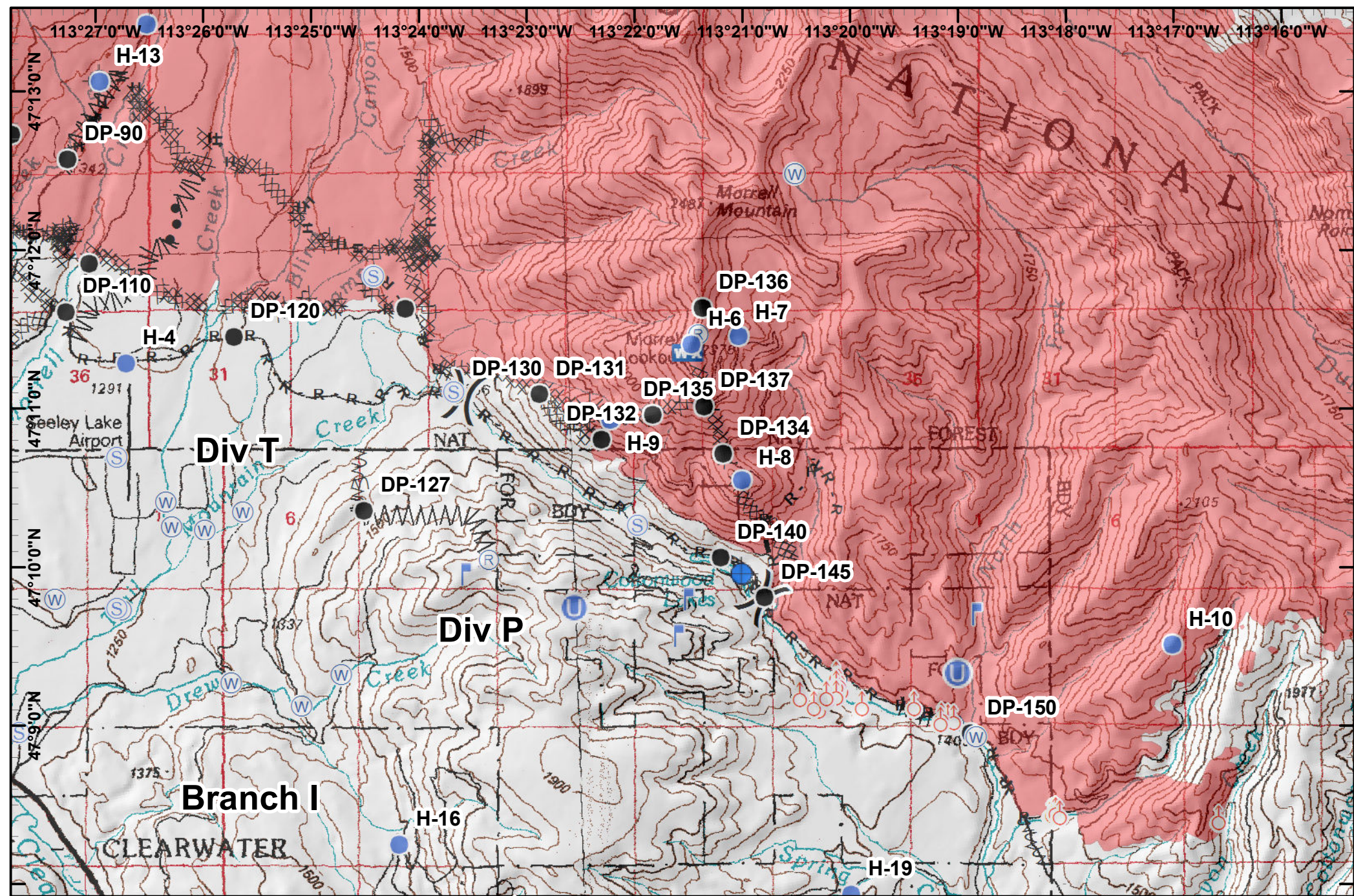
Planned Secondary Line



Wildfire Daily Fire Perimeter



Greg Pouch's National Incident Management Team



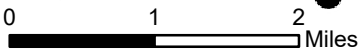
Rice Ridge Fire

MT-LNF-001464

IAP Map, Night Shift

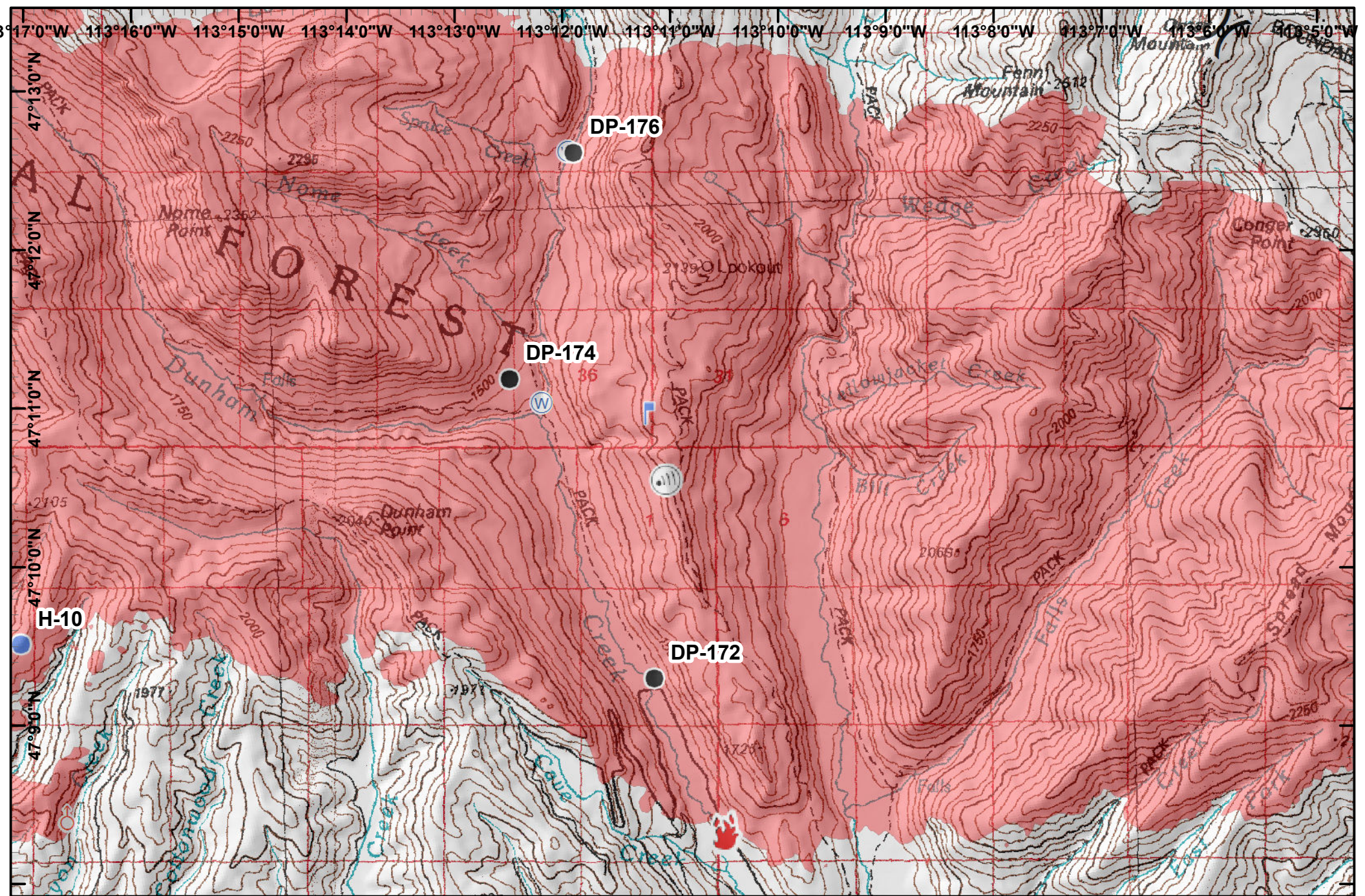
MAP8

9/5/2017



- | | | | | | | |
|---------------------|-------------------------|--------------|----------------------|----------------------------|----------------------------------|-------------------------------|
| Repeater | Unimproved Landing Area | Spot Fire | Division Break | R - Road as Completed Line | Fire Break Planned or Incomplete | Wildfire Daily Fire Perimeter |
| Dip Site | Helispot | Staging Area | Completed Dozer Line | Line Break Completed | Planned Fire Line | Planned Secondary Line |
| Drop Point | Lookout | Water Source | Completed Hand Line | Explosive Line | Highlighted Manmade Feature | |
| Mobile Weather Unit | | | | | | |





Rice Ridge Fire

MT-LNF-001464

IAP Map, Night Shift

MAP9

9/5/2017

● Drop Point

Ⓜ Internet Access

Ⓜ Water Source

🔥 Fire Location

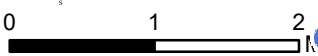
⎓ Division Break

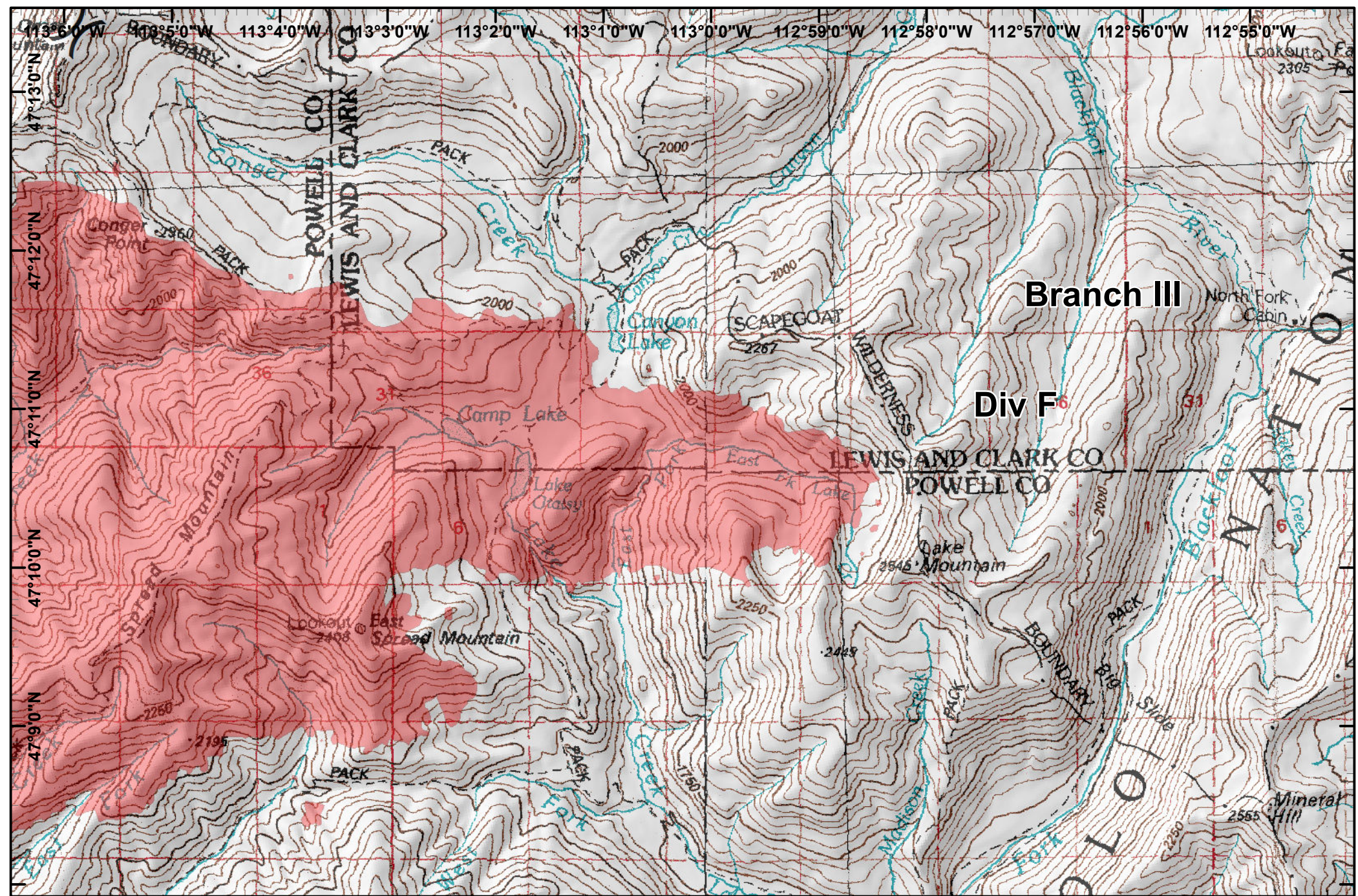
🚩 Lookout

📍 Spot Fire

🔴 Wildfire Daily Fire Perimeter

🔵 Helispot





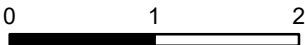
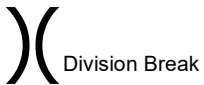
Rice Ridge Fire

MT-LNF-001464

IAP Map, Night Shift

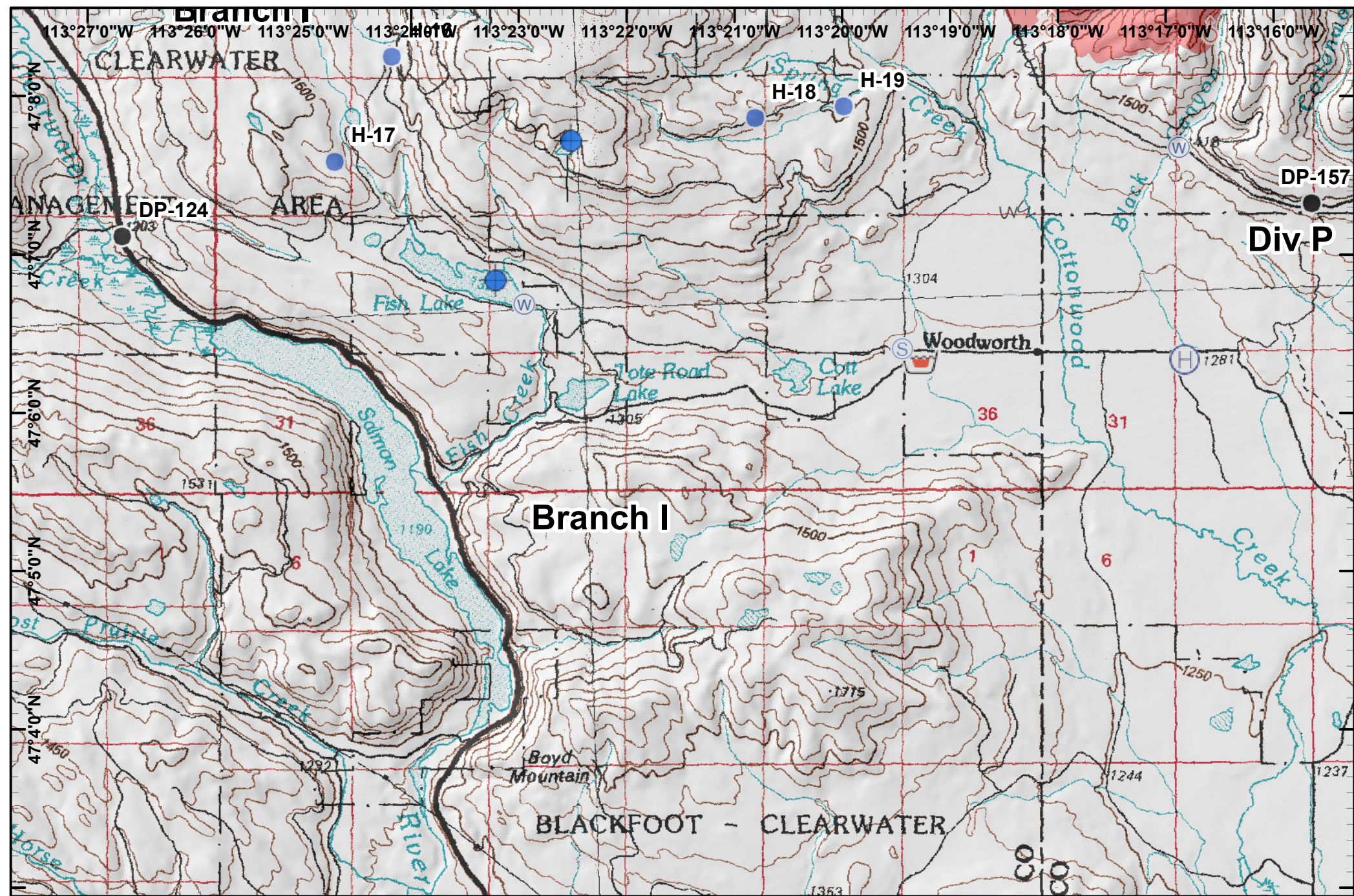
MAP10

9/5/2017



Wildfire Daily Fire Perimeter





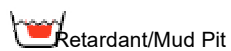
Rice Ridge Fire

MT-LNF-001464

IAP Map, Night Shift

MAP11

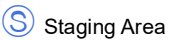
9/5/2017



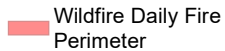
Retardant/Mud Pit



Helibase



Staging Area



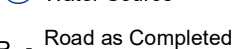
Wildfire Daily Fire Perimeter



Dip Site



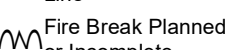
Helispot



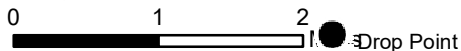
R - Road as Completed Line



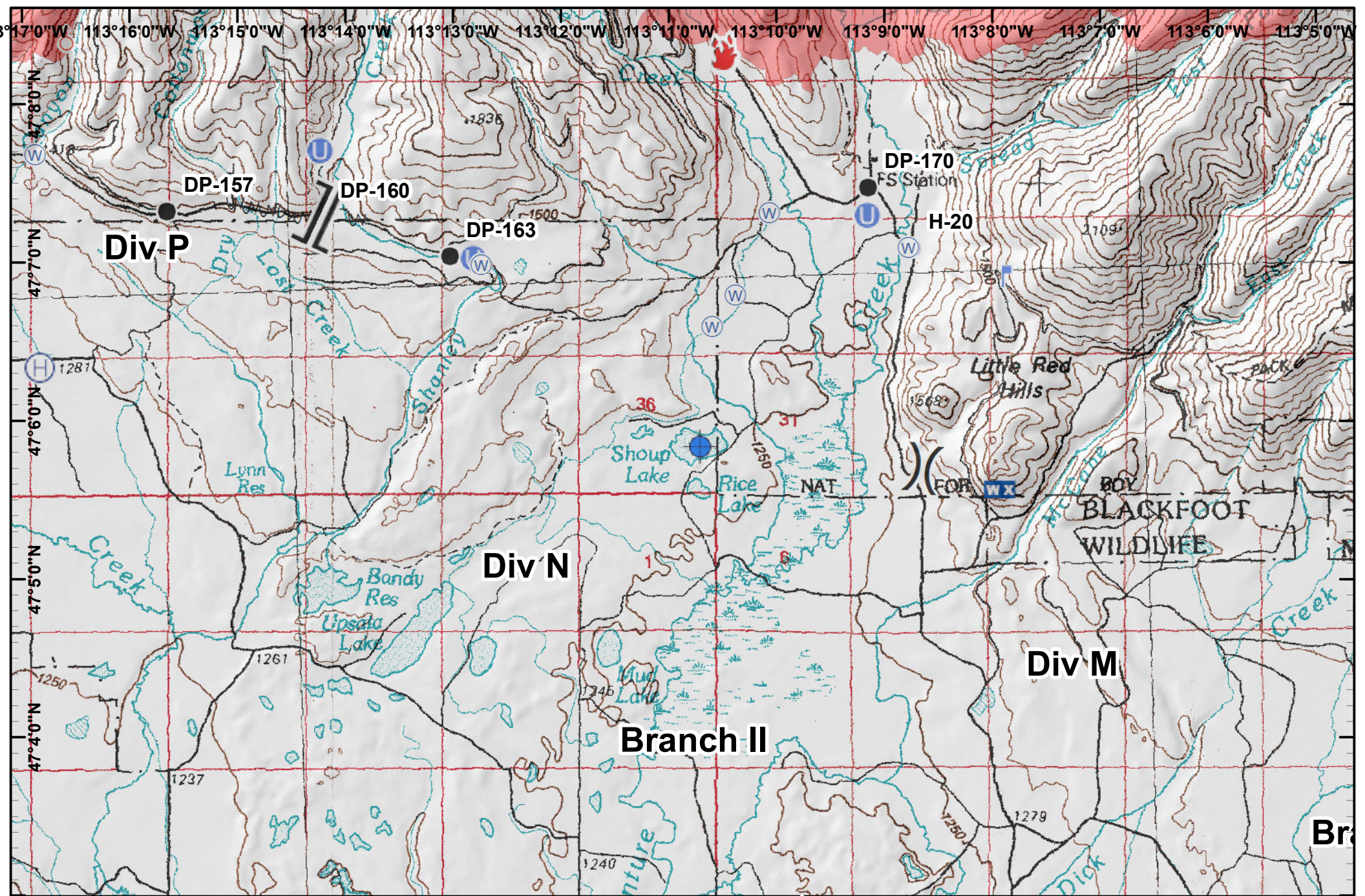
Spot Fire



Fire Break Planned or Incomplete



Greg Pouch's National Incident Management Team



Rice Ridge Fire

MT-LNF-001464

IAP Map, Night Shift

MAP12

9/5/2017



Branch Break



Dip Site



Fire Location



Unimproved Landing Area



Spot Fire



Water Source



Mobile Weather Unit



Division Break



Fire Break Planned or Incomplete

Wildfire Daily Fire Perimeter



Drop Point



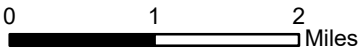
Helibase

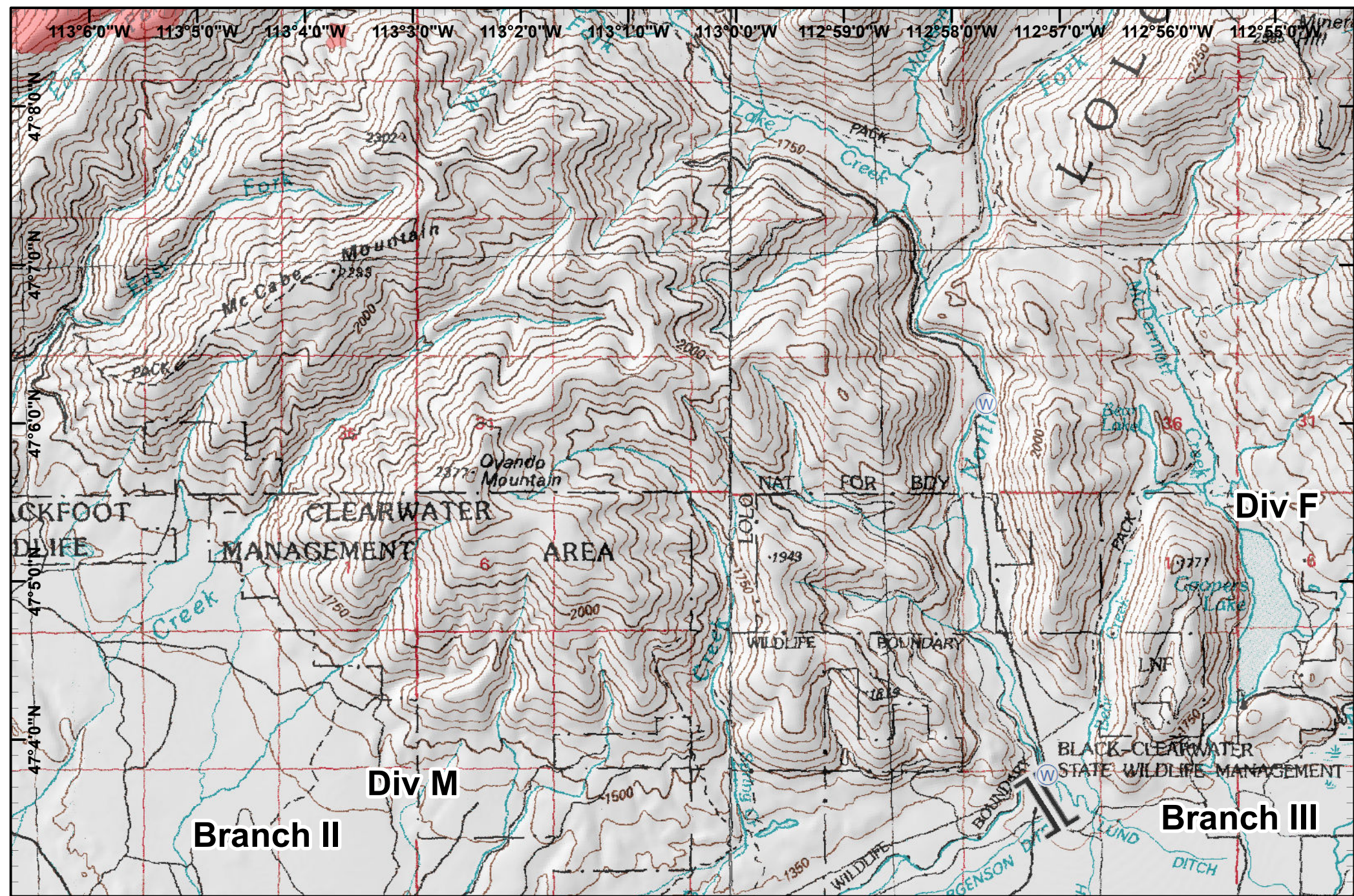


Helispot



Lookout





Rice Ridge Fire

MT-LNF-001464

IAP Map, Night Shift

MAP13

9/5/2017



Branch Break



Water Source

Wildfire Daily Fire Perimeter

