

Rice Ridge Fire

MT-LNF-001464

Pilot Map

September 7, 2017

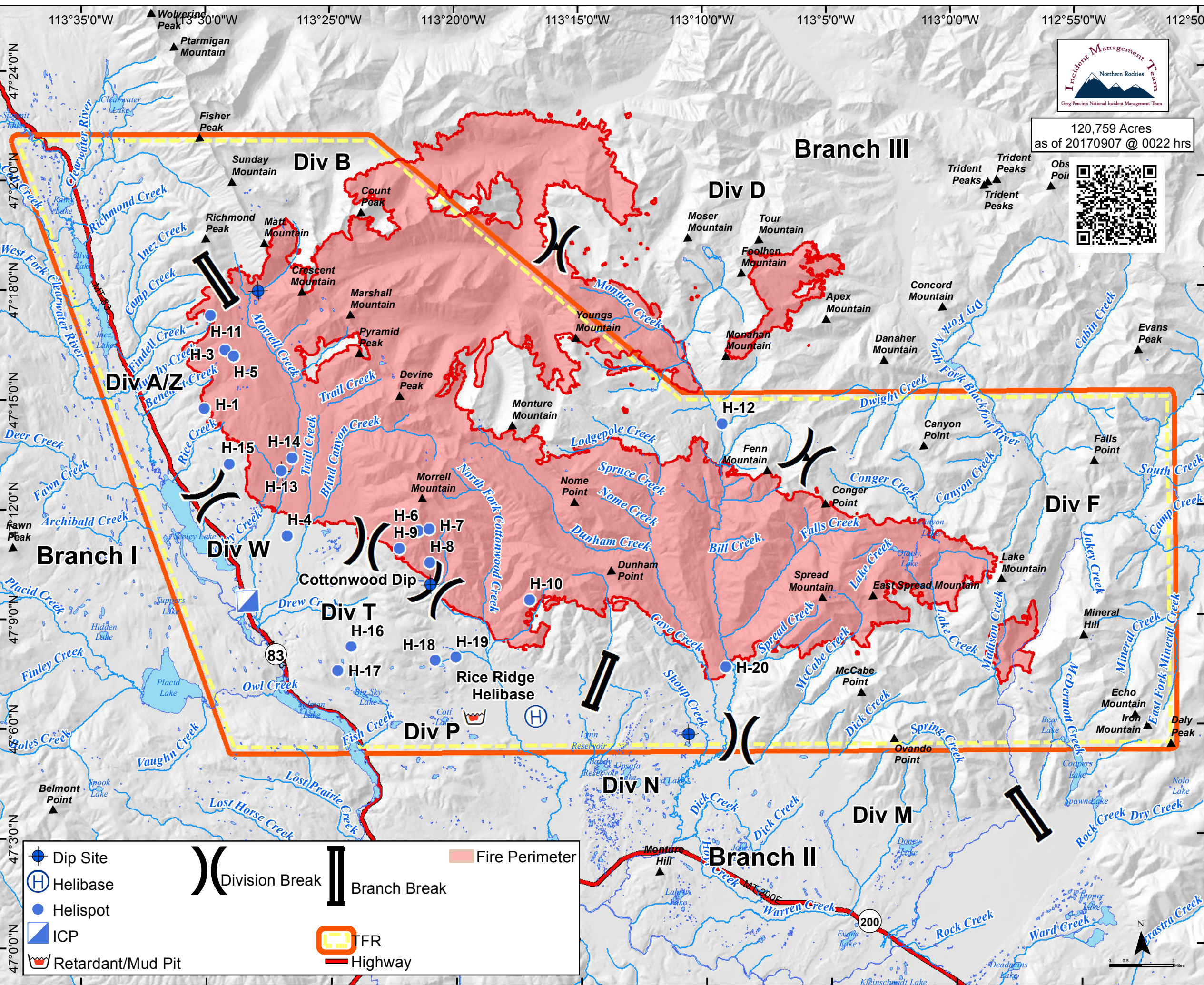


120,759 Acres
as of 20170907 @ 0022 hrs



Frequencies	Type	Freq.
TFR/FW Rice Ridge	AM	119.050
Rotorwing	AM	125.025
A/G 1 Recon/Rice	FM TX/RX	169.825
A/G 2 Buckets/Rice	FM TX/RX	169.450
Deck/TOLC/Rice Ridge	FM RX/TX	167.950
A/G 1 Recon/Liberty	FM TX/RX	168.500
A/G 2 Buckets/Liberty	FM TX/RX	172.4375
Fixedwing/Liberty	AM	132.225
Rotorwing/Liberty	AM	125.275
Tan A/G Life Flight White	FM RX/TX	155.340N
A/G Hospitals use when talking direct to Hospital		155.280N TT 156.7
Air Guard	FM RX/TX	168.625 110.9 TT/RT

Label	Latitude	Longitude
Dip Site	47° 13.067'	-113° 26.967'
Dip Site	47° 17.999'	-113° 27.908'
Cottonwood Dip	47° 9.961'	-113° 21.011'
Dip Site	47° 5.840'	-113° 10.712'
Retardant/Mud Pit	47° 6.322'	-113° 19.283'
Rice Ridge Helibase	47° 6.340'	-113° 16.835'
H-1	47° 14.772'	-113° 30.034'
H-3	47° 16.365'	-113° 29.222'
H-4	47° 11.291'	-113° 26.722'
H-5	47° 16.199'	-113° 28.877'
H-6	47° 11.410'	-113° 21.475'
H-7	47° 11.462'	-113° 21.040'
H-8	47° 10.554'	-113° 21.010'
H-9	47° 10.939'	-113° 22.232'
H-10	47° 9.516'	-113° 17.021'
H-11	47° 17.318'	-113° 29.807'
H-12	47° 14.308'	-113° 9.260'
H-13	47° 13.067'	-113° 26.967'
H-14	47° 13.428'	-113° 26.530'
H-15	47° 13.264'	-113° 29.042'
H-16	47° 8.255'	-113° 24.187'
H-17	47° 7.592'	-113° 24.716'
H-18	47° 7.868'	-113° 20.814'
H-19	47° 7.941'	-113° 19.994'
H-20	47° 7.647'	-113° 9.182'
ICP	47° 9.524'	-113° 28.358'



● Dip Site
H Helibase
● Helispot
▣ ICP
👑 Retardant/Mud Pit
) Division Break
 Branch Break
 Fire Perimeter
TFR TFR
 Highway