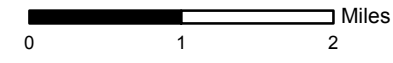
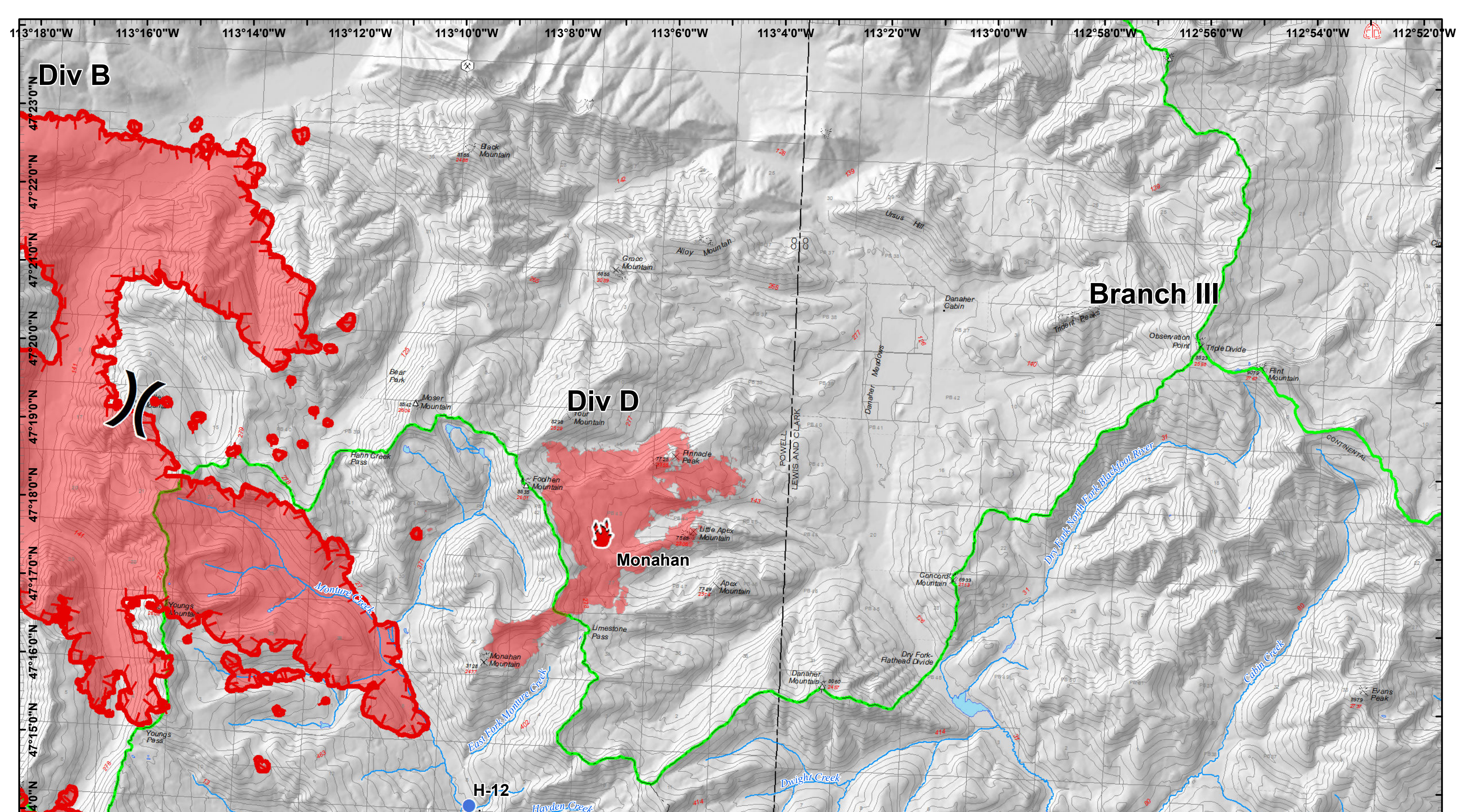


Rice Ridge Fire
 MT-LNF-001464
 IAP Map
 Page 1
 9/8/2017




- | | | | | | |
|---------------|-------------|---------------------|------------------------|----------------------------------|-------------------------------|
| Dip Site | Fire Origin | Mobile Weather Unit | Completed Dozer Line | Completed Plow Line | Uncontrolled Fire Edge |
| Drop Point | Helispot | Spot Fire | Completed Hand Line | Proposed Dozer Line | Structures |
| Fire Location | Lookout | Staging Area | Road as Completed Line | Fire Break Planned or Incomplete | Wildfire Daily Fire Perimeter |
| | | | Branch Break | | |
| | | | | Planned Fire Line | |
| | | | | Completed Line | |

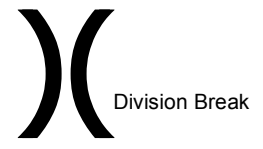





Rice Ridge Fire
 MT-LNF-001464
 IAP Map
 Page 2
 9/8/2017

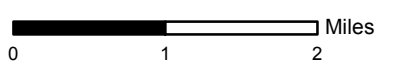


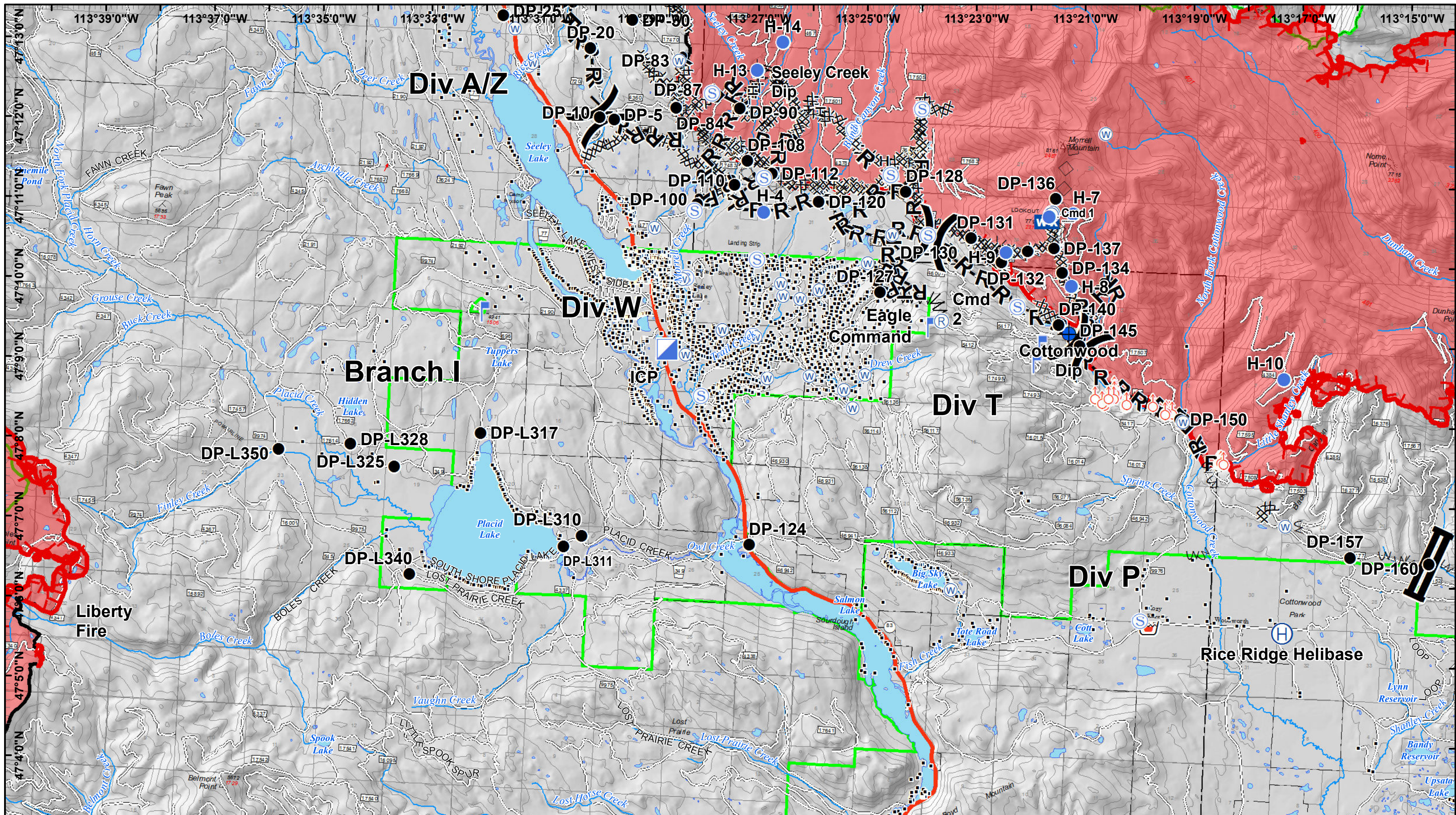
-  Fire Location
-  Helispot



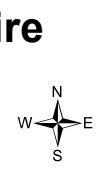
 Wildfire Daily Fire Perimeter

 Uncontrolled Fire Edge



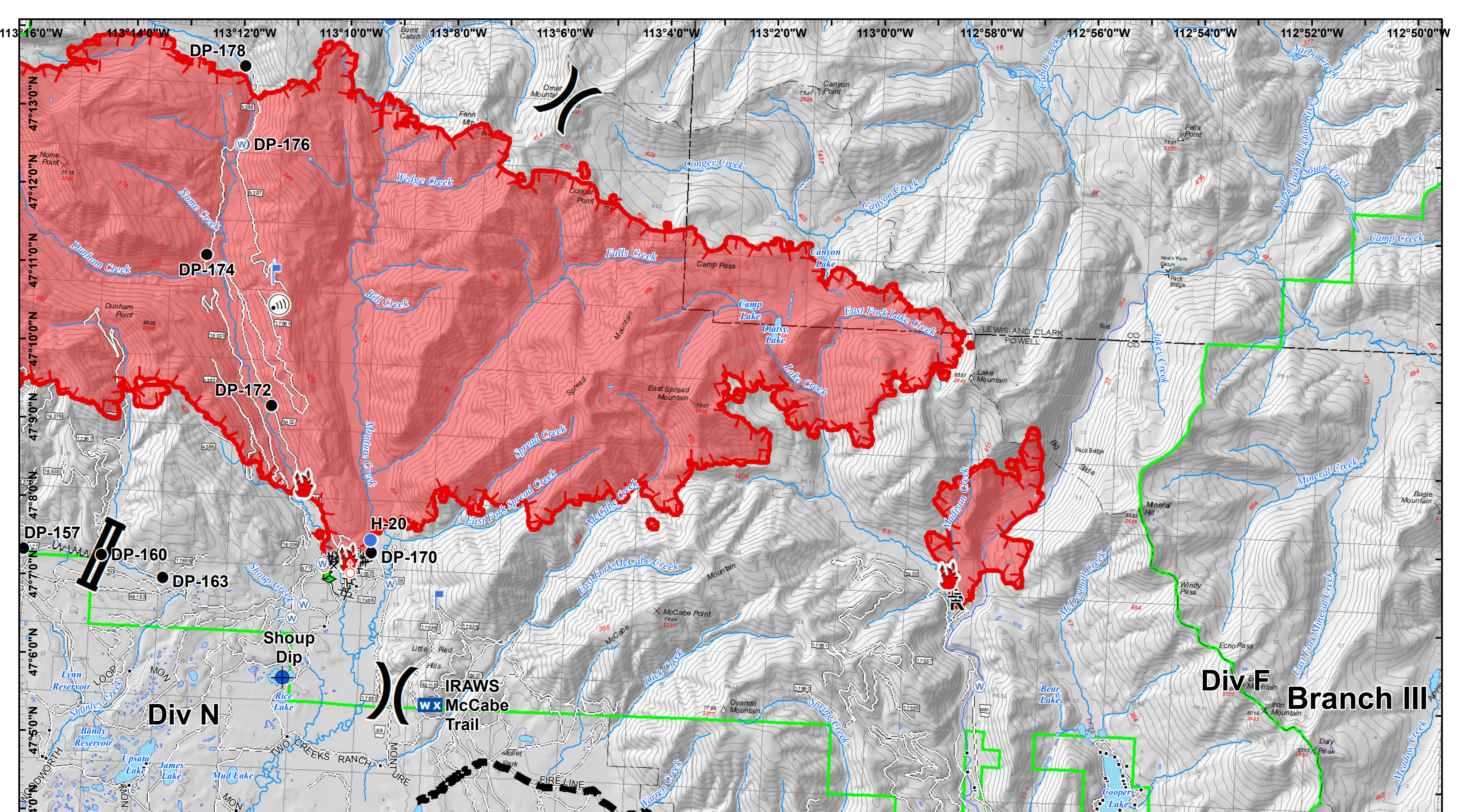


Rice Ridge Fire
 MT-LNF-001464
 IAP Map
 Page 3
 9/8/2017



- | | | | | | | | |
|------------|---------------------|-------------------|----------------|----------------------------------|----------------------|-----------------------------|-------------------------------|
| Dip Site | ICP | Retardant/Mud Pit | Division Break | Completed Dozer Line | Line Break Completed | Planned Fire Line | Uncontrolled Fire Edge |
| Drop Point | Lookout | Spot Fire | Branch Break | Completed Hand Line | Explosive Line | Planned Secondary Line | Structures |
| Helibase | Mobile Weather Unit | Staging Area | | Road as Completed Line | Proposed Dozer Line | Aerial Retardant Drop | Wildfire Daily Fire Perimeter |
| Helispot | Repeater | Water Source | | Fire Break Planned or Incomplete | | Air Tanker Retardant | |
| | | | | | | Highlighted Manmade Feature | |
| | | | | | | Completed Line | |



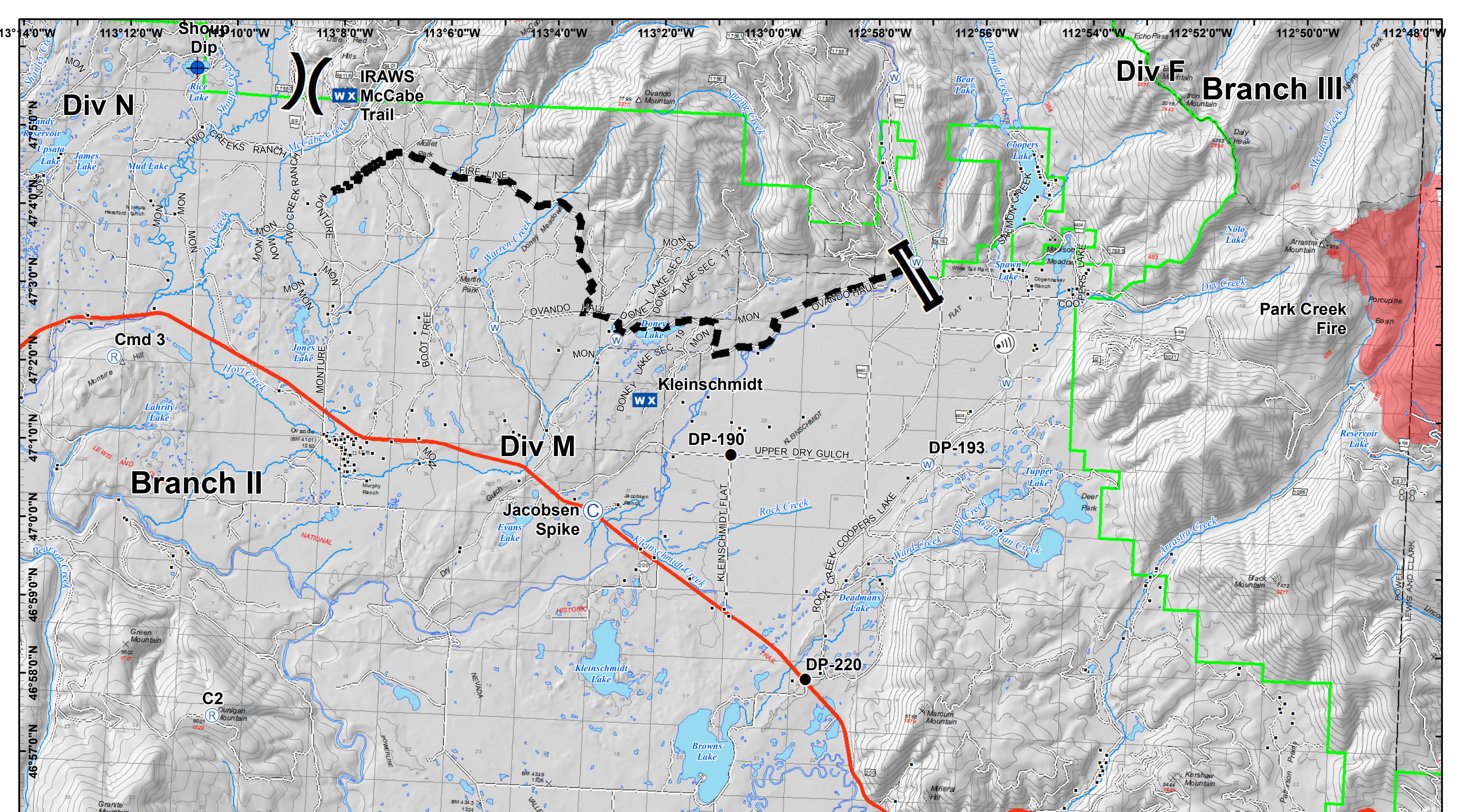


Rice Ridge Fire
 MT-LNF-001464
 IAP Map
 Page 4
 9/8/2017

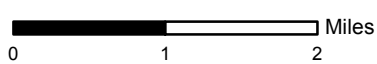


- | | | | | | | |
|---------------|-----------------|------------------------|----------------|---------------------------|----------------------------------|-------------------------------|
| Dip Site | Helispot | Spot Fire | Division Break | Completed Dozer Line | Completed Plow Line | Wildfire Daily Fire Perimeter |
| Drop Point | Internet Access | Water Source | Branch Break | Completed Hand Line | Fire Break Planned or Incomplete | Planned Fire Line |
| Fire Location | Lookout | WX Mobile Weather Unit | | Road as Completed Line | Highlighted Manmade Feature | Uncontrolled Fire Edge |
| | | | | R- Road as Completed Line | Structures | |





Rice Ridge Fire
 MT-LNF-001464
 IAP Map
 Page 5
 9/8/2017



- C Camp
- WX Mobile Weather Unit
- R Repeater
- W Water Source
- Dip Site
- Drop Point
- Division Break
- Branch Break
- Planned Fire Line
- Structures
- Wildfire Daily Fire Perimeter
- R- Road as Completed Line
- Ⓜ Internet Access

