

Rice Ridge Fire

MT-LNF-001464

Pilot Map

September 8, 2017

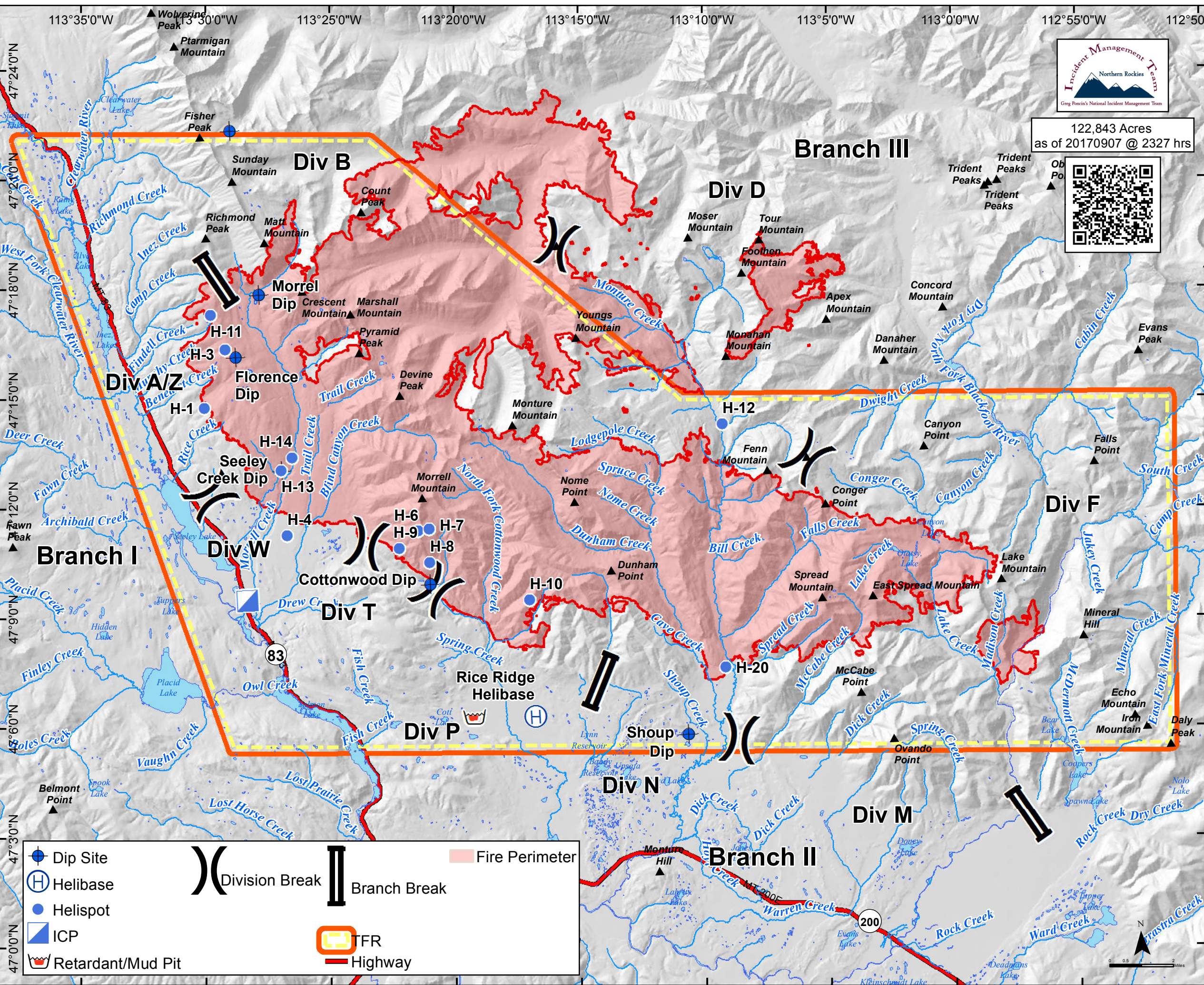


122,843 Acres
as of 20170907 @ 2327 hrs



Frequencies	Type	Freq.
TFR/FW Rice Ridge	AM	119.050
Rotorwing	AM	125.025
A/G 1 Recon/Rice	FM TX/RX	169.825
A/G 2 Buckets/Rice	FM TX/RX	169.450
Deck/TOLC/Rice Ridge	FM RX/TX	167.950
A/G 1 Recon/Liberty	FM TX/RX	168.500
A/G 2 Buckets/Liberty	FM TX/RX	172.4375
Fixedwing/Liberty	AM	132.225
Rotorwing Liberty	AM	125.275
Tan A/G Life Flight White	FM RX/TX	155.340N
A/G Hospitals use when talking direct to Hospital		155.280N
Air Guard	FM RX/TX	TT 156.7
		168.625
		110.9 TT/RT

Label	Latitude	Longitude
Rice Ridge Helibase	47° 6.340'	-113° 16.835'
MRB/GEL Site	47° 6.322'	-113° 19.283'
Seeley Creek Dip	47° 13.067'	-113° 26.967'
Morrel Dip	47° 17.999'	-113° 27.908'
Cottonwood Dip	47° 9.961'	-113° 21.011'
Shoup Dip	47° 5.840'	-113° 10.712'
Florence Dip	47° 16.173'	-113° 28.817'
Dip Site	47° 22.371'	-113° 29.051'
H-1	47° 14.772'	-113° 30.034'
H-3	47° 16.365'	-113° 29.222'
H-4	47° 11.291'	-113° 26.722'
H-6	47° 11.410'	-113° 21.475'
H-7	47° 11.462'	-113° 21.040'
H-8	47° 10.554'	-113° 21.010'
H-9	47° 10.939'	-113° 22.232'
H-10	47° 9.516'	-113° 17.021'
H-11	47° 17.318'	-113° 29.807'
H-12	47° 14.308'	-113° 9.260'
H-13	47° 13.067'	-113° 26.967'
H-14	47° 13.428'	-113° 26.530'
H-20	47° 7.647'	-113° 9.182'
H-21	47° 15.563'	-112° 49.120'
Rice Ridge ICP	47° 9.524'	-113° 28.358'



Dip Site
 Helibase
 Helispot
 ICP
 Retardant/Mud Pit
 Division Break
 Branch Break
 Fire Perimeter
 TFR
 Highway