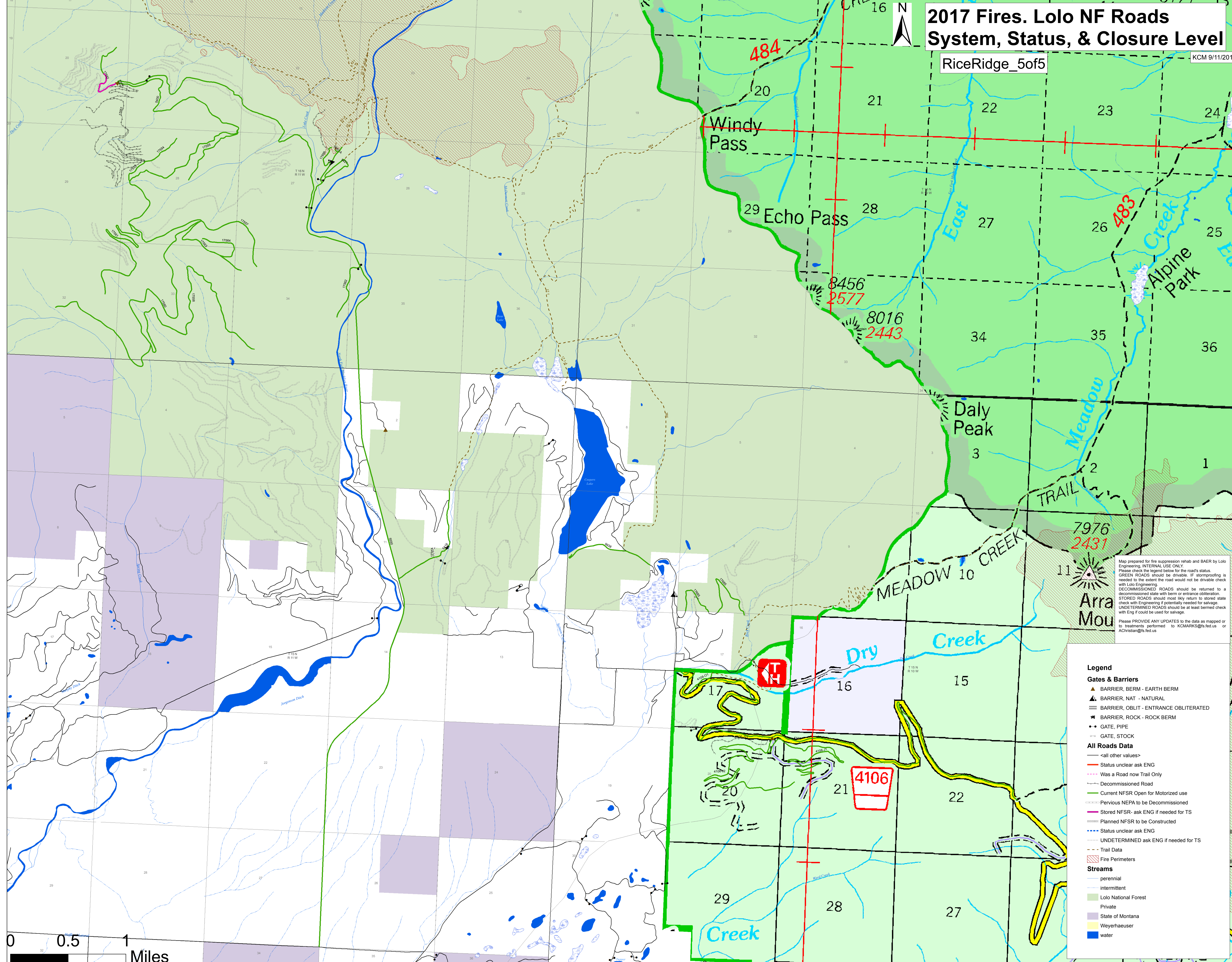
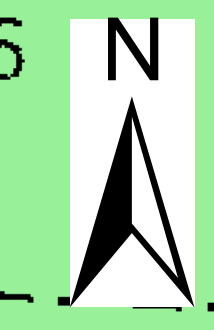


2017 Fires. Lolo NF Roads System, Status, & Closure Level

RiceRidge_5of5

KCM 9/11/2017



Map prepared for fire suppression rehab and BAER by Lolo Engineering, INTERNAL USE ONLY.
 Please check the legend below for the road's status.
 GREEN ROADS should be drivable. IF stamping is needed to the extent the road would not be drivable check with Lolo Engineering.
 DECOMMISSIONED ROADS should be returned to a decommissioned state with berm or entrance obliteration.
 STORED ROADS should most likely return to stored state check with Engineering if potentially needed for salvage.
 UNDETERMINED ROADS should be at least bermed check with Eng if could be used for salvage.
 Please PROVIDE ANY UPDATES to the data as mapped or to treatments performed to KCMARKS@fs.fed.us or AChrisian@fs.fed.us

Legend

Gates & Barriers

- ▲ BARRIER, BERM - EARTH BERM
- ▲ BARRIER, NAT - NATURAL
- ▲ BARRIER, OBLIT - ENTRANCE OBLITERATED
- ▲ BARRIER, ROCK - ROCK BERM
- GATE, PIPE
- GATE, STOCK

All Roads Data

- <all other values>
- Status unclear ask ENG
- Was a Road now Trail Only
- Decommissioned Road
- Current NFSR Open for Motorized use
- Previous NEPA to be Decommissioned
- Stored NFSR- ask ENG if needed for TS
- Planned NFSR to be Constructed
- Status unclear ask ENG
- UNDETERMINED ask ENG if needed for TS
- Trail Data
- Fire Perimeters

Streams

- perennial
- intermittent
- Lolo National Forest
- Private
- State of Montana
- Weyerhaeuser
- water