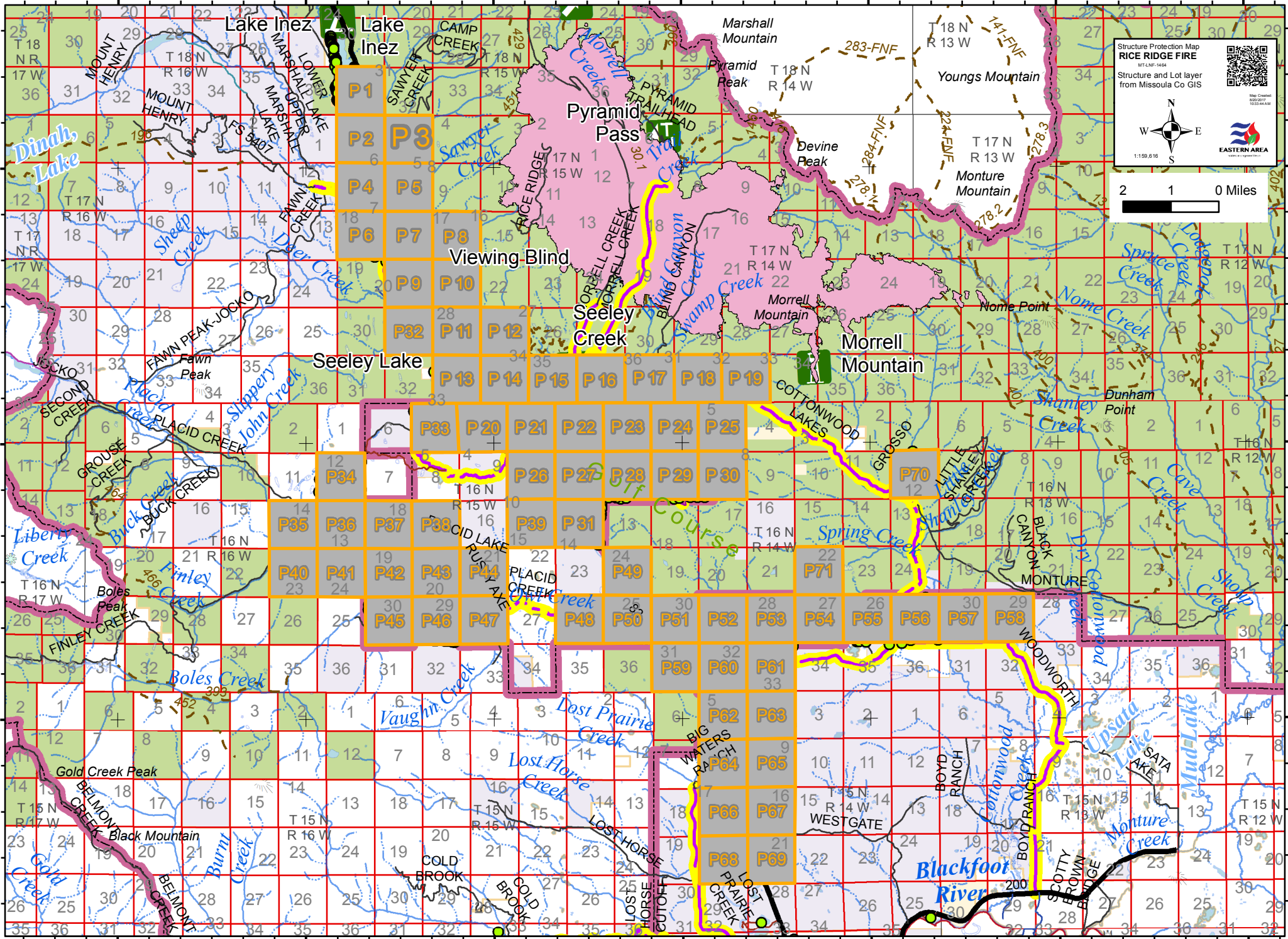



Structure Protection Mapbook Index


113°40'0"W 113°35'0"W 113°30'0"W 113°25'0"W 113°20'0"W 113°15'0"W 113°10'0"W



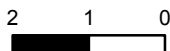
Structure Protection Map
RICE RIDGE FIRE
MT.FNF-1464
Structure and Lot layer
from Missoula Co GIS



Map Created:
08/27/2024
10:24:41



2 1 0 Miles



EASTERN AREA
Map of Montana