

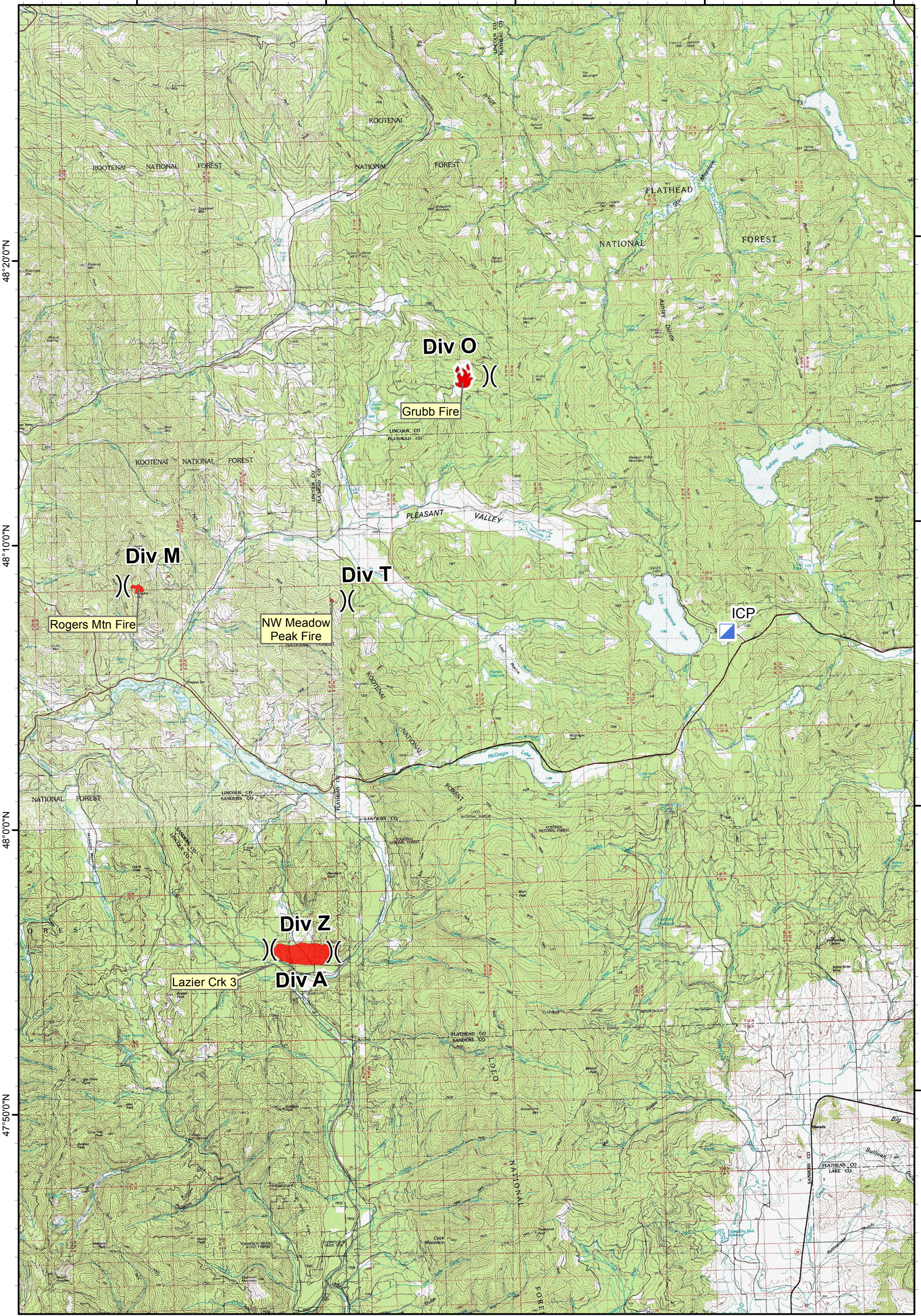
115°10'0"W

115°0'0"W

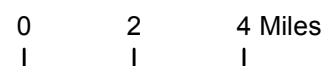
114°50'0"W

114°40'0"W




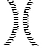
114°30'0"W



Rogers Mountain Fire - Air Operations Map



MT DNRC
7/11/2017
Approx. Acres
Lazier 1,150, Rogers Mtn 69, NW Meadow Pk 12

-  Incident Command Post
-  Fire Location
-  Fire Perimeter
-  Division Break

