

115°10'0"W

115°0'0"W

114°50'0"W

114°40'0"W

114°30'0"W

48°20'0"N

48°20'0"N

48°10'0"N

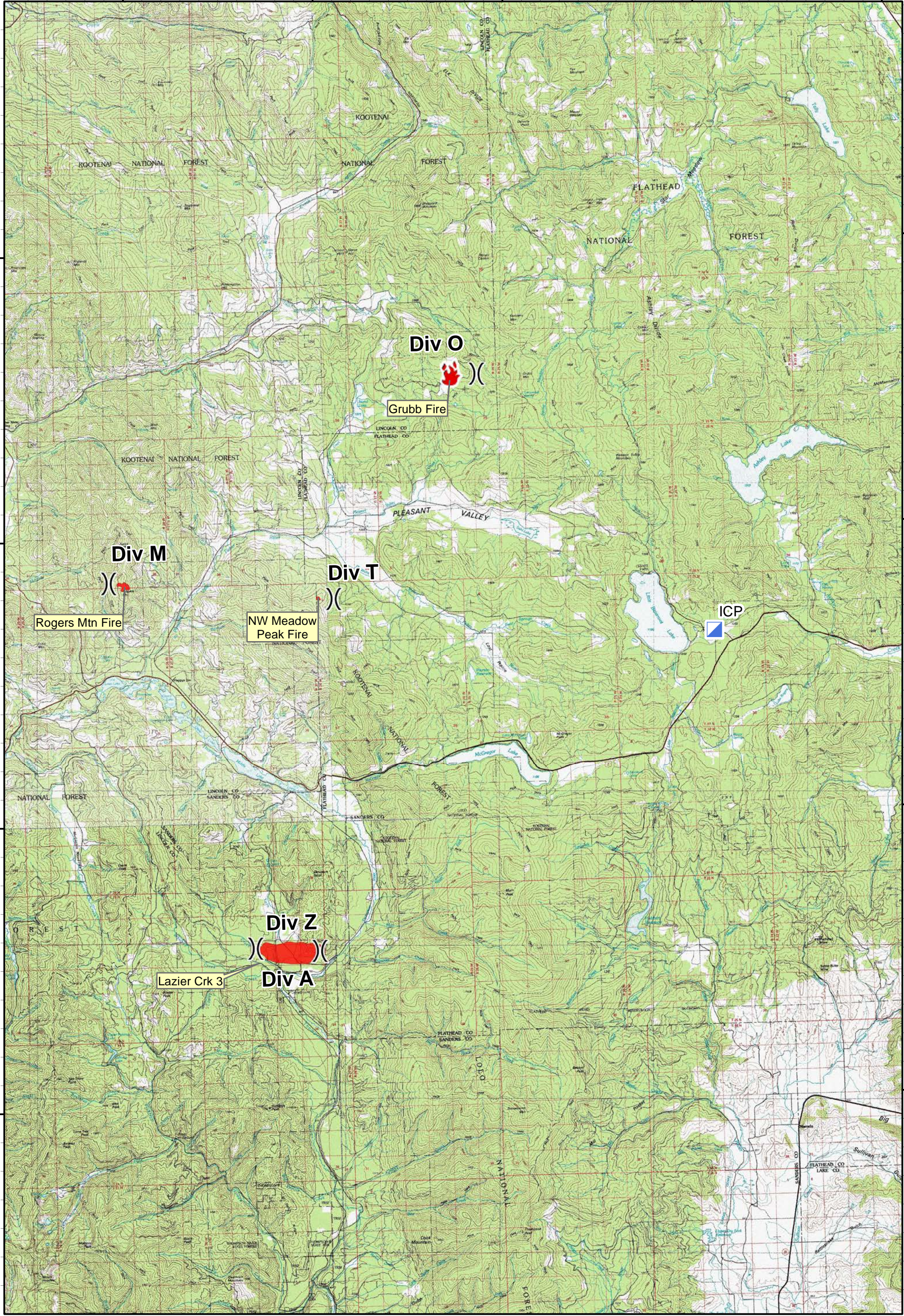
48°10'0"N

48°0'0"N

48°0'0"N

47°50'0"N

47°50'0"N



**Rogers Mountain Fire - Air Operations Map**

0 2 4 Miles



**MT DNRC**  
**7/11/2017**  
**Approx. Acres**  
**Lazier 1,150, Rogers Mtn 69, NW Meadow Pk 12**

-  Incident Command Post
-  Fire Location
-  Division Break
-  Fire Perimeter

