

115°10'0"W

115°0'0"W

114°50'0"W

114°40'0"W

114°30'0"W

48°20'0"N

48°20'0"N

48°10'0"N

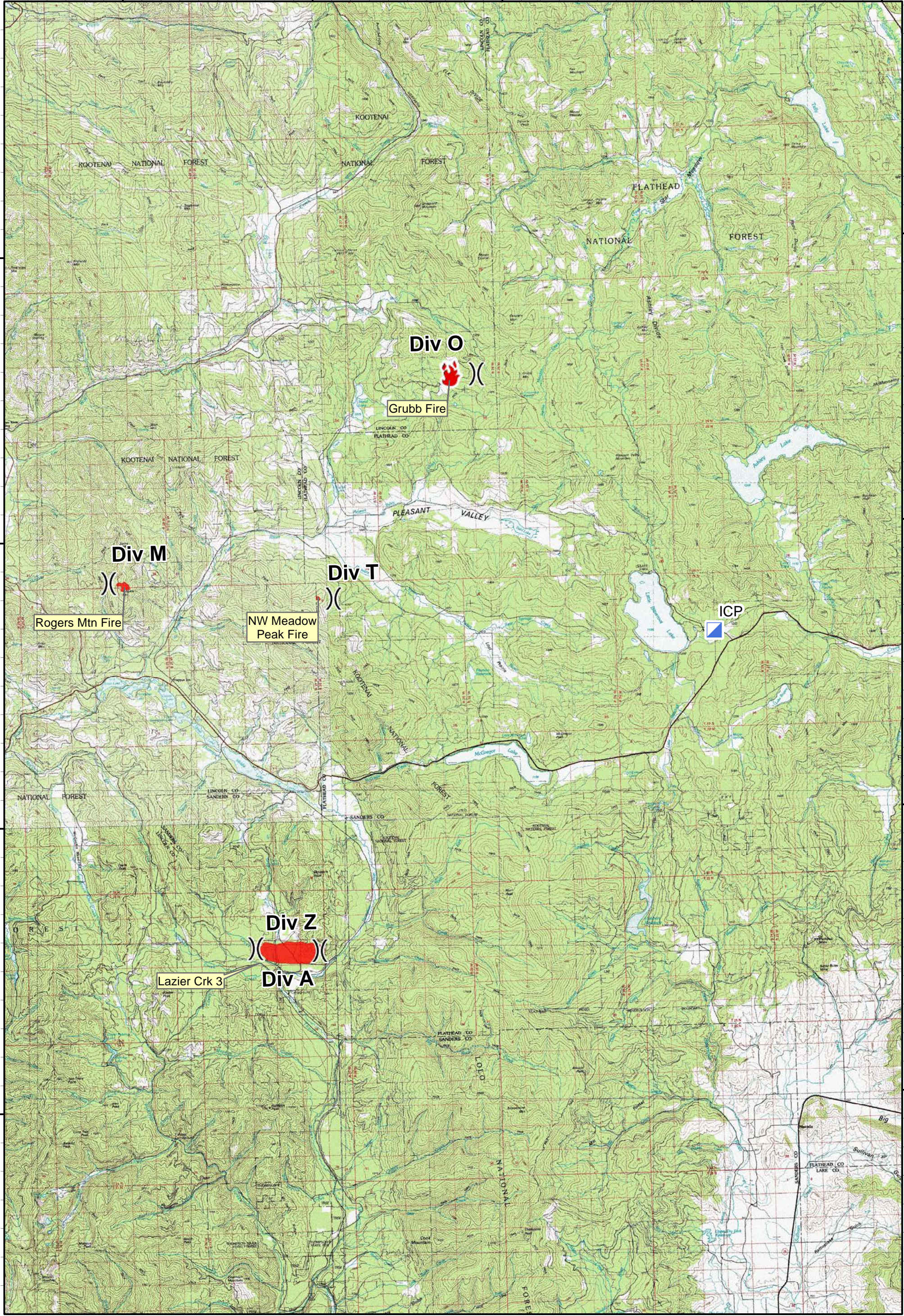
48°10'0"N

48°0'0"N

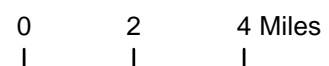
48°0'0"N

47°50'0"N





47°50'0"N



Rogers Mountain Fire - Air Operations Map



MT DNRC
7/11/2017
Approx. Acres
Lazier 1,150, Rogers Mtn 69, NW Meadow Pk 12

-  Incident Command Post
-  Fire Location
-  Division Break
-  Fire Perimeter

