

113°50'0"W

113°40'0"W

113°30'0"W

46°40'0"N

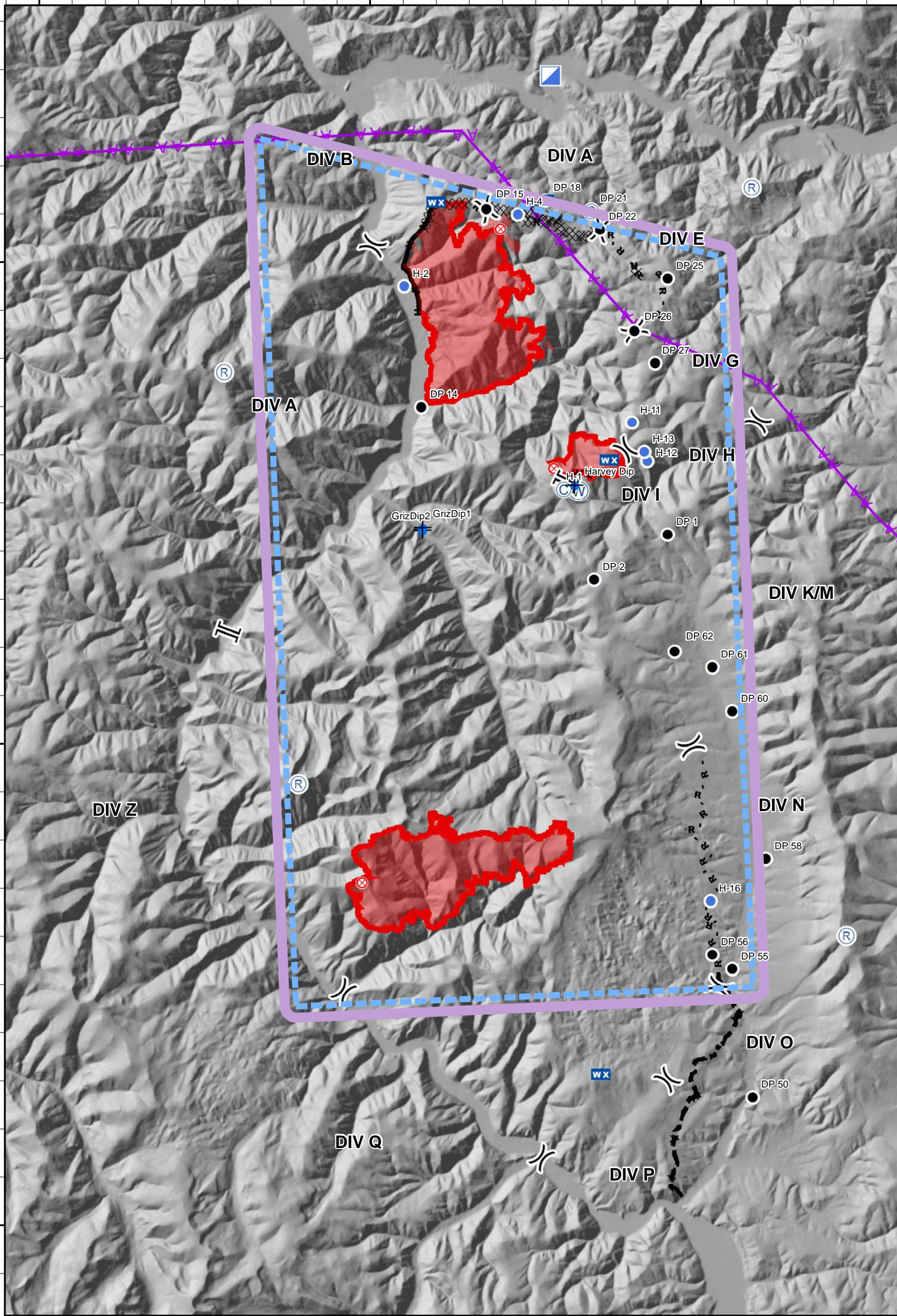
46°40'0"N

46°30'0"N

46°30'0"N

46°20'0"N

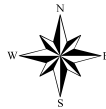
46°20'0"N



### Sapphire Complex - Air Operations Map



**MT-LNF-001463**  
**8/1/2017 0600 Briefing**



0 1 2 Miles

- |  |                |  |                           |  |                               |
|--|----------------|--|---------------------------|--|-------------------------------|
|  | Division Break |  | Drop Point                |  | R - R Road as Completed Line  |
|  | Branch Break   |  | Fire Origin               |  | Completed Dozer Line          |
|  | Repeater       |  | Helispot                  |  | Aerial Hazard                 |
|  | Camp           |  | Incident Command Post     |  | Planned Fire Line             |
|  | Dip Site       |  | Mobile Weather Unit       |  | Completed Line                |
|  |                |  | Water Source              |  | Uncontrolled Fire Edge        |
|  |                |  | H - H Completed Hand Line |  | TFR_20170731                  |
|  |                |  |                           |  | Wildfire Daily Fire Perimeter |