

113°50'0"W

113°40'0"W

113°30'0"W

46°40'0"N

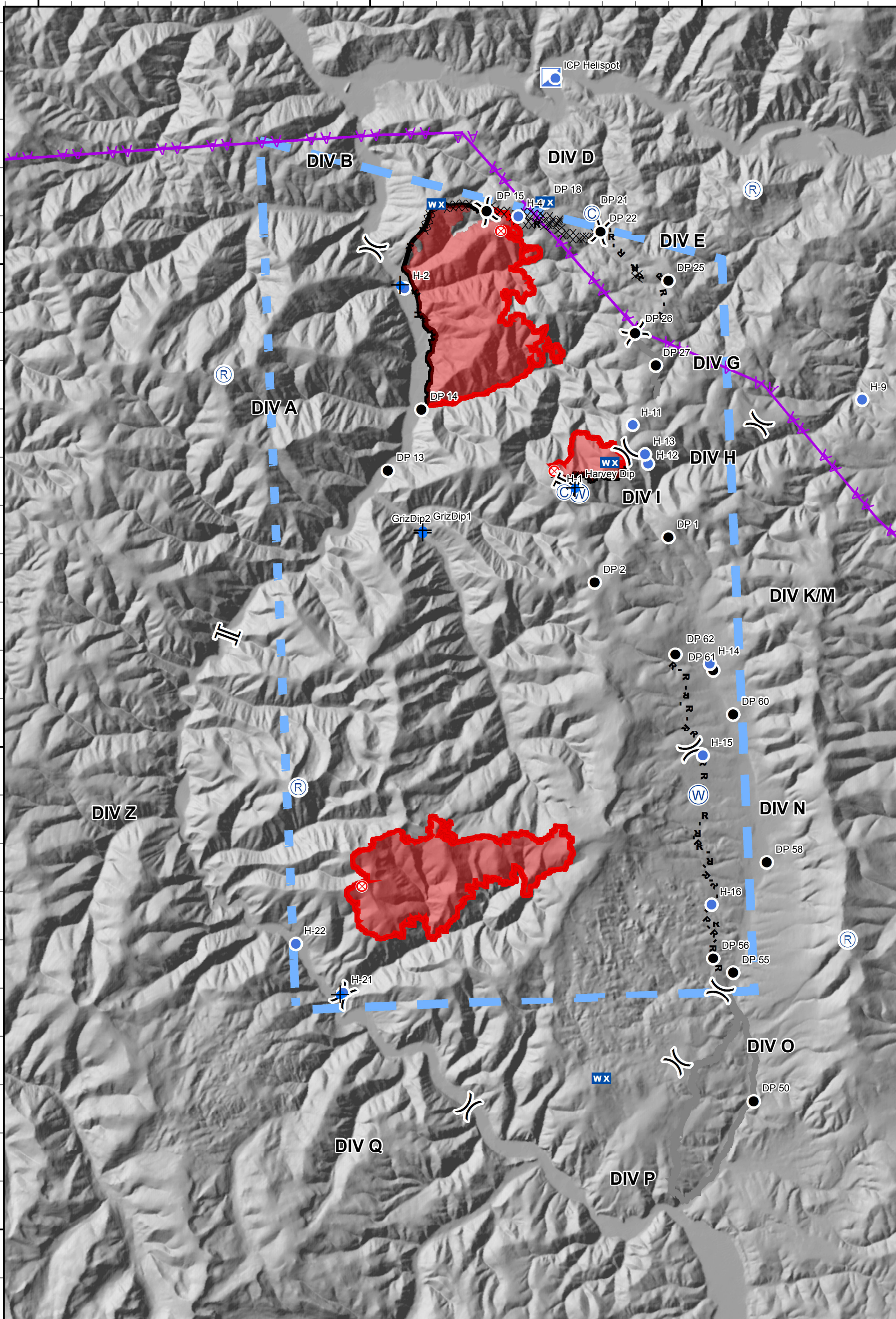
46°40'0"N

46°30'0"N

46°30'0"N

46°20'0"N

46°20'0"N



Sapphire Complex - Air Operations Map

MT-LNF-001463
8/2/2017 0600 Briefing

Approximate Fire Acres 8/1/2017
Goat Creek 6,676 ac
Slide Rock 793 ac
Little Hogback 5,306 ac



- Division Break
- Branch Break
- Repeater
- Camp
- Dip Site
- Drop Point
- Fire Origin
- Helispot
- Incident Command Post
- Mobile Weather Unit
- Water Source
- Completed Hand Line
- Road as Completed Line
- Completed Dozer Line
- Planned Fire Line
- Planned Secondary Line
- Aerial Hazard
- Completed Line
- Uncontrolled Fire Edge
- Temporary Flight Restriction
- Wildfire Daily Fire Perimeter



0 1 2 Miles