

113°50'0"W

113°40'0"W

113°30'0"W

46°40'0"N

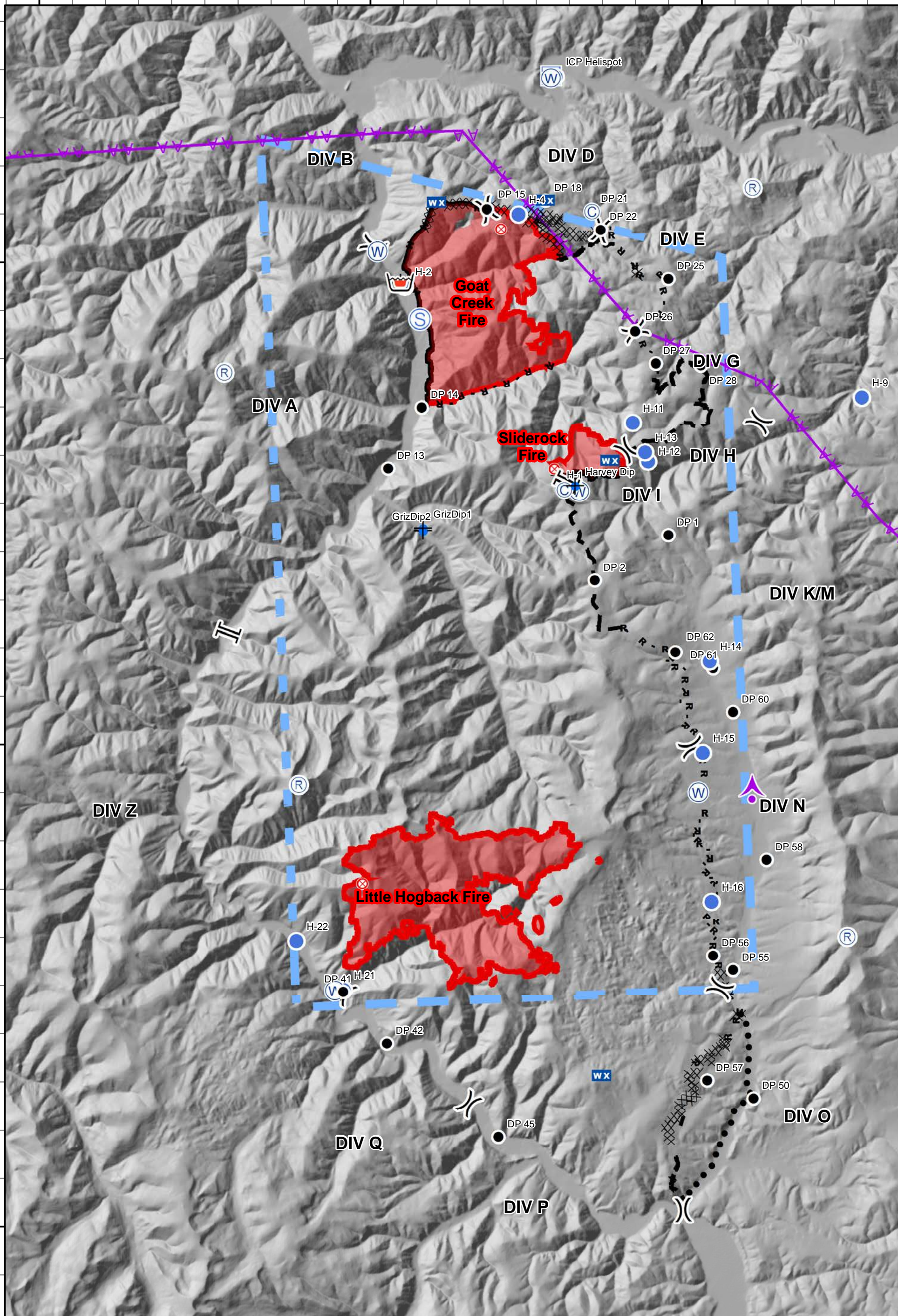
46°40'0"N

46°30'0"N

46°30'0"N

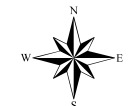
46°20'0"N

46°20'0"N



Sapphire Complex - Air Operations Map

MT-LNF-001463
8/4/2017 0600 Briefing
 Approximate Fire Acres 8/2/2017
 Goat Creek 7,555 ac
 Slide Rock 823 ac
 Little Hogback 7,967 ac
 Complex Total 16,354 ac



- | | | | | |
|----------------|-------------------|-----------------------|------------------------|-------------------------------|
| Division Break | Repeater | Helispot | Completed Hand Line | Temporary Flight Restriction |
| Branch Break | Retardant/Mud Pit | Incident Command Post | Road as Completed Line | Wildfire Daily Fire Perimeter |
| Aerial Hazard | Camp | Mobile Weather Unit | Completed Dozer Line | |
| | Dip Site | Staging Area | Planned Fire Line | |
| | Drop Point | Water Source | Planned Secondary Line | |
| | Fire Origin | | Completed Line | |
| | | | Uncontrolled Fire Edge | |

0 1 2 Miles