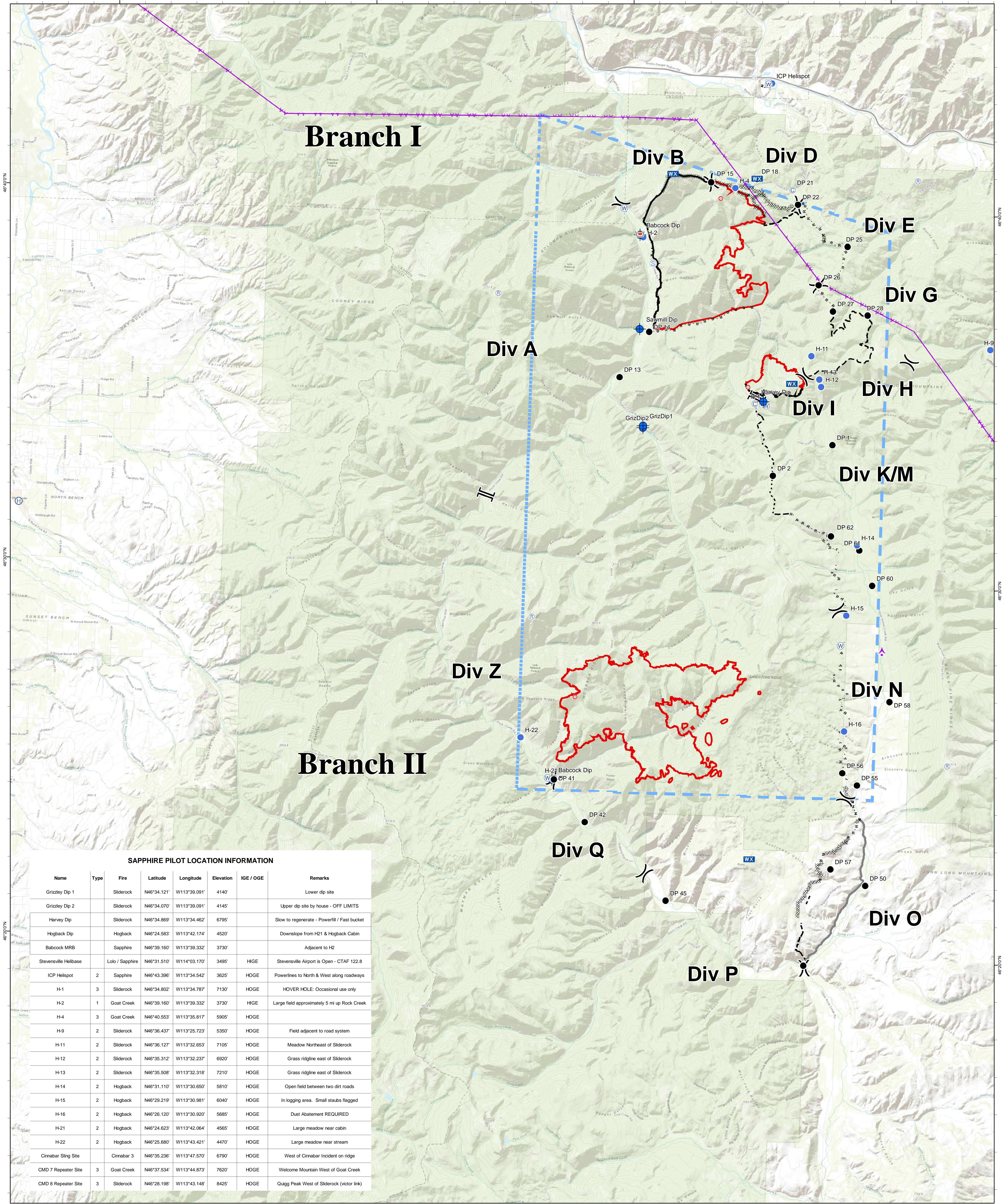


114°00'W

113°50'W

113°40'W

113°30'W



# Branch I

# Branch II

### SAPPHIRE PILOT LOCATION INFORMATION

Name	Type	Fire	Latitude	Longitude	Elevation	IGE / OGE	Remarks
Grizzley Dip 1	Sliderock		N46°34.121'	W113°39.091'	4140'		Lower dip site
Grizzley Dip 2	Sliderock		N46°34.070'	W113°39.091'	4145'		Upper dip site by house - OFF LIMITS
Harvey Dip	Sliderock		N46°34.869'	W113°34.462'	6795'		Slow to regenerate - Powerfill / Fast bucket
Hogback Dip	Hogback		N46°24.583'	W113°42.174'	4520'		Downslope from H21 & Hogback Cabin
Babcock MRB	Sapphire		N46°39.160'	W113°39.332'	3730'		Adjacent to H2
Stevensville Helibase	Lolo / Sapphire		N46°31.510'	W114°03.170'	3495'	HIGE	Stevensville Airport is Open - CTAF 122.8
ICP Helispot	2	Sapphire	N46°43.396'	W113°34.542'	3625'	HOGGE	Powerlines to North & West along roadways
H-1	3	Sliderock	N46°34.802'	W113°34.787'	7130'	HOGGE	HOVER HOLE: Occasional use only
H-2	1	Goat Creek	N46°39.160'	W113°39.332'	3730'	HIGE	Large field approximately 5 mi up Rock Creek
H-4	3	Goat Creek	N46°40.553'	W113°35.817'	5905'	HOGGE	
H-9	2	Sliderock	N46°36.437'	W113°25.723'	5350'	HOGGE	Field adjacent to road system
H-11	2	Sliderock	N46°36.127'	W113°32.653'	7105'	HOGGE	Meadow Northeast of Sliderock
H-12	2	Sliderock	N46°35.312'	W113°32.237'	6920'	HOGGE	Grass ridgeline east of Sliderock
H-13	2	Sliderock	N46°35.508'	W113°32.318'	7210'	HOGGE	Grass ridgeline east of Sliderock
H-14	2	Hogback	N46°31.110'	W113°30.650'	5810'	HOGGE	Open field between two dirt roads
H-15	2	Hogback	N46°29.219'	W113°30.981'	6040'	HOGGE	In logging area. Small stubs flagged
H-16	2	Hogback	N46°26.120'	W113°30.920'	5685'	HOGGE	Dust Abatement REQUIRED
H-21	2	Hogback	N46°24.623'	W113°42.064'	4565'	HOGGE	Large meadow near cabin
H-22	2	Hogback	N46°25.680'	W113°43.421'	4470'	HOGGE	Large meadow near stream
Cinnabar Sling Site	Cinnabar 3		N46°35.236'	W113°47.570'	6790'	HOGGE	West of Cinnabar Incident on ridge
CMD 7 Repeater Site	3	Goat Creek	N46°37.534'	W113°44.873'	7620'	HOGGE	Welcome Mountain West of Goat Creek
CMD 8 Repeater Site	3	Sliderock	N46°28.198'	W113°43.148'	8425'	HOGGE	Quigg Peak West of Sliderock (victor link)

### Sapphire Complex - Air Operations Map

MT-LNF-001463

8/4/2017 0600 Briefing

Approximate Fire Acres 8/3/2017

Goat Creek 7,555 ac

Slide Rock 823 ac

Little Hogback 7,976 ac

Complex Total 16,354



	Division Break		Retardant/Mud Pit		Helispot		R - R - R Road as Completed Line		Completed Line
	Camp		Incident Command Post		Mobile Weather Unit		Completed Dozer Line		Uncontrolled Fire Edge
	Branch Break		Dip Site		Staging Area		Planned Fire Line		Temporary Flight Restriction
	Aerial Hazard		Drop Point		Water Source		Planned Secondary Line		Aerial Hazard
	Repeater		Fire Origin		Completed Hand Line				
	Helibase								

0 1.5 3 Miles

