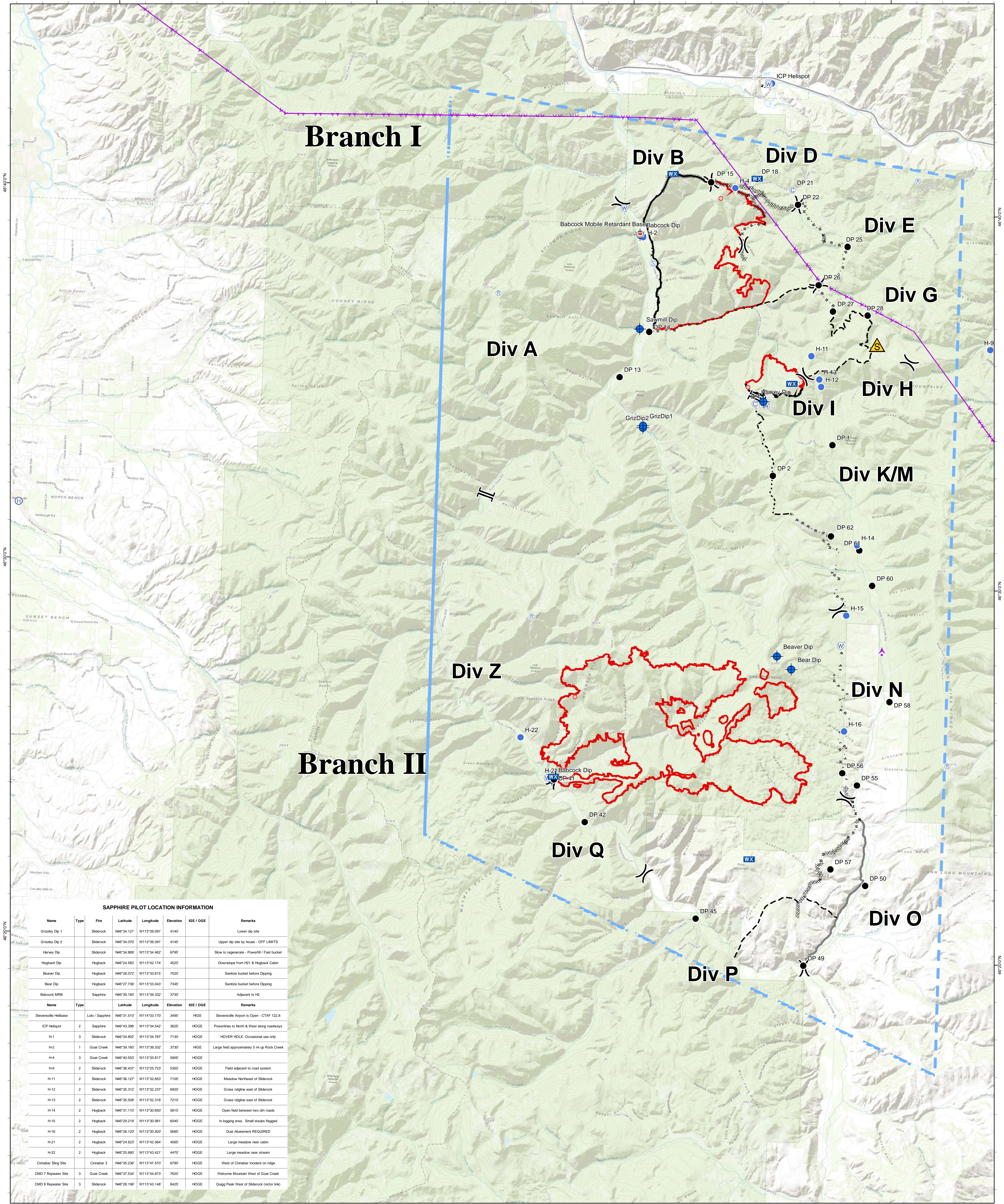


114°00'W

113°50'W

113°40'W

113°30'W



# Branch I

# Branch II

### SAPPHIRE PILOT LOCATION INFORMATION

Name	Type	Fire	Latitude	Longitude	Elevation	IGE / OGE	Remarks
Grizzly Dip 1	Sliderock		N46°34.121'	W113°39.091'	4140		Lower dip site
Grizzly Dip 2	Sliderock		N46°34.070'	W113°39.091'	4145		Upper dip site by house - OFF LIMITS
Harvey Dip	Sliderock		N46°34.869'	W113°34.462'	6795		Slow to regenerate - Powerfil / Fast bucket
Hogback Dip	Hogback		N46°24.583'	W113°42.174'	4520		Downslope from H21 & Hogback Cabin
Beaver Dip	Hogback		N46°28.072'	W113°33.615'	7520		Sanitize bucket before Dipping
Bear Dip	Hogback		N46°27.736'	W113°33.043'	7345		Sanitize bucket before Dipping
Babcock MRB	Sapphire		N46°39.162'	W113°39.332'	3730		Adjacent to H2
Name	Type	Latitude	Longitude	Elevation	IGE / OGE	Remarks	
Stevensville Helibase	Lolo / Sapphire	N46°31.510'	W114°03.170'	3495	HIGE	Stevensville Airport is Open - CTAF 122.8	
ICP Helispot	2	Sapphire	N46°43.396'	W113°34.542'	3625	HOGE	Powerlines to North & West along roadways
H-1	3	Sliderock	N46°34.802'	W113°34.787'	7130	HOGE	HOVER HOLE: Occasional use only
H-2	1	Goat Creek	N46°39.160'	W113°39.332'	3730	HIGE	Large field approximately 5 mi up Rock Creek
H-4	3	Goat Creek	N46°40.553'	W113°35.817'	5905	HOGE	
H-9	2	Sliderock	N46°36.437'	W113°25.723'	5350	HOGE	Field adjacent to road system
H-11	2	Sliderock	N46°36.127'	W113°32.653'	7105	HOGE	Meadow Northeast of Sliderock
H-12	2	Sliderock	N46°36.312'	W113°32.237'	6920	HOGE	Grass ridge east of Sliderock
H-13	2	Sliderock	N46°35.508'	W113°32.318'	7210	HOGE	Grass ridge east of Sliderock
H-14	2	Hogback	N46°31.110'	W113°30.650'	5810	HOGE	Open field between two dirt roads
H-15	2	Hogback	N46°29.219'	W113°30.981'	6040	HOGE	In logging area. Small stubs flagged
H-16	2	Hogback	N46°26.120'	W113°30.500'	5685	HOGE	Dust Abatement REQUIRED
H-21	2	Hogback	N46°24.622'	W113°42.064'	4555	HOGE	Large meadow near cabin
H-22	2	Hogback	N46°25.680'	W113°43.421'	4470	HOGE	Large meadow near stream
Cirrebar Strip Site	3	Cirrebar	N46°35.236'	W113°47.570'	6790	HOGE	West of Cirrebar Incident on ridge
CMO 7 Repeater Site	3	Goat Creek	N46°37.534'	W113°44.873'	7620	HOGE	Welcome Mountain West of Goat Creek
CMO 8 Repeater Site	3	Sliderock	N46°28.198'	W113°43.148'	8425	HOGE	Quigg Peak West of Sliderock (vector link)

### Sapphire Complex - Air Operations Map

MT-LNF-001463  
 8/6/2017 0600 Briefing  
 Approximate Fire Acres 8/5/2017  
 Goat Creek 7,634 ac  
 Slide Rock 828 ac  
 Little Hogback 13,111 ac  
 Complex Total 21,573



**Legend:**

- Safety Zone
- Division Break
- Branch Break
- Aerial Hazard
- Repeater
- Retardant/Mud Pit
- Camp
- Dip Site
- Drop Point
- Fire Origin
- Helibase
- Helispot
- Incident Command Post
- Mobile Weather Unit
- Staging Area
- Water Source
- Completed Dozer Line
- Planned Fire Line
- Planned Secondary Line
- Aerial Hazard
- Completed Hand Line
- Completed Line
- Uncontrolled Fire Edge
- Temporary Flight Restriction

Scale: 0 1.5 3 Miles