

113°40'0"W

113°30'0"W

46°40'0"N

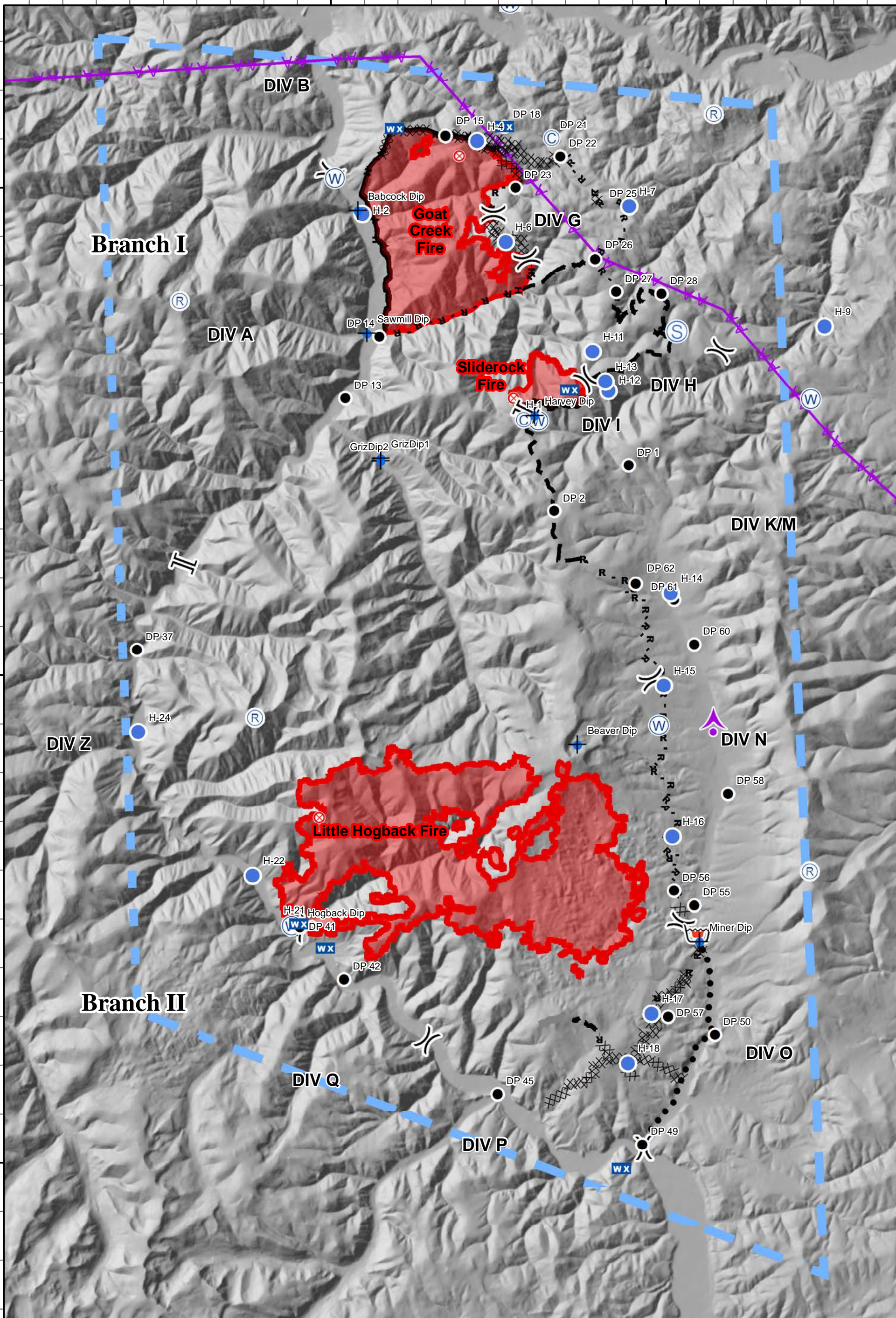
46°40'0"N

46°30'0"N

46°30'0"N

46°20'0"N

46°20'0"N



Sapphire Complex - Air Operations Map

MT-LNF-001463

8/8/2017 0600 Briefing

Approximate Fire Acres 8/7/2017

Goat Creek 7,736 ac

Slide Rock 842 ac

Little Hogback 15,946 ac

Complex Total 24,524 ac



- | | | | | | | | | | |
|-----|----------------|-----|-------------------|----|----------------------|------|------------------------|---|-------------------------------|
|) (| Division Break | (R) | Repeater | ● | Helispot | H - | Completed Hand Line | — | Completed Line |
| | Branch Break | ☪ | Retardant/Mud Pit | ■ | Incident Command Pos | R - | Road as Completed Line | — | Uncontrolled Fire Edge |
| ⊕ | Aerial Hazard | ⊙ | Camp | WX | Mobile Weather Unit | XXXX | Completed Dozer Line | — | Temporary Flight Restriction |
| | | + | Dip Site | S | Staging Area | — | Proposed Dozer Line | — | Wildfire Daily Fire Perimeter |
| | | ● | Drop Point | W | Water Source | — | Planned Fire Line | | |
| | | ⊗ | Fire Origin | | | ● | Planned Secondary Line | | |
| | | | | | | AA | Aerial Hazard | | |

0 1 2 Miles