

113°40'0"W

113°30'0"W

46°40'0"N

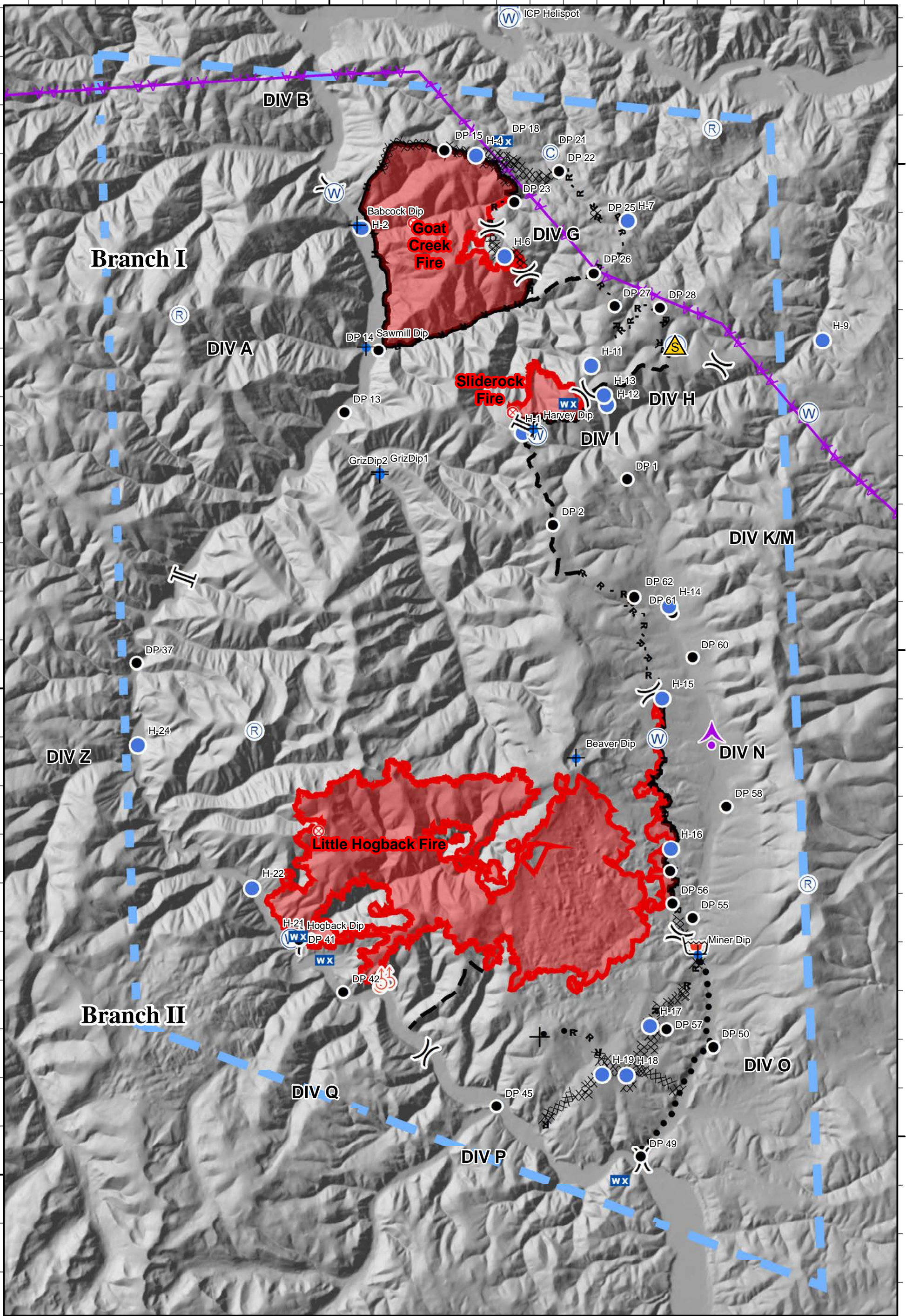
46°40'0"N

46°30'0"N

46°30'0"N

46°20'0"N

46°20'0"N



Sapphire Complex - Air Operations Map

MT-LNF-001463

8/10/2017 0600 Briefing

Approximate Fire Acres 8/9/2017

Goat Creek 8,012 ac

Slide Rock 859 ac

Little Hogback 18,581 ac

Complex Total 27,452 ac



- Safety Zone
- Division Break
- Aerial Hazard
- Camp
- Spot Fire
- Road as Completed Line
- Dip Site
- Incident Command Post
- Proposed Dozer Line
- Drop Point
- Mobile Weather Unit
- Planned Fire Line
- Fire Origin
- Retardant/Mud Pit
- Planned Secondary Line
- Repeater
- Water Source
- Aerial Hazard
- Temporary Flight Restriction
- Completed Hand Line

0 1 2 Miles