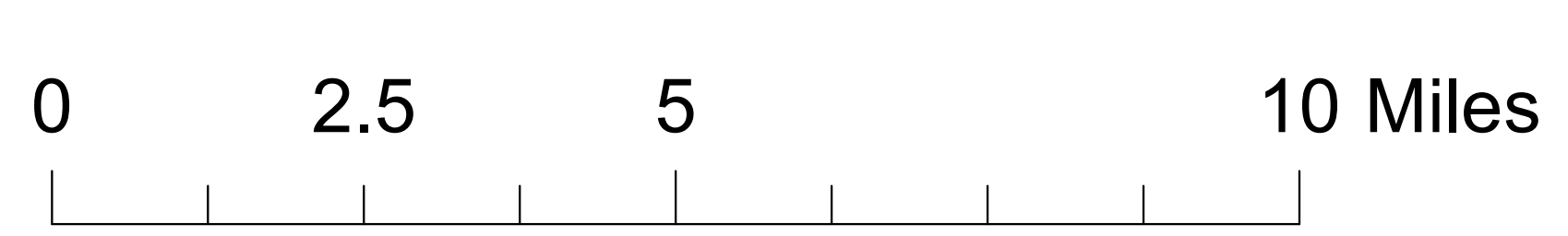
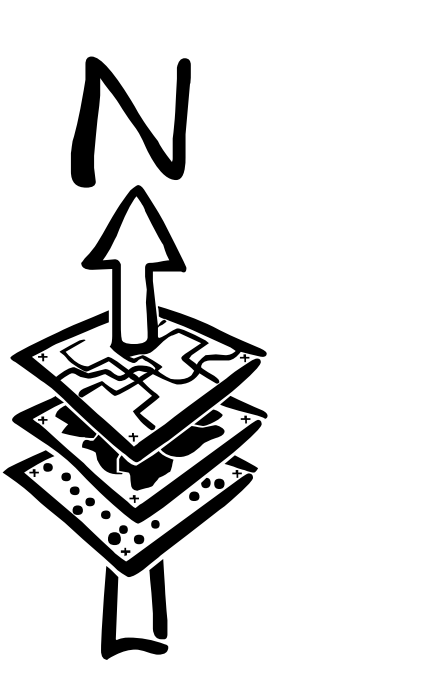
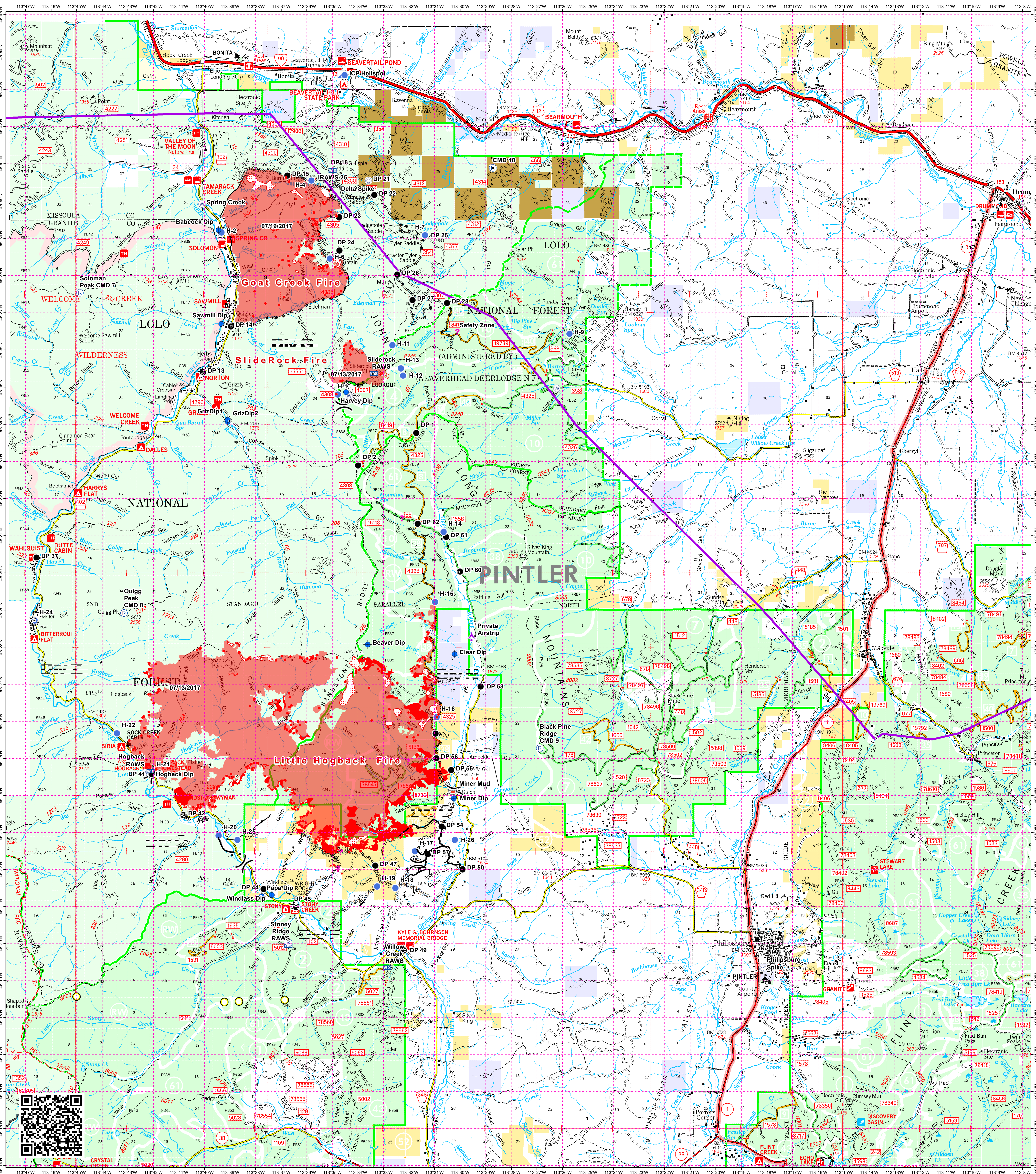


Sapphire Complex Fire Area Map

August 16, 2017



- | | | |
|-------------------|-----------------------|-----------------------------|
| Aerial Hazard | Dip Site | Completed Hand Line |
| Division Break | Drop Point | Proposed Dozer Line |
| Repeater | Helispot | Road as Completed Line |
| Retardant/Mud Pit | Incident Command Post | Line Break Completed |
| Camp | Mobile Weather Unit | Completed Dozer Line |
| | Water Source | Aerial Hazard |
| | Other | Structures (Granite County) |

IR 20170815 2250

- Isolated Heat
- Scattered Heat
- Intense Heat
- Fire Perimeter