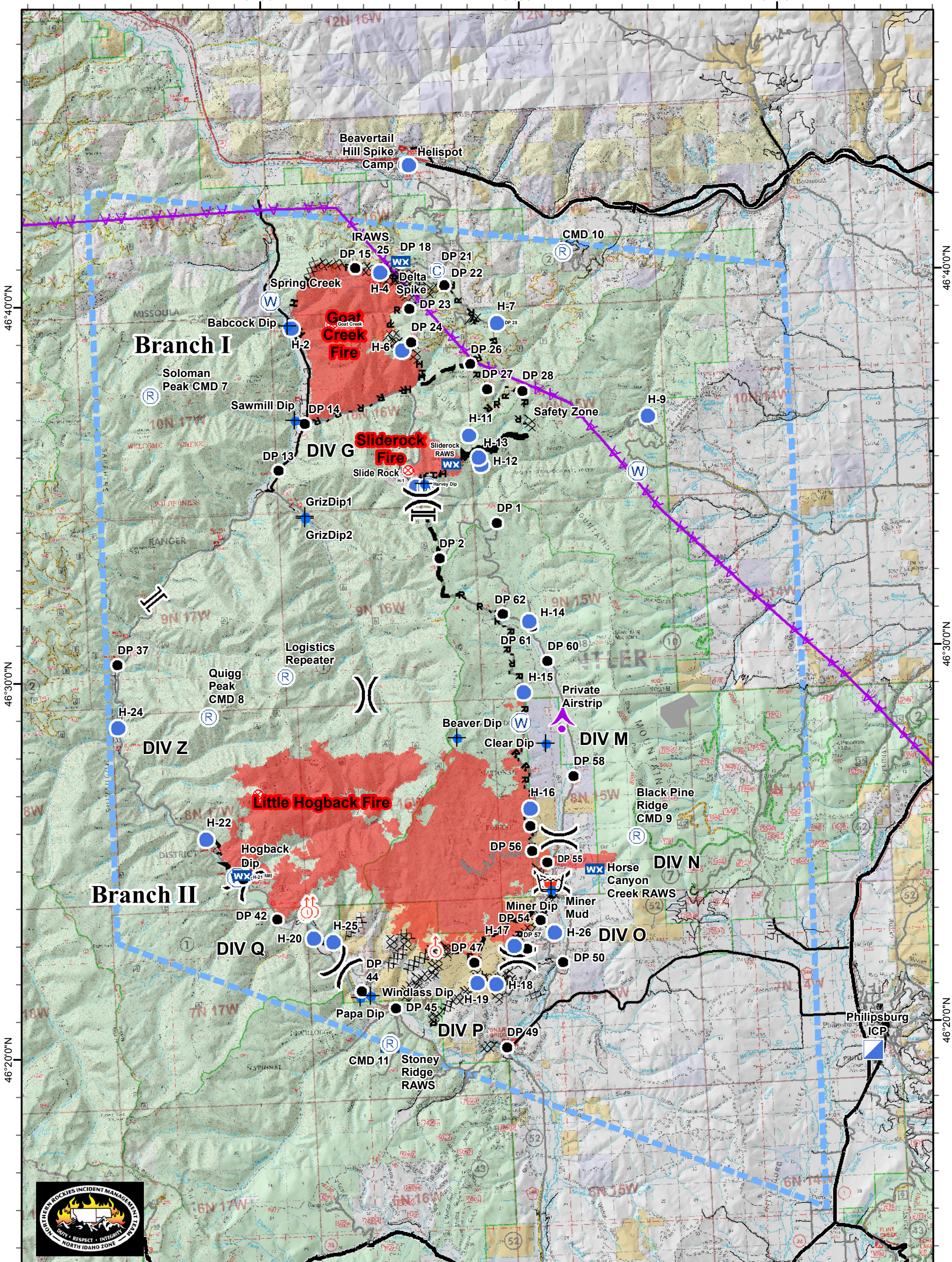


113°40'0"W

113°30'0"W

113°20'0"W



46°40'0"N

46°40'0"N

46°30'0"N

46°30'0"N

46°20'0"N

46°20'0"N

Sapphire Complex Air Operations Map

MT-LNF-001463
8/19/2017

Approximate Fire Acres 8/17/2017

Goat Creek 8,100 ac
Slide Rock 873 ac
Little Hogback 25,788 ac
Complex Total 34,761 ac

- | | | | | | | | |
|--|-------------------|--|-----------------------|--|------------------------------|--|------------------------|
| | Division Break | | Dip Site | | H - H Completed Hand Line | | PUBLIC-HWY |
| | Branch Break | | Drop Point | | Completed Burnout | | PUBLIC ASPHALT |
| | Aerial Hazard | | Fire Origin | | R - R Road as Completed Line | | PUBLIC DIRT or GRAVEL |
| | Repeater | | Helispot | | Line Break Completed | | Access or private Road |
| | Retardant/Mud Pit | | Incident Command Post | | Completed Dozer Line | | Fire Perimeter Aug 18 |
| | Camp | | Mobile Weather Unit | | Proposed Dozer Line | | TFR Aug 17 |
| | | | Spot Fire | | Planned Fire Line | | |
| | | | Water Source | | Aerial Hazard | | |

