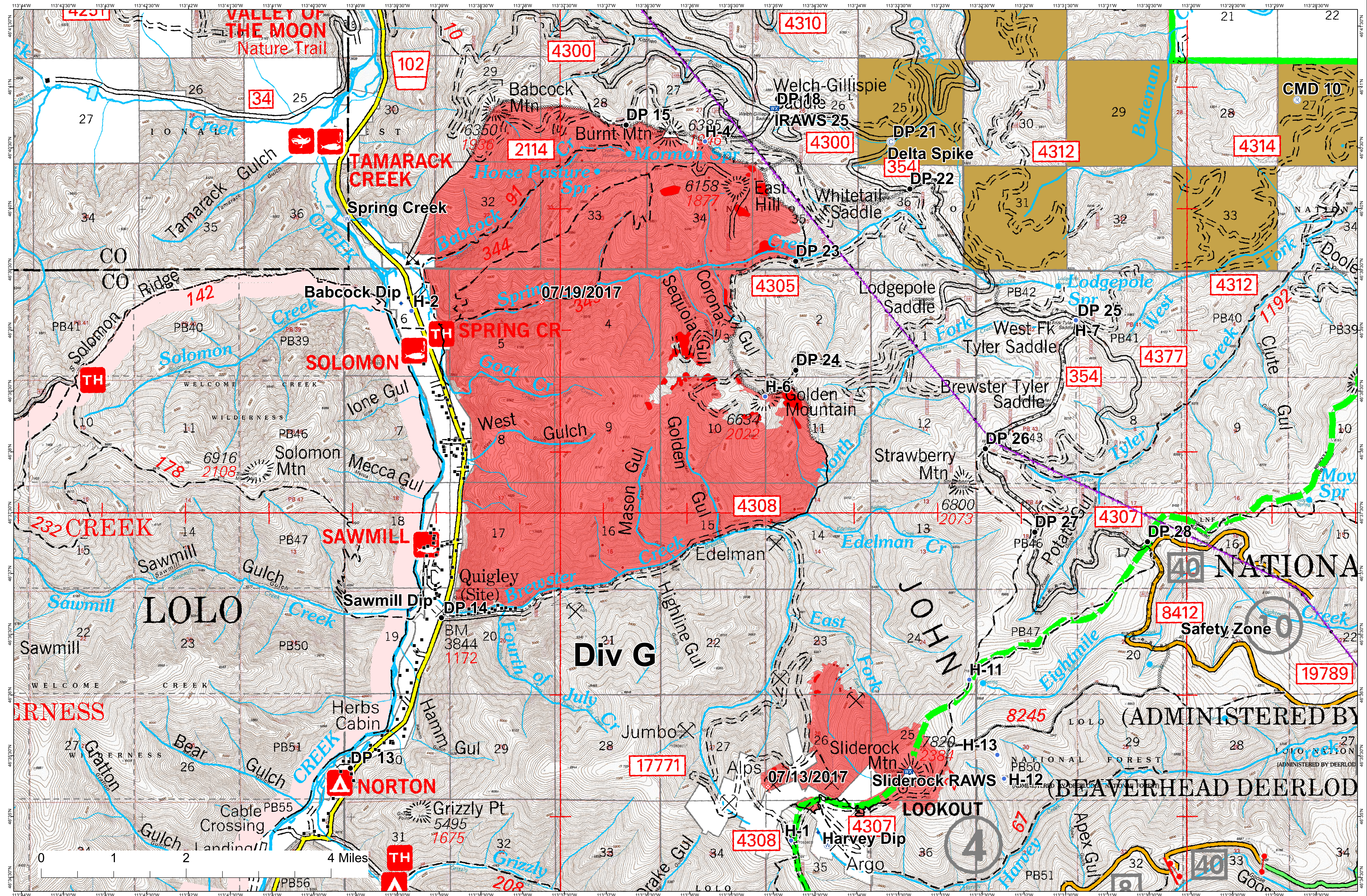


# Goat Creek / Slide Rock OPS MAP



## Legend

Goat Creek / Slick Rock Fires  
 MT-LNF-001463  
 08/18/2017  
 Goat Creek - 8,089 Acres  
 Slick Rock - 873

- |                        |                          |                        |                 |                  |               |                         |                     |
|------------------------|--------------------------|------------------------|-----------------|------------------|---------------|-------------------------|---------------------|
| ■ Structure            | ⚡ Aerial Hazard          | — Completed Hand Line  | ⚡ Aerial Hazard | Ⓧ Dip Site       | ⦿ Fire Origin | Ⓜ Incident Command Post | Ⓜ Repeater          |
| ■ Fire Perimeter       | Ⓜ Completed Burnout      | Ⓜ Line Break Completed | Ⓜ Branch Break  | Ⓜ Division Break | ⦿ Helibase    | Ⓜ Mobile Weather Unit   | Ⓜ Retardant/Mud Pit |
| Ⓜ Completed Dozer Line | Ⓜ Road as Completed Line | ⦿ Camp                 | ⦿ Drop Point    | ⦿ Helispot       | ⦿ Other       | ⦿ Spot Fire             | ⦿ Water Source      |

