


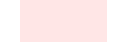
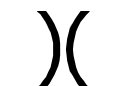















113°40'0"W

113°30'0"W

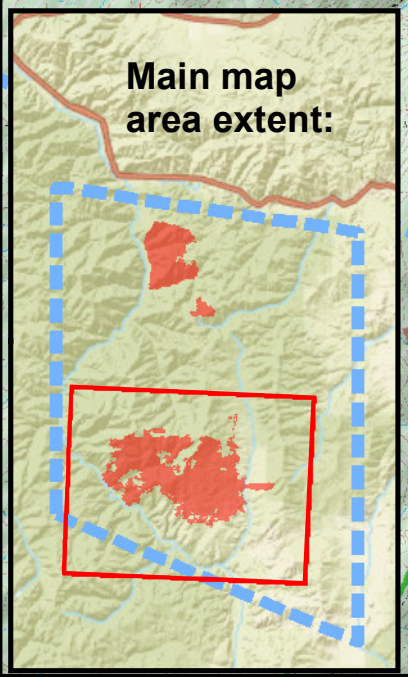
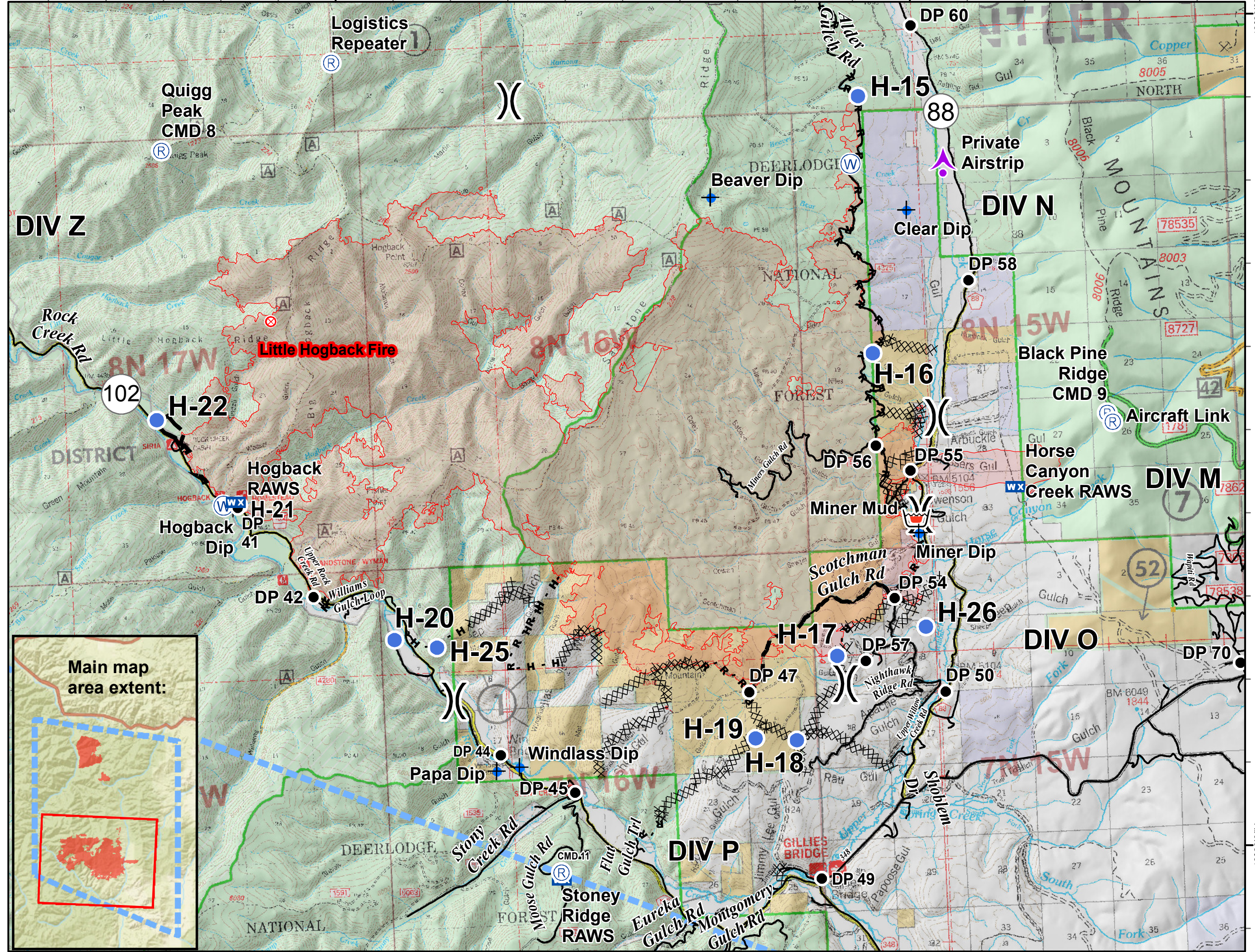
Sapphire Complex Air Operations Map - Branch II

MT-LNF-001463
8/21/2017

Fire Perimeter from
IR 8/19/2017 2228
Approx fire acres:
Little Hogback: 28,891

-  TFR Aug 17
-  Fire Perimeter
-  Division Break
-  Aerial Hazard
-  Repeater
-  Retardant/Mud Pit
-  Dip Site
-  Drop Point
-  Fire Origin
-  Helispot
-  Mobile Weather Unit
-  Water Source
-  H - H - Completed Hand Line
-  - - - Completed Burnout
-  R - R - Road as Completed Line
-  XXXXX Completed Dozer Line
-  - - - Planned Fire Line
-  ——— Roads

0 1 2 Miles



46°30'0"N
46°20'0"N