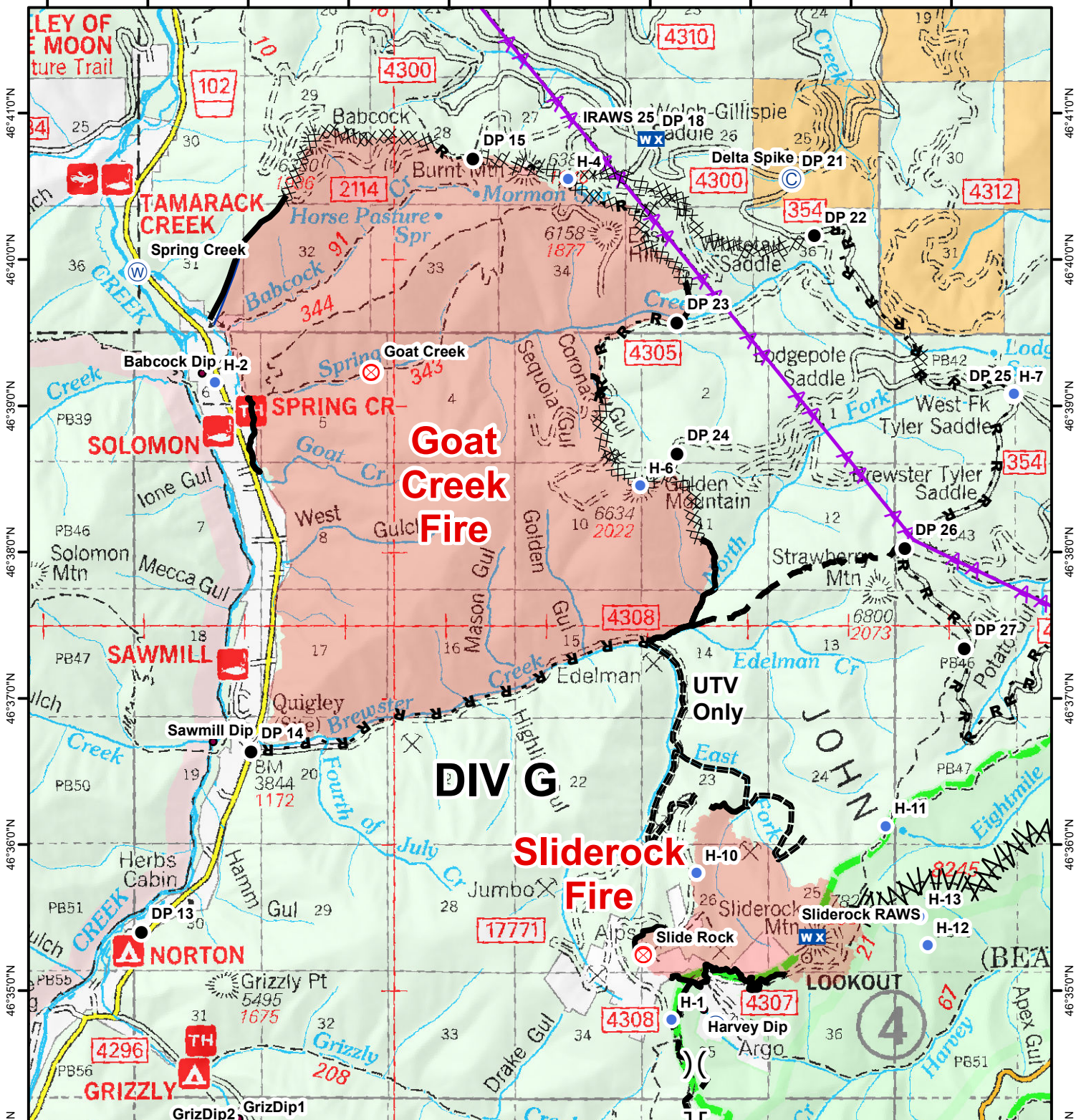


113°41'0"W 113°40'0"W 113°39'0"W 113°38'0"W 113°37'0"W 113°36'0"W 113°35'0"W 113°34'0"W 113°33'0"W 113°32'0"W



IAP MAP

GOAT CREEK FIRE

SLIDEROCK FIRE

MT-LNF-001463
 8/24/2017
 Fire Perimeter from IR 8/23/2017 0214
 Approx Fire Acres
 Goat Creek 8,323
 Sliderock 874



- Aerial Hazard
- Branch Break
- Camp
- Division Break
- Drop Point
- Fire Origin
- Helibase
- Helispot
- Completed Line
- Completed Dozer Line
- Aerial Hazard
- Line Break Completed
- Planned Fire Line
- Road as Completed Line
- Incident Command Post
- Mobile Weather Unit
- Repeater
- Water Source

113°41'0"W 113°40'0"W 113°39'0"W 113°38'0"W 113°37'0"W 113°36'0"W 113°35'0"W 113°34'0"W 113°33'0"W 113°32'0"W

46°41'0"N
46°40'0"N
46°39'0"N
46°38'0"N
46°37'0"N
46°36'0"N
46°35'0"N
46°34'0"N
46°33'0"N

46°41'0"N
46°40'0"N
46°39'0"N
46°38'0"N
46°37'0"N
46°36'0"N
46°35'0"N
46°34'0"N
46°33'0"N