

113°39'W 113°38'W 113°37'W 113°36'W 113°35'W 113°34'W

46°42'N  
46°41'N  
46°40'N  
46°39'N  
46°38'N  
46°37'N  
46°36'N

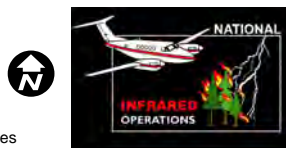
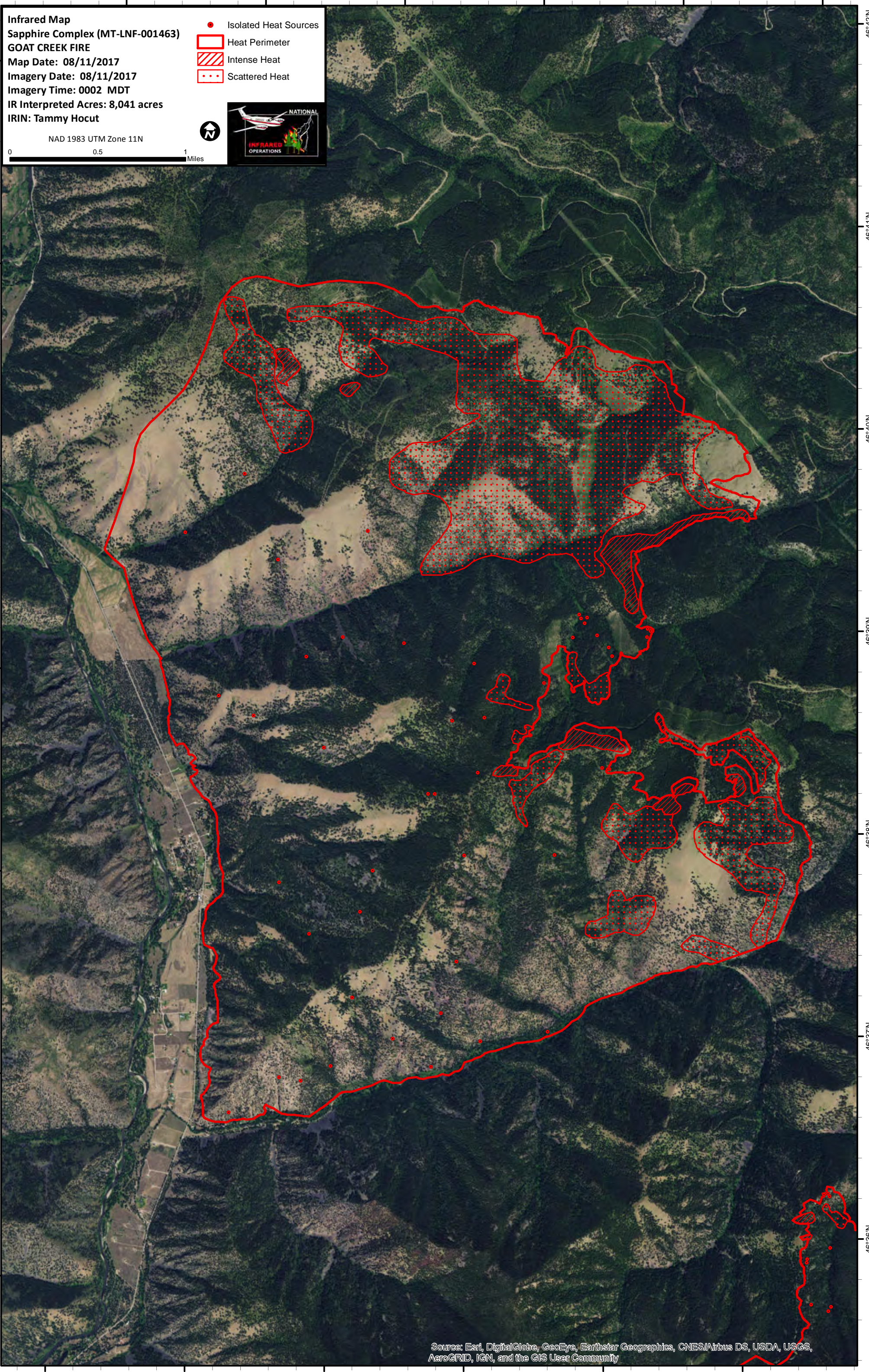
46°42'N  
46°41'N  
46°40'N  
46°39'N  
46°38'N  
46°37'N  
46°36'N

**Infrared Map**  
**Sapphire Complex (MT-LNF-001463)**  
**GOAT CREEK FIRE**  
 Map Date: 08/11/2017  
 Imagery Date: 08/11/2017  
 Imagery Time: 0002 MDT  
 IR Interpreted Acres: 8,041 acres  
 IRIN: Tammy Hocut

- Isolated Heat Sources
- Heat Perimeter
- Intense Heat
- Scattered Heat

NAD 1983 UTM Zone 11N

0 0.5 1 Miles

Source: Esri, DigitalGlobe, GeoEye, Earthstar Geographics, CNES/Airbus DS, USDA, USGS, AeroGRID, IGN, and the GIS User Community

113°40'W 113°39'W 113°38'W 113°37'W 113°36'W 113°35'W