

113°39'W

113°38'W

113°37'W

113°36'W

113°35'W

113°34'W

46°42'N  
46°41'N  
46°40'N  
46°39'N  
46°38'N  
46°37'N  
46°36'N


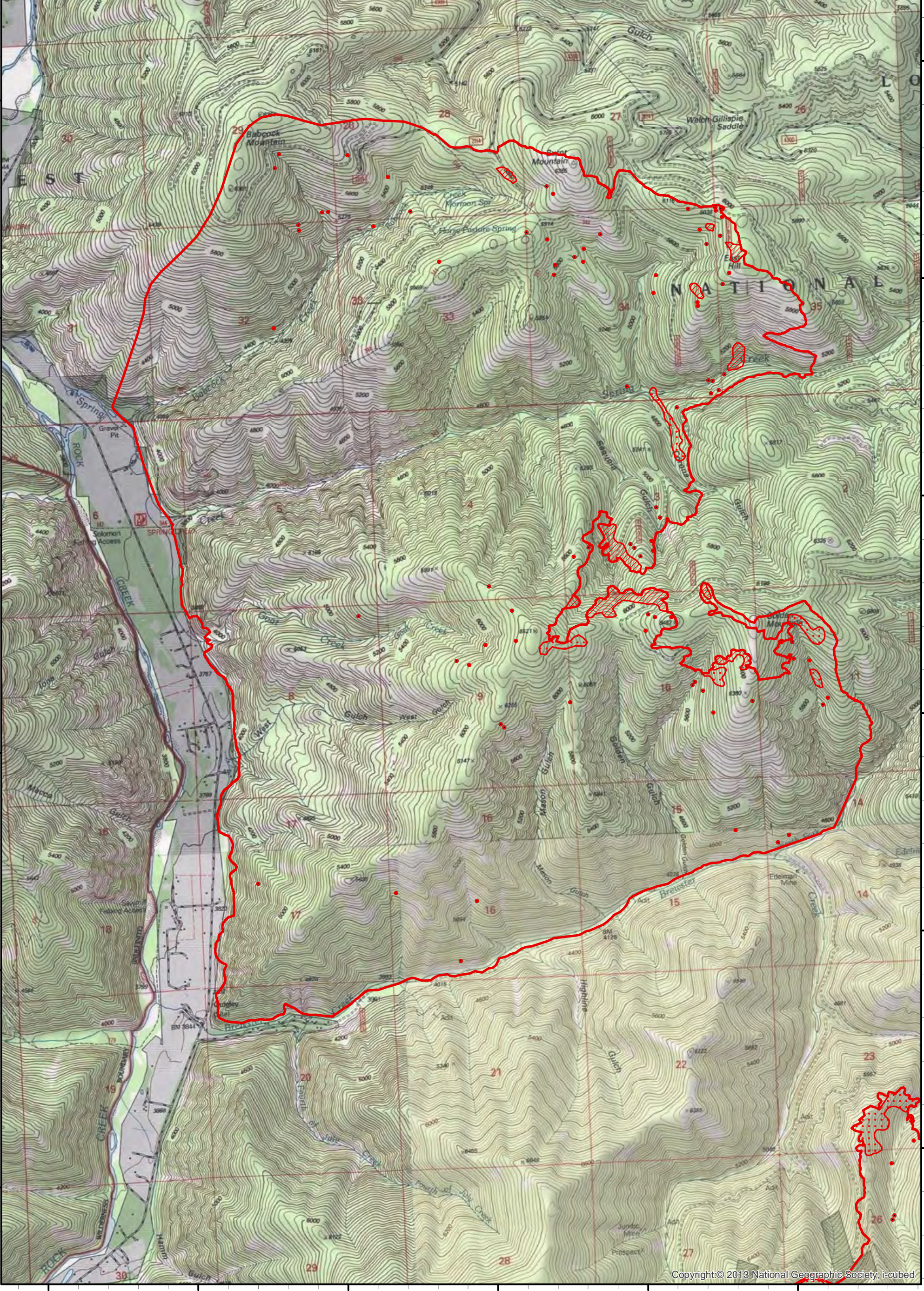
46°42'N  
46°41'N  
46°40'N  
46°39'N  
46°38'N  
46°37'N  
46°36'N

**Infrared Map**  
**Sapphire Complex (MT-LNF-001463)**  
**GOAT CREEK FIRE**  
**Map Date: 08/17/2017**  
**Imagery Date: 08/16/2017**  
**Imagery Time: 2350 MDT**  
**IR Interpreted Acres: 8,090 acres**  
**IRIN: Tammy Hocut**

- Isolated Heat Sources
- Heat Perimeter
- Intense Heat
- Scattered Heat

NAD 1983 UTM Zone 11N

0 0.5 1 Miles

113°40'W

113°39'W

113°38'W

113°37'W

113°36'W

113°35'W