

# SARTIN DRAW

## FIRE

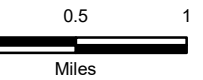
Operational Map

99,419 Acres

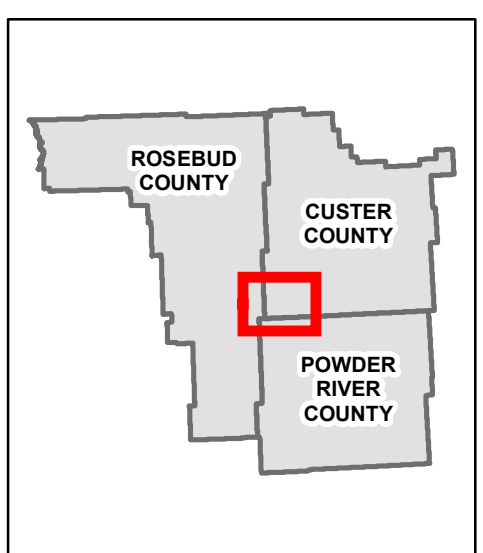
20170904 @ 0700 Hrs



1:55,000



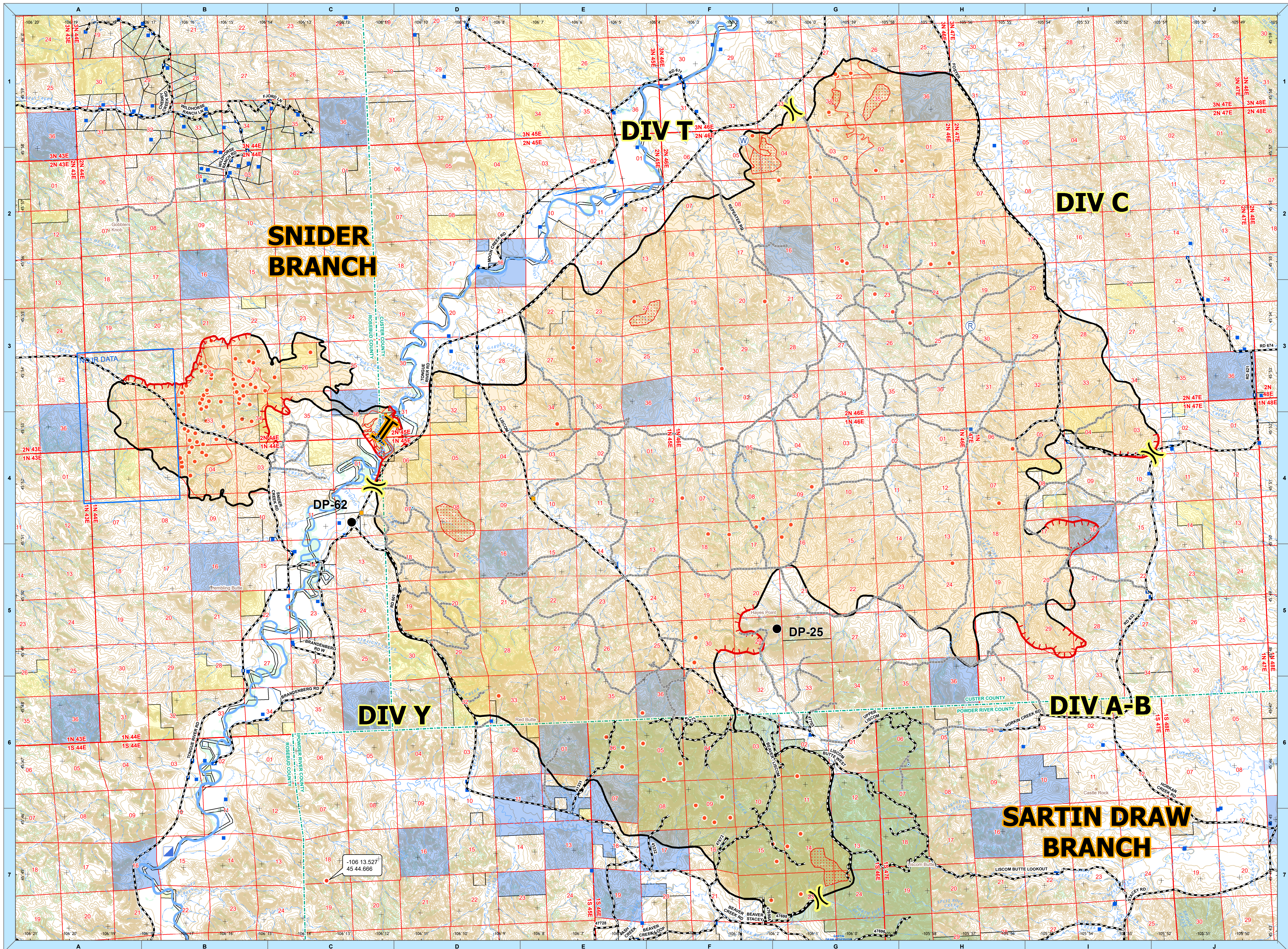
- IR 93 - Isolated Heat
- ▨ IR 93 - Scattered Heat
- ▬ Uncontrolled Fire Edge
- ▬ Completed Line
- Drop Point
- ▣ Incident Command Post
- Ⓡ Repeater
- Ⓢ Water Source
- ⌘ Division
- ⌘ Branch
- ▬ -all other values-
- ▬ Main Public/Private Road
- ▬ Ranch Road
- ▬ State
- ▬ USFS
- ▬ BLM
- ▬ County Boundary
- ▣ Structure
- ▣ Corral
- ⊙ Stock Pond
- ⊙ Stock Tank



Montana State Plane Projection  
Lat/Lon 1 minute grid shown in black



Scan To Download



### SNIDER BRANCH

### DIV T

### DIV C

### DIV Y

### DIV A-B

### SARTIN DRAW BRANCH

DP-62

DP-25

-106 13.527  
45 44.666