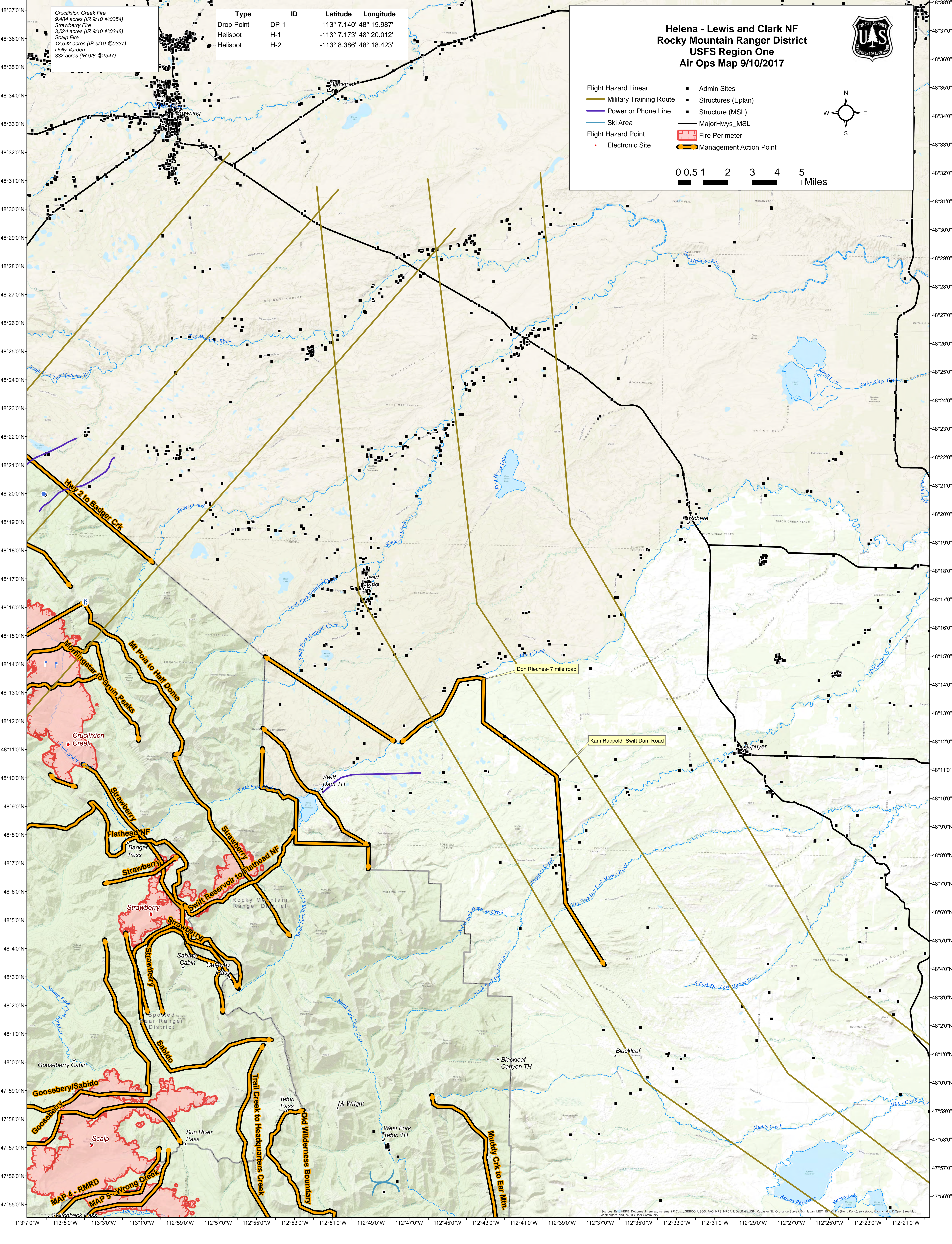


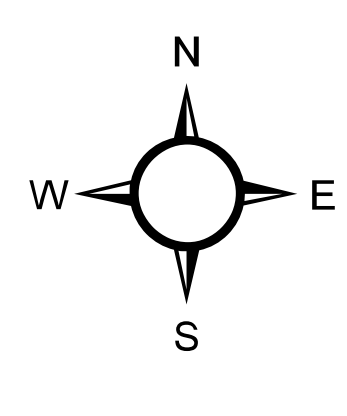
113°7'0"W 113°5'0"W 113°3'0"W 113°1'0"W 112°59'0"W 112°57'0"W 112°55'0"W 112°53'0"W 112°51'0"W 112°49'0"W 112°47'0"W 112°45'0"W 112°43'0"W 112°41'0"W 112°39'0"W 112°37'0"W 112°35'0"W 112°33'0"W 112°31'0"W 112°29'0"W 112°27'0"W 112°25'0"W 112°23'0"W 112°21'0"W



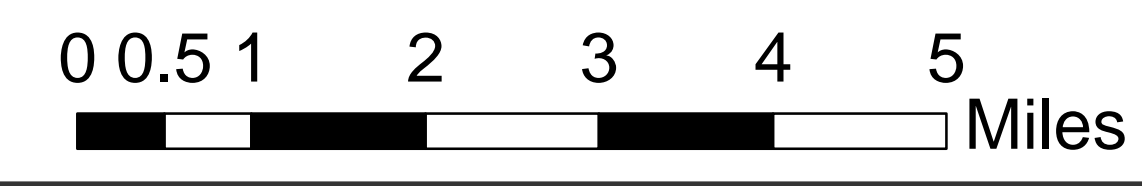
Crucifixion Creek Fire  
9,484 acres (IR 9/10 @0354)  
Strawberry Fire  
3,524 acres (IR 9/10 @0348)  
Scalp Fire  
12,642 acres (IR 9/10 @0337)  
Dolly Varden  
332 acres (IR 9/8 @2347)

Type	ID	Latitude	Longitude
Drop Point	DP-1	-113° 7.140' 48° 19.987'	
Helispot	H-1	-113° 7.173' 48° 20.012'	
Helispot	H-2	-113° 8.386' 48° 18.423'	

**Helena - Lewis and Clark NF  
Rocky Mountain Ranger District  
USFS Region One  
Air Ops Map 9/10/2017**



- Flight Hazard Linear
- Military Training Route
- Power or Phone Line
- Ski Area
- Flight Hazard Point
- Electronic Site
- Admin Sites
- Structures (Eplan)
- Structure (MSL)
- MajorHwys\_MSL
- Fire Perimeter
- Management Action Point



113°7'0"W 113°5'0"W 113°3'0"W 113°1'0"W 112°59'0"W 112°57'0"W 112°55'0"W 112°53'0"W 112°51'0"W 112°49'0"W 112°47'0"W 112°45'0"W 112°43'0"W 112°41'0"W 112°39'0"W 112°37'0"W 112°35'0"W 112°33'0"W 112°31'0"W 112°29'0"W 112°27'0"W 112°25'0"W 112°23'0"W 112°21'0"W