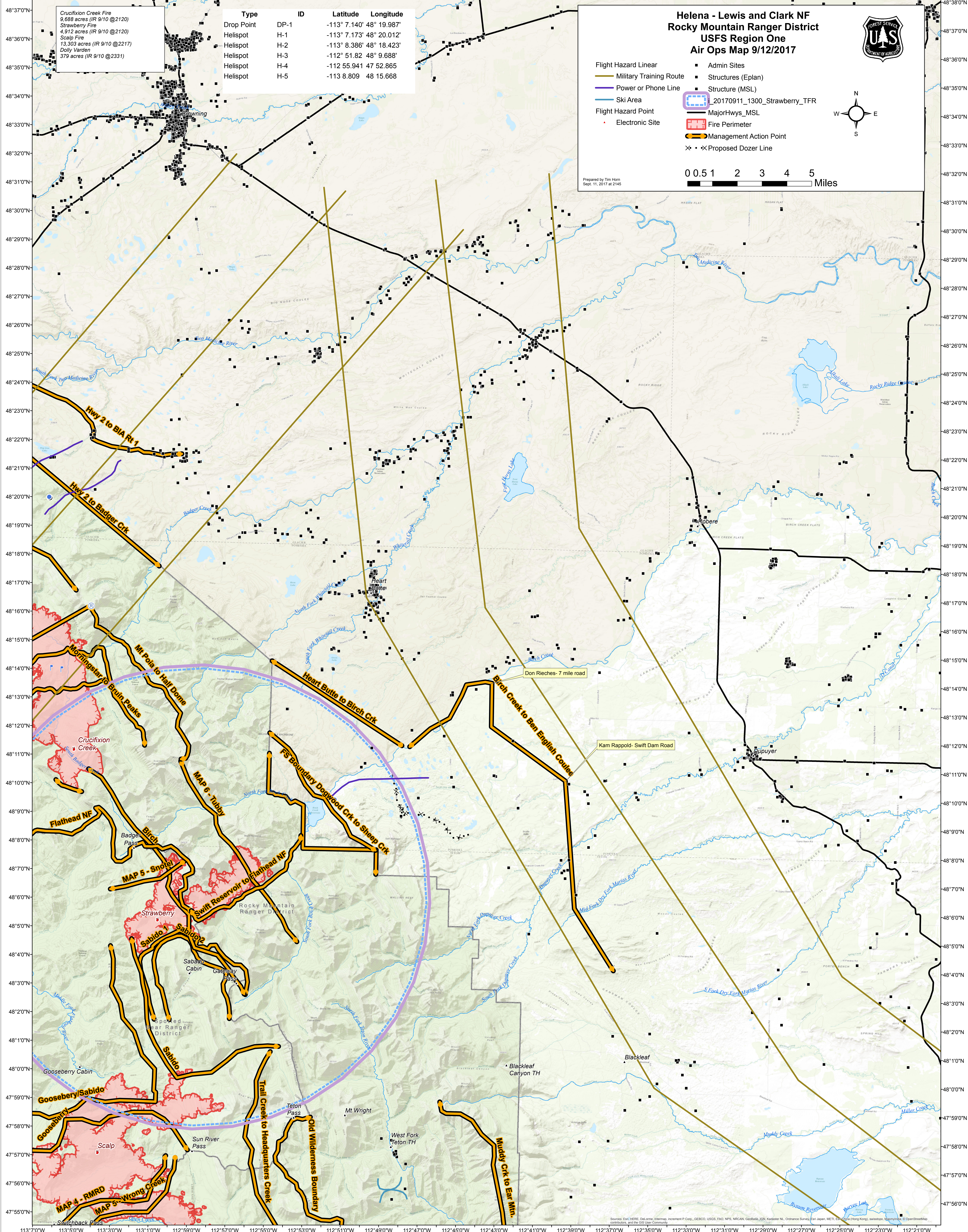


113°7'0"W 113°5'0"W 113°3'0"W 113°1'0"W 112°59'0"W 112°57'0"W 112°55'0"W 112°53'0"W 112°51'0"W 112°49'0"W 112°47'0"W 112°45'0"W 112°43'0"W 112°41'0"W 112°39'0"W 112°37'0"W 112°35'0"W 112°33'0"W 112°31'0"W 112°29'0"W 112°27'0"W 112°25'0"W 112°23'0"W 112°21'0"W



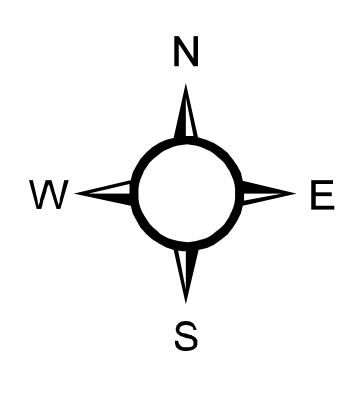
Crucifixion Creek Fire
9,688 acres (IR 9/10 @2120)
Strawberry Fire
4,912 acres (IR 9/10 @2120)
Scalp Fire
13,303 acres (IR 9/10 @2217)
Dolly Varden
379 acres (IR 9/10 @2331)

Type	ID	Latitude	Longitude
Drop Point	DP-1	-113° 7.140' 48° 19.987'	
Helispot	H-1	-113° 7.173' 48° 20.012'	
Helispot	H-2	-113° 8.386' 48° 18.423'	
Helispot	H-3	-112° 51.82 48° 9.688'	
Helispot	H-4	-112.55.941 47 52.865'	
Helispot	H-5	-113 8.809 48 15.668'	

Helena - Lewis and Clark NF Rocky Mountain Ranger District USFS Region One Air Ops Map 9/12/2017



- Flight Hazard Linear
- Military Training Route
- Power or Phone Line
- Ski Area
- Flight Hazard Point
- Electronic Site
- Admin Sites
- Structures (Eplan)
- Structure (MSL)
- 20170911_1300_Strawberry_TFR
- MajorHwys_MSL
- Fire Perimeter
- Management Action Point
- Proposed Dozer Line



0 0.5 1 2 3 4 5 Miles

Prepared by Tim Horn
Sept. 11, 2017 at 2145

113°7'0"W 113°5'0"W 113°3'0"W 113°1'0"W 112°59'0"W 112°57'0"W 112°55'0"W 112°53'0"W 112°51'0"W 112°49'0"W 112°47'0"W 112°45'0"W 112°43'0"W 112°41'0"W 112°39'0"W 112°37'0"W 112°35'0"W 112°33'0"W 112°31'0"W 112°29'0"W 112°27'0"W 112°25'0"W 112°23'0"W 112°21'0"W