

113°7'0"W 113°5'0"W 113°3'0"W 113°1'0"W 112°59'0"W 112°57'0"W 112°55'0"W 112°53'0"W 112°51'0"W 112°49'0"W 112°47'0"W 112°45'0"W 112°43'0"W 112°41'0"W 112°39'0"W 112°37'0"W 112°35'0"W 112°33'0"W 112°31'0"W 112°29'0"W 112°27'0"W 112°25'0"W 112°23'0"W 112°21'0"W

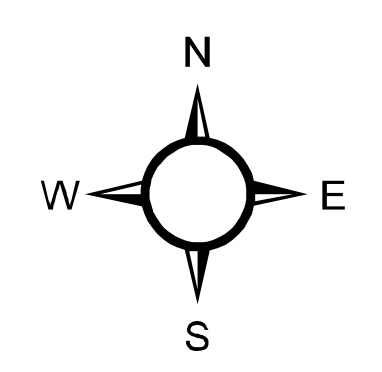
Type	ID	Latitude
Drop Point	DP-1	-113° 7.140'
Helispot	H-1	-113° 7.173'
Helispot	H-2	-113° 8.386'
Helispot	H-3	-112° 51.826'
Helispot	H-4	-112 55.941
Helispot	H-5	-113 8.809
Drop Point	DP-2	-112° 48.480'

Crucifixion Creek Fire  
10,080 acres (IR 9/11 @ 2123)  
Strawberry Fire  
11,325 acres (IR 9/11 @ 2123)  
Scalp Fire  
16,958 acres (IR 9/11 @ 2135)  
Dolly Varden  
424 acres (IR 9/11 @ 2215)

### Helena - Lewis and Clark NF Rocky Mountain Ranger District USFS Region One Air Ops Map 9/13/2017

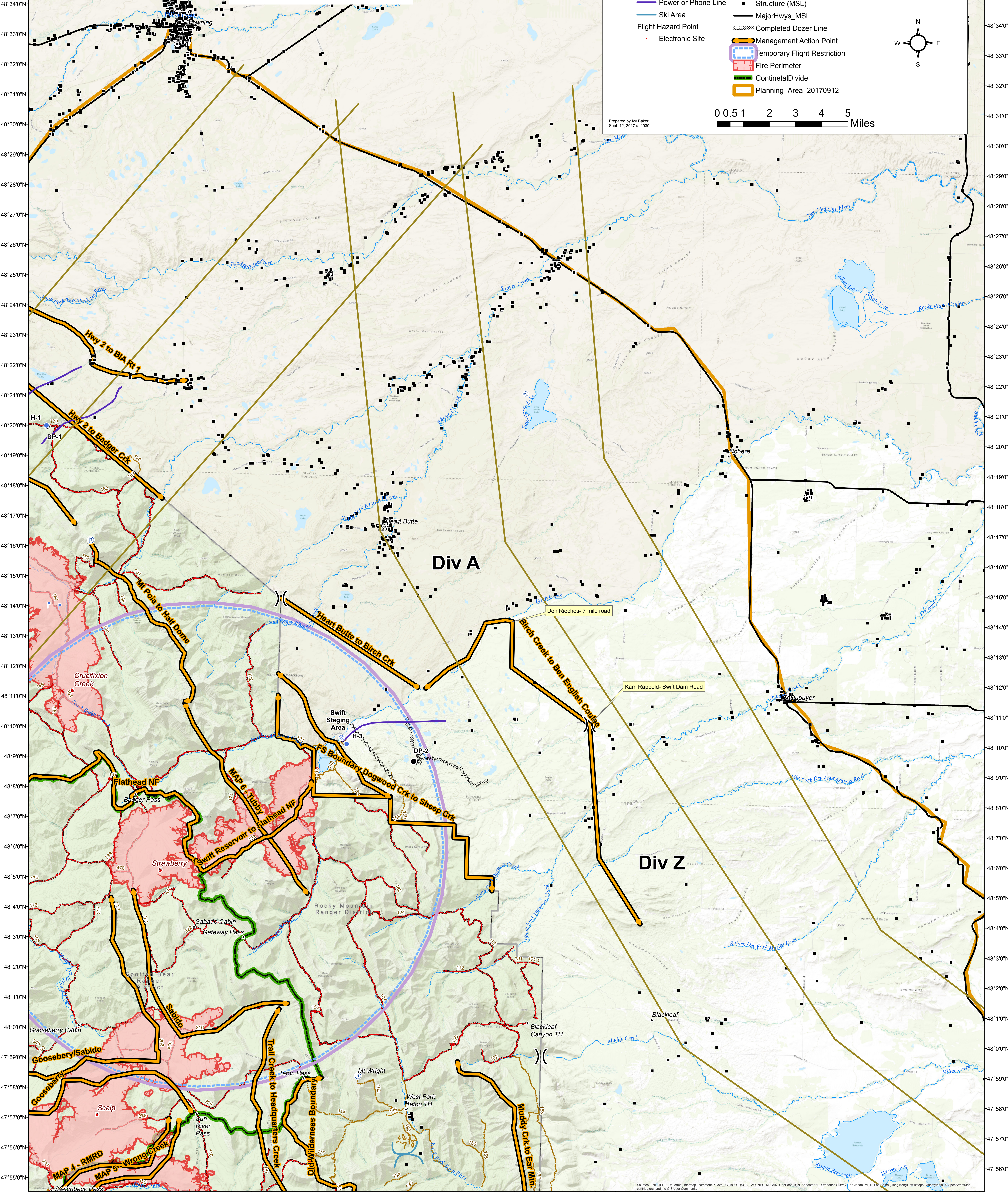


- Flight Hazard Linear
- Military Training Route
- Power or Phone Line
- Ski Area
- Flight Hazard Point
- Electronic Site
- Admin Sites
- Structures (Eplan)
- Structure (MSL)
- MajorHwys\_MSL
- Completed Dozer Line
- Management Action Point
- Temporary Flight Restriction
- Fire Perimeter
- Continental Divide
- Planning Area\_20170912



0 0.5 1 2 3 4 5 Miles

Prepared by Ivy Baker  
Sept. 12, 2017 at 1930



113°7'0"W 113°5'0"W 113°3'0"W 113°1'0"W 112°59'0"W 112°57'0"W 112°55'0"W 112°53'0"W 112°51'0"W 112°49'0"W 112°47'0"W 112°45'0"W 112°43'0"W 112°41'0"W 112°39'0"W 112°37'0"W 112°35'0"W 112°33'0"W 112°31'0"W 112°29'0"W 112°27'0"W 112°25'0"W 112°23'0"W 112°21'0"W

Source: Esri, HERE, DeLorme, Intermap, increment P Corp., GEBCO, USGS, FAO, NPS, NRCAN, GeoBroker, IGN, Kadaster NL, Ordnance Survey, Esri Japan, METI, Esri China (Hong Kong), Swisstopo, Mapbox, OpenStreetMap contributors, and the GIS User Community